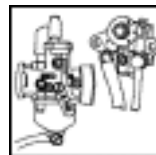


SERVICE INFORMATION



SALES DIVISION
NETWORK TECHNICAL INFORMATION

ALL 50cc SCOOTER TYPES WITH IAE

Subject: I.A.E. SYSTEM

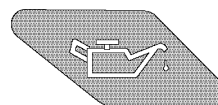
A new **Exhaust Air Injection** system, called I.A.E. (its operation is described in detail in the document "MANUAL and METHOD" no. 26), is mounted on machines in compliance with **Euro 2 standards**. This new system uses an **air pump** mounted on the engine casing and driven by a cam on the crankshaft (replacing the mechanical oil pump). This generates a slight extra noise from the engine. This noise is normal and does not require servicing.

The mechanical oil pump has been replaced by an **electric oil pump** controlled by an **electronic control unit**.

Please note that the Euro 2 emission control requirements may slightly affect engine performance when hot.

Electric oil pump:

The oil pump is controlled by an electronic control unit enabling system diagnostic in case of a failure. The rider is informed of the failure by the oil warning light coming on or flashing.



A label on the RH control cluster reminds the rider that he **must stop** when the warning light comes on

Reminder: when handing over the machine, remind the customer that he **must stop immediately** when the warning light comes on or flashes. As on other machines, this signal may indicate a low oil level; in this case, after checking, the rider may go on for a few more kilometres. However, **the signal may also indicate a pump malfunction**. In this case, **restarting the engine may lead to its destruction**.



Note: when starting IAE machines for the first time, the presence of air bubbles (even large ones) in the hose between the pump and the carburettor does not affect engine lubrication.

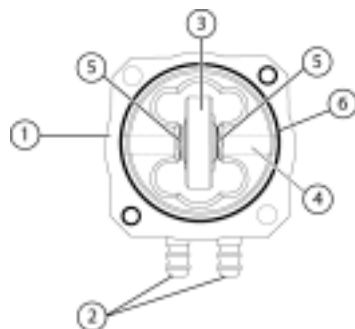
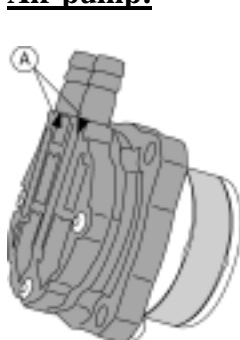
	Dealer	Spare parts	Mechanic 1	Mechanic 2	Mechanic 3
Signature					



SERVICE INFORMATION

SALES DIVISION
NETWORK TECHNICAL INFORMATION

Air pump:



1. pump body
2. air inlet and outlet couplings
3. drive roller
4. roller pin
5. friction washers
6. roller pin retaining clip

The arrows (A) show the fitting direction of the air couplings.

Idle setting:

The air pump is driven by the engine, which may lead to a decrease in idle speed during running-in. **Consequently, the idle speed must be checked and set if necessary when preparing the machine and during first servicing.**

Diagnostic:

If the engine makes an unusual noise, remove the roller in order to determine the origin of the noise. Refit the air pump and carry out a test. If the engine still makes the same noise, the pump is not the cause of the problem, and you should check the engine.

Removal of the drive roller:

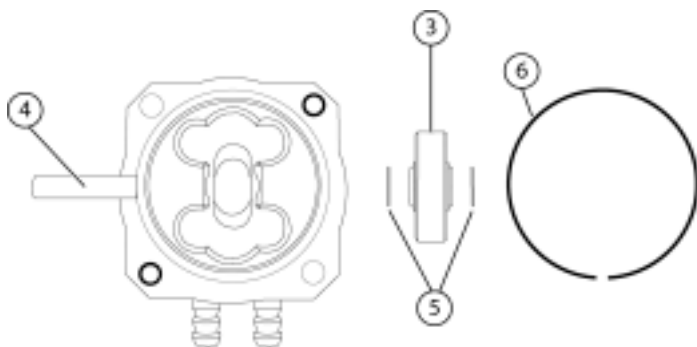
Remove the roller pin retaining clip (6)

Slide the roller pin (4) out of the pump body and piston

Note: The roller pin must not be fully removed, as it maintains the pump piston in its housing.

Remove the roller (3)

Recover the washers (5)



Note: Push the roller pin back into place and refit the retaining clip to prevent the piston from moving.

	Dealer	Spare parts	Mechanic 1	Mechanic 2	Mechanic 3
Signature					