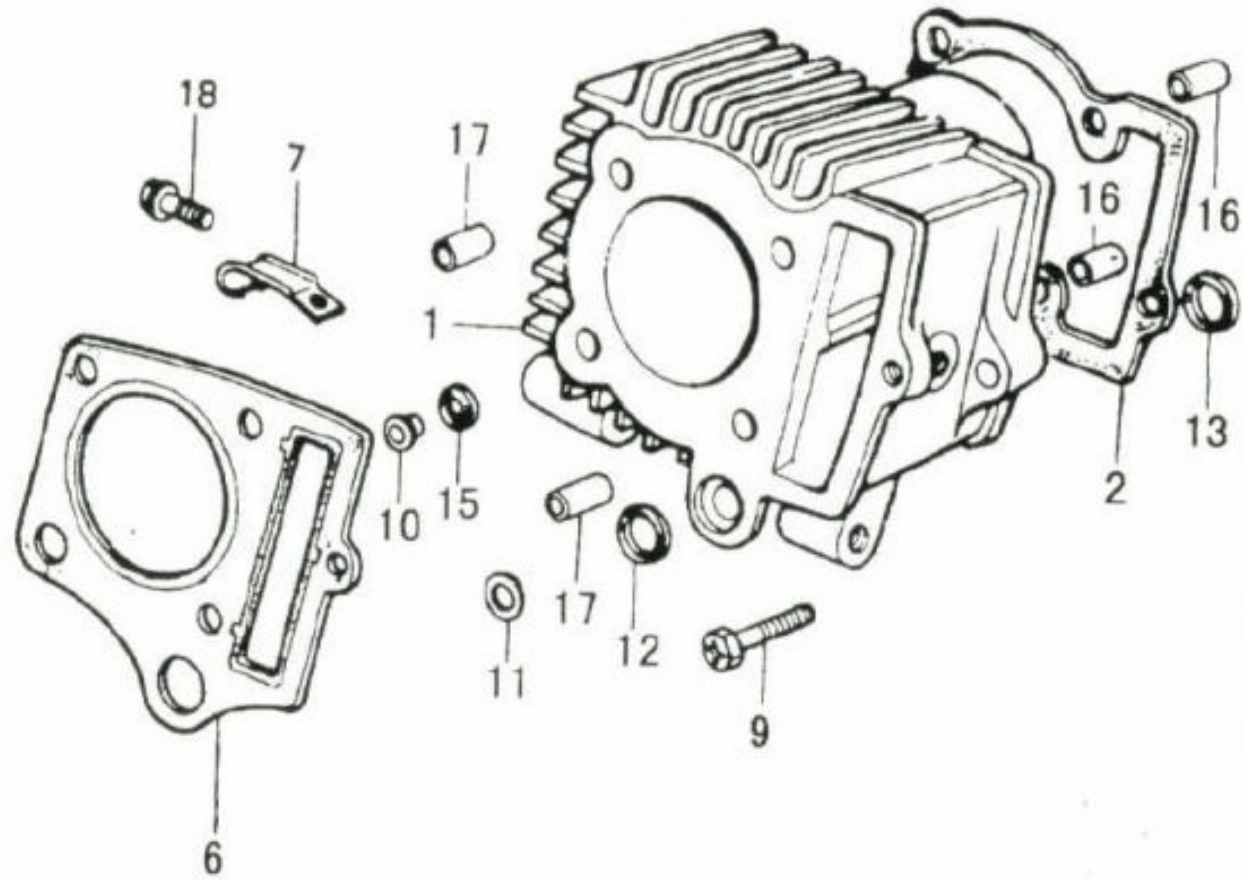
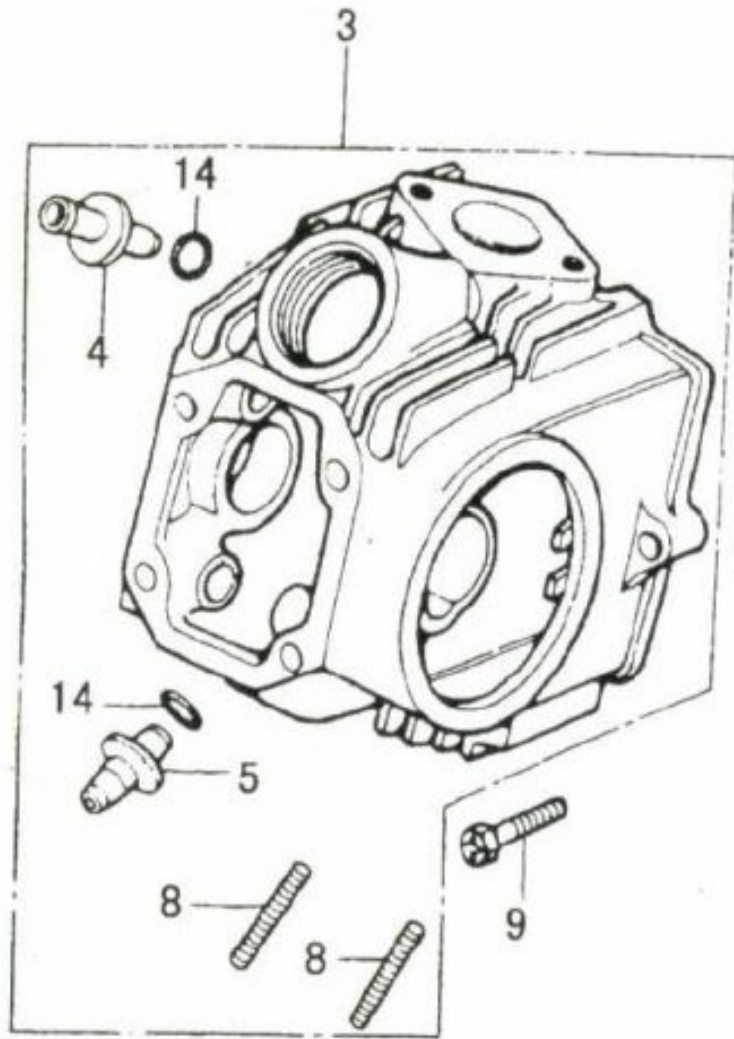


HERO
STALLION
4S

HERO
Panther
4S



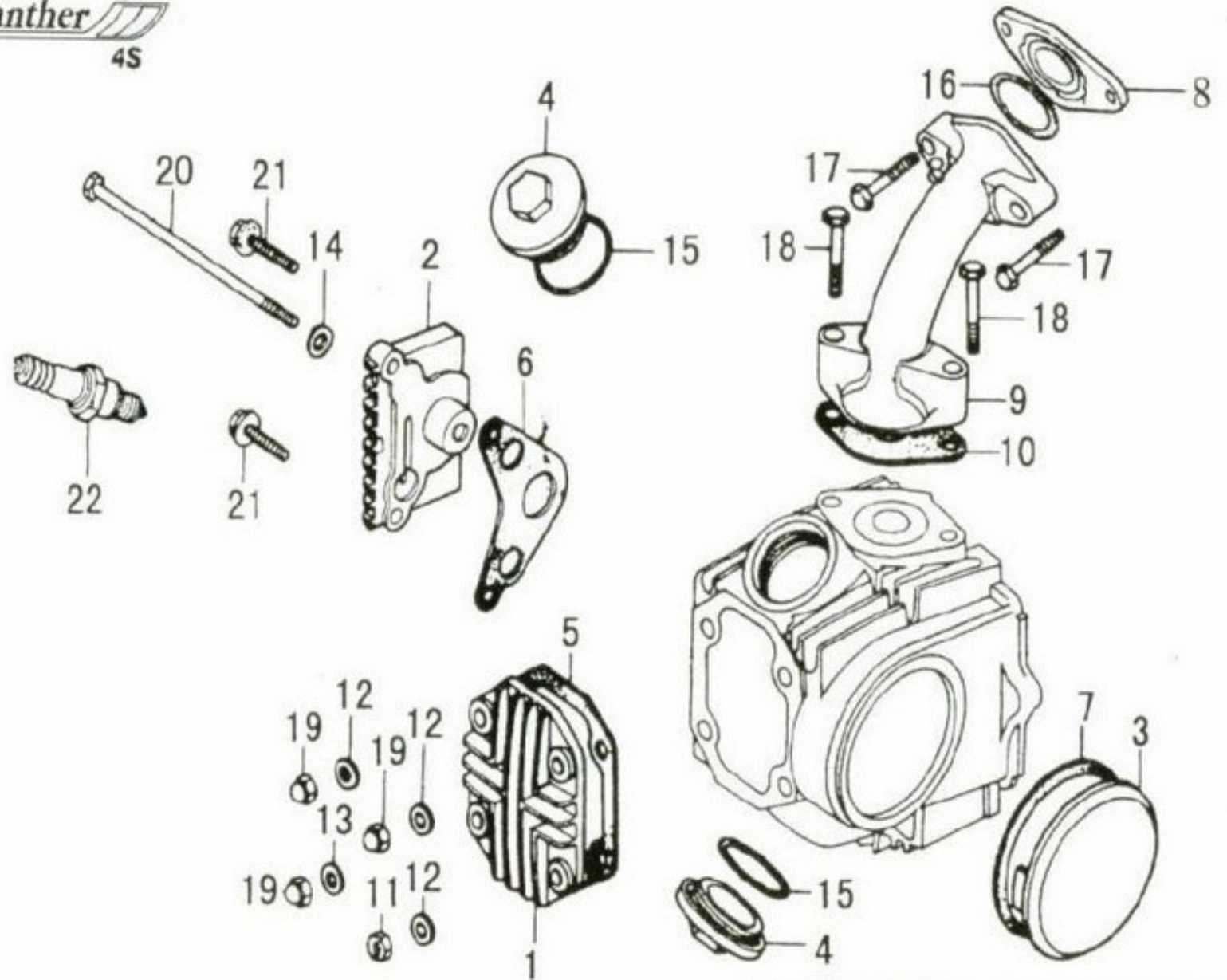
CYLINDER HEAD/BO

CYLINDER HEAD/BODY

REF. NO.	PART NO.	DESCRIPTION	QTY.	REF. NO.	PART NO.	DESCRIPTION	QTY.
1.	332953000100	Cylinder Body	1	21.			
2.	332953000200	Gasket	1	22.			
3.	332953010000	Head Complete	1	23.			
4.	332953010100	In. Pipe	1	24.			
5.	332953010200	Ex. Pipe	1	25.			
6.	332953000300	Gasket Comp	1	26.			
7.	332953000400	Cup, High Voltage Wire	1	27.			
8.	332953010300	Stud Bolt	2	28.			
9.	332953000500	Bolt	2	29.			
10.	332953000600	Collar `A`	1	30.			
11.	332953000700	Collar `B`	1	31.			
12.	332953000800	Seal Ring, Square	1	32.			
13.	332953000900	Seal Ring, Square	1	33.			
14.	332953010400	O - Ring	2	34.			
15.	332953001000	Seal	1	35.			
16.	332953001100	Pin, Position	2	36.			
17.	332953001200	Pin, Position	2	37.			
18.	332953001300	Bolt	1	38.			
19.				39.			
20.				40.			

HERO
STALION
4S

HERO
Panther
4S



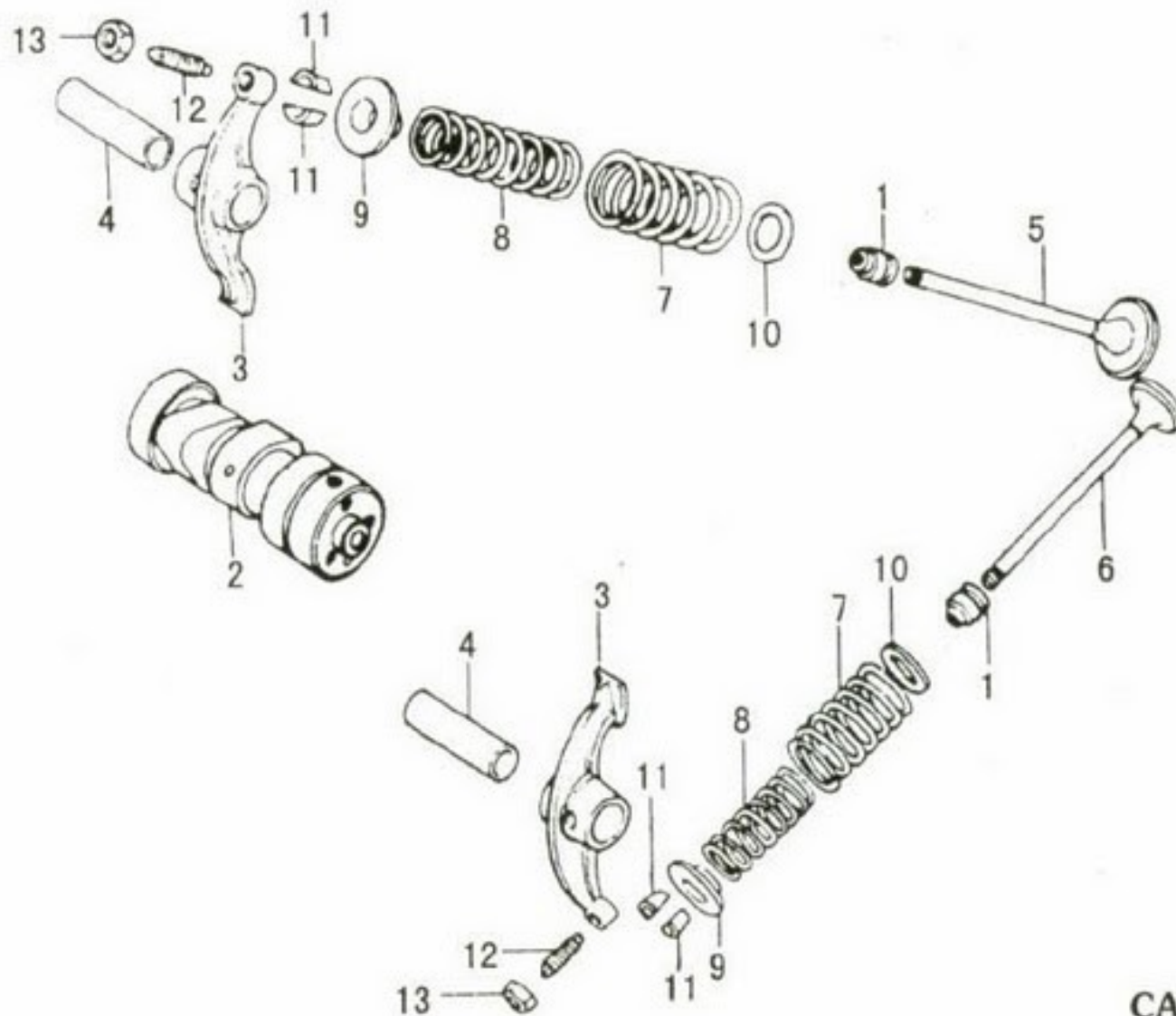
HEAD COVER, CYLINDER/IN. PIPE

HEAD COVER, CYLINDER/IN. PIPE

REF. NO.	PART NO.	DESCRIPTION	QTY.	REF. NO.	PART NO.	DESCRIPTION	QTY.
1.	332953001400	Cylinder Head	1	21.	332953003400	Bolt	2
2.	332953001500	R. Cover, Cylinder	1	22.	332953003500	Spark Plug	1
3.	332953001600	L. Cover, Cylinder	1	23.			
4.	332953001700	Cover, Valve	2	24.			
5.	332953001800	Gasket	1	25.			
6.	332953001900	Gasket, Cylinder Hd. R. Cover	1	26.			
7.	332953002000	Gasket, Cylinder Hd. L. Cover	1	27.			
8.	332953002100	Gasket, Carburettor	1	28.			
9.	332953002200	In. Pipe	1	29.			
10.	332953002300	Gasket, In. Pipe	1	30.			
11.	332953002400	Nut M6	1	31.			
12.	332953002500	Washer	3	32.			
13.	332953002600	Washer	1	33.			
14.	332953002700	Washer	1	34.			
15.	332953002800	O - Ring	2	35.			
16.	332953002900	O - Ring	1	36.			
17.	332953003000	Bolt M6 x 25	2	37.			
18.	332953003100	Bolt M6 x 32	2	38.			
19.	332953003200	Nut, Cover M6	3	39.			
20.	332953003300	Long Bolt	1	40.			

HERO
STALLION
4S

HERO
Panther
4S



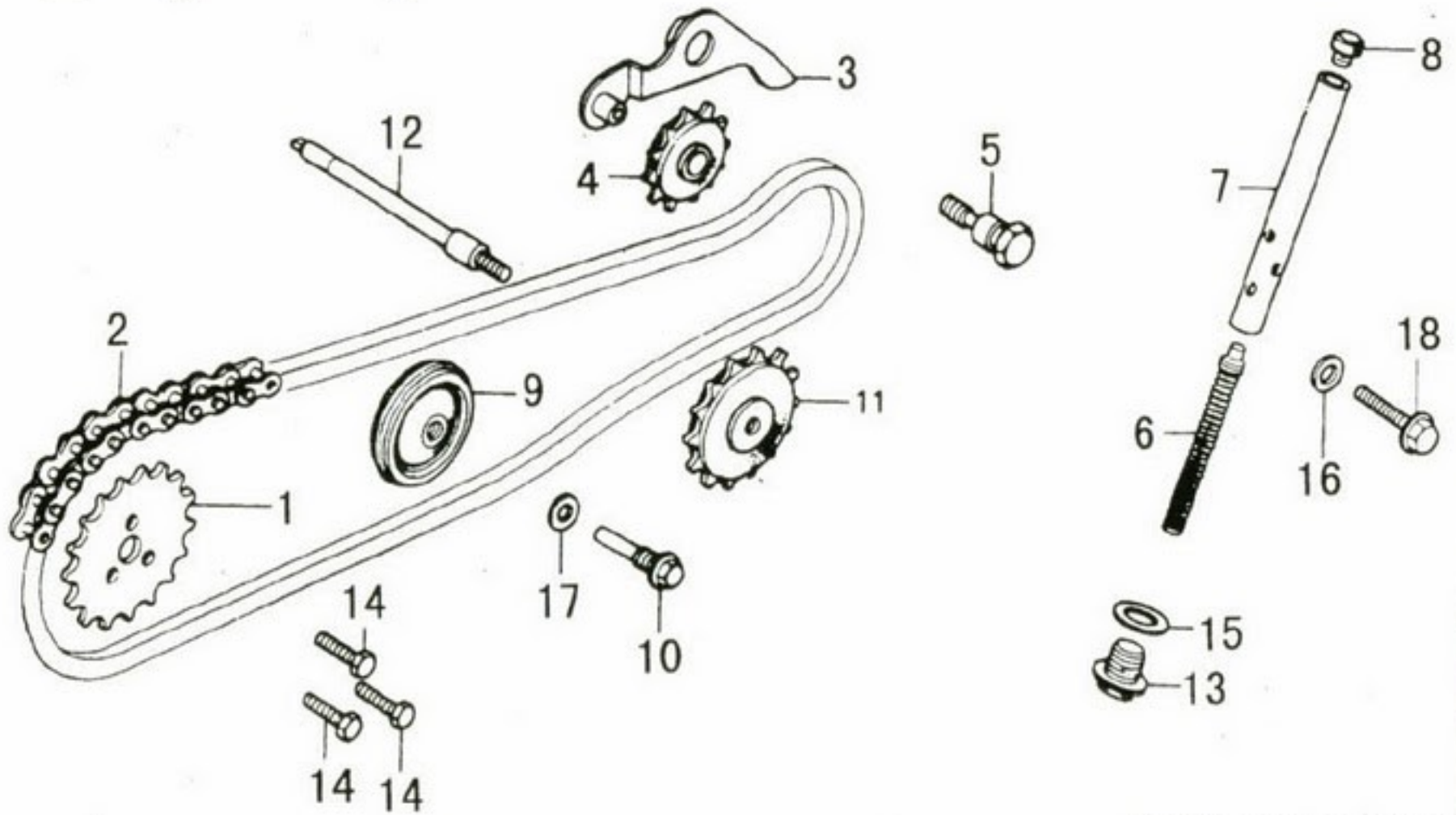
CAM SHAFT/VALV

CAM SHAFT/VALVE

REF. NO.	PART NO.	DESCRIPTION	QTY.	REF. NO.	PART NO.	DESCRIPTION	QTY.
1.	332953003600	Oil Guard Comp	2	21.			
2.	332953003700	Cam Shaft Comp	1	22.			
3.	332953003800	Rocker Arm, Valve	2	23.			
4.	332953003900	Arm Shaft	2	24.			
5.	332953004000	In. Valve	1	25.			
6.	332953004100	Ex. Valve	1	26.			
7.	332953004200	Outer Spring	2	27.			
8.	332953004300	Inner Spring	2	28.			
9.	332953004400	Valve Spring	2	29.			
10.	332953004500	Washer, Outer Spring	2	30.			
11.	332953004600	Clamper, Valve	4	31.			
12.	332953004700	Adjusting Screw, Valve	2	32.			
13.	332953004800	Adjusting Nut, Valve	2	33.			
14.				34.			
15.				35.			
16.				36.			
17.				37.			
18.				38.			
19.				39.			
20.				40.			

HERO
STALION
4S

HERO
Panther
4S



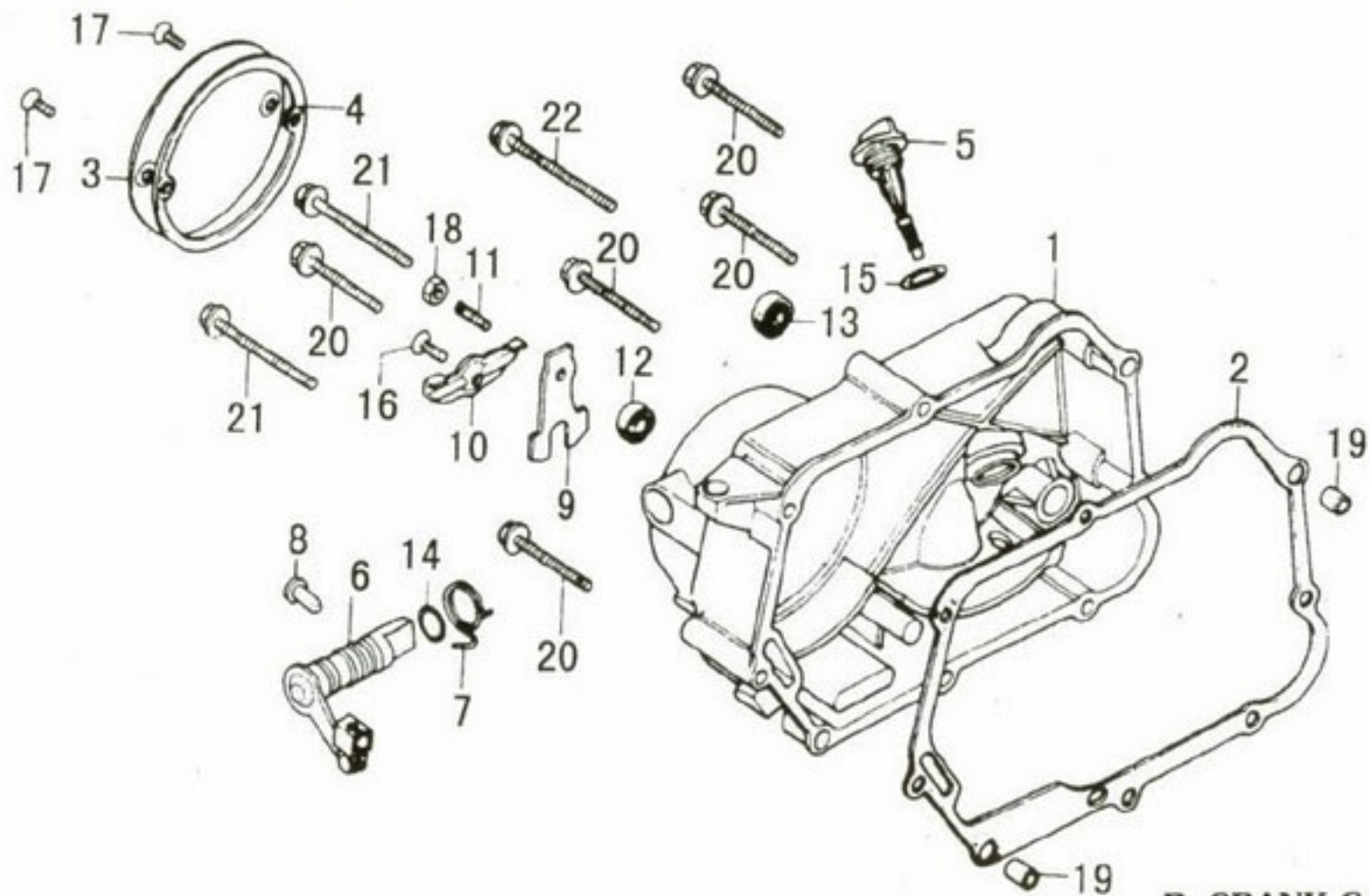
CAM CHAIN/TENSIONER

CAM CHAIN/TENSIONER

REF. NO.	PART NO.	DESCRIPTION	QTY.	REF. NO.	PART NO.	DESCRIPTION	QTY.
1.	332951004100	Time Driven Sproket	1	21.			
2.	332951004200	Chain, Rolling	1	22.			
3.	332951004300	Tensioner Arm Comp, Chain	1	23.			
4.	332951004400	Rolling Gear, Chain Tensioner	1	24.			
5.	332951004500	Shaft, Chain Tensioner	1	25.			
6.	332951004600	Spring, Chain Tensioner Rod	1	26.			
7.	332951004700	Chain Tensioner Rod Comp	1	27.			
8.	332951004800	End, Tensioner Rod	1	28.			
9.	332951004900	Rolling Wheel Comp, Chain	1	29.			
10.	332951005000	Pin Shaft	1	30.			
11.	332951005100	Drive Sprocket Comp, Oil Pump	1	31.			
12.	332951005200	Sprocket Shaft, Oil Pump	1	32.			
13.	332951005300	Plug, Seal	1	33.			
14.	332951005400	Bolt	3	34.			
15.	332951005500	Washer	1	35.			
16.	332951005600	Washer	1	36.			
17.	332951005700	Washer	1	37.			
18.	332951005800	Bolt	1	38.			
19.				39.			
20.				40.			

HERO
STALION
4S

HERO
Panther
4S



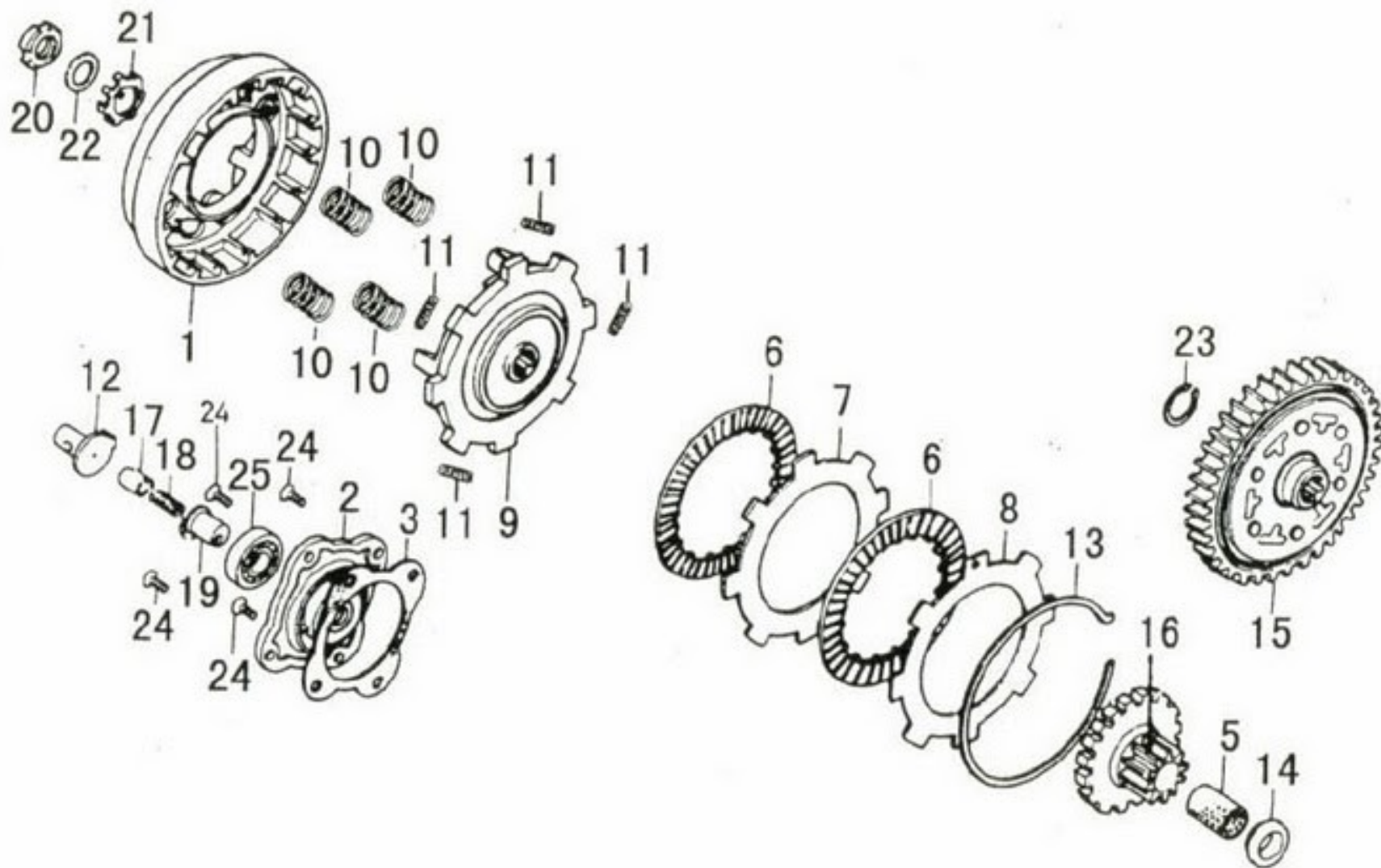
R. CRANK CASE COVE

R. CRANK CASE COVER

REF. NO.	PART NO.	DESCRIPTION	QTY.	REF. NO.	PART NO.	DESCRIPTION	QTY.
1.	332951001900	R. Crank Case Cover	1	21.	332951003900	Bolt M6 x 55	2
2.	332951002000	Gasket, R. Crank Case Cover	1	22.	332951004000	Bolt M6 x 65	1
3.	332951002100	Cover Clutch	1	23.			
4.	332951002200	Gasket Clutch	1	24.			
5.	332951002300	Oil Ruler	1	25.			
6.	332951002400	Cam Shaft Comp Clutch	1	26.			
7.	332951002500	Spring, Cam Shaft, Clutch	1	27.			
8.	332951002600	Pin, Dowel, Cam Shaft	1	28.			
9.	332951002700	Plate Clutch	1	29.			
10.	332951002800	Pressing Plate, Clutch	1	30.			
11.	332951002900	Adjuster Screw	1	31.			
12.	332951003000	Oil Seal 14 x 24 x 5	1	32.			
13.	332951003100	Oil Seal	1	33.			
14.	332951003200	O - Ring	1	34.			
15.	332951003300	O - Ring 18 x 3	1	35.			
16.	332951003400	Screw M6 x 16	1	36.			
17.	332951003500	Screw M5 x 12	2	37.			
18.	332951003600	Nut	1	38.			
19.	332951003700	Pin, Dowel	2	39.			
20.	332951003800	Bolt M6 x 40	5	40.			

HERO
STALION
4S

HERO
Panther
4S



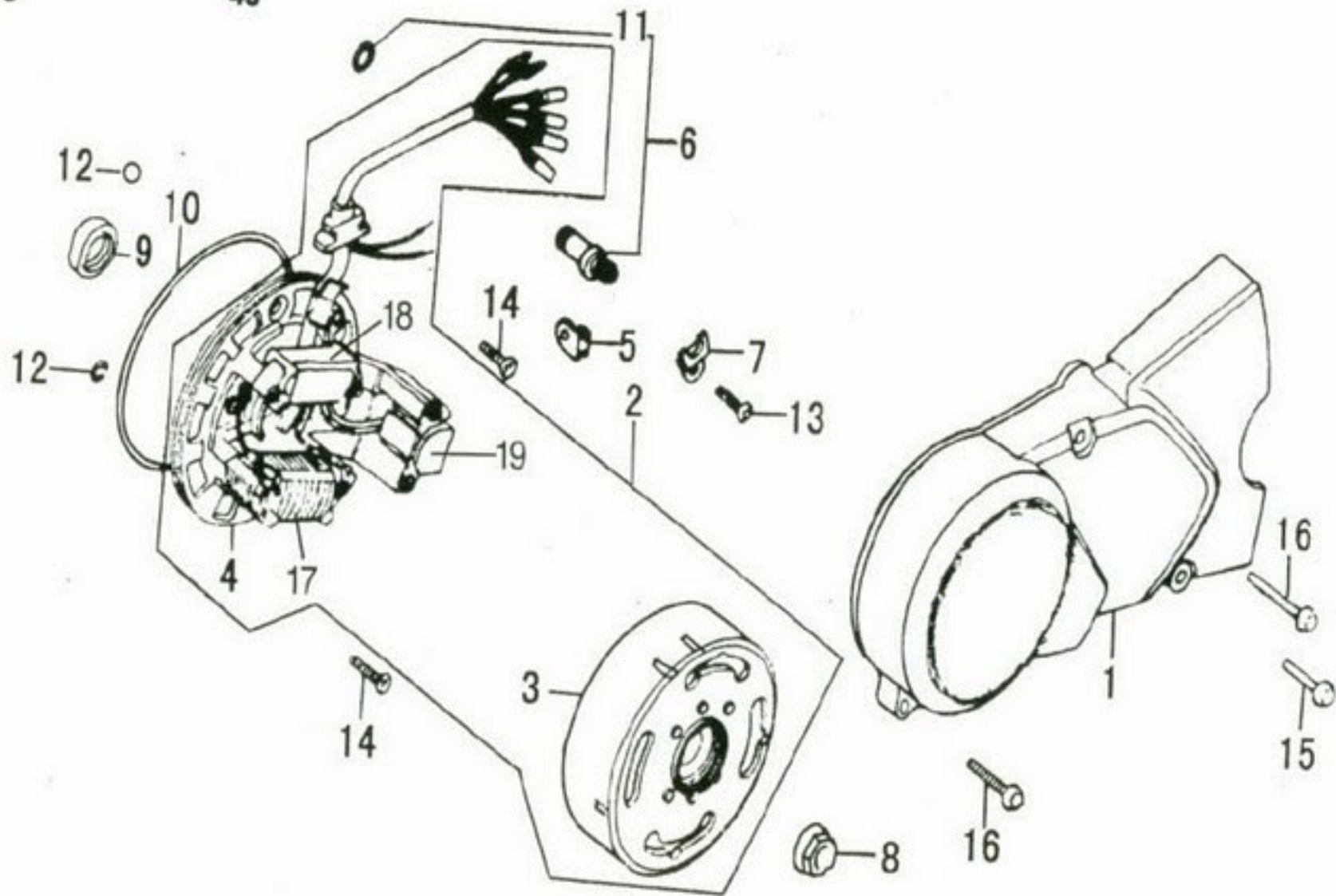
CLUTCH

CLUTCH

REF. NO.	PART NO.	DESCRIPTION	QTY.	REF. NO.	PART NO.	DESCRIPTION	QTY.
1.	332954000100	Outer Cover, Clutch	1	22.	332954002100	Washer, Disk	1
2.	332954000200	Terminal Cover, Clutch	1	23.	332954002200	Ring	1
3.	332954000300	Gasket	1	24.	332954002300	Screw	4
5.	332954000400	Shaft Casement	1	25.	332954002400	Bearing	1
6.	332954000500	Friction Plate	2	26.			
7.	332954000600	Under Plate, Clutch	1	27.			
8.	332954000700	Upper Plate, Clutch	1	28.			
9.	332954000800	Main Plate`	1	29.			
10.	332954000900	Spring	4	30.			
11.	332954001000	Damper Spring, Clutch	4	31.			
12.	332954001100	Pushing Rod, Clutch	1	32.			
13.	332954001200	Elastic Washer	1	33.			
14.	332954001300	Grommet	1	34.			
15.	332954001400	Driven Gear Comp	1	35.			
16.	332954001500	Drive Gear	1	36.			
17.	332954001600	Oil Through	1	37.			
18.	332954001700	Spring, Through	1	38.			
19.	332954001800	Pipe, Oil Through	1	39.			
20.	332954001900	Round Nut	1	40.			
21.	332954002000	Stopper Washer	1	41.			

HERO
STALION
4S

HERO
Panther
4S



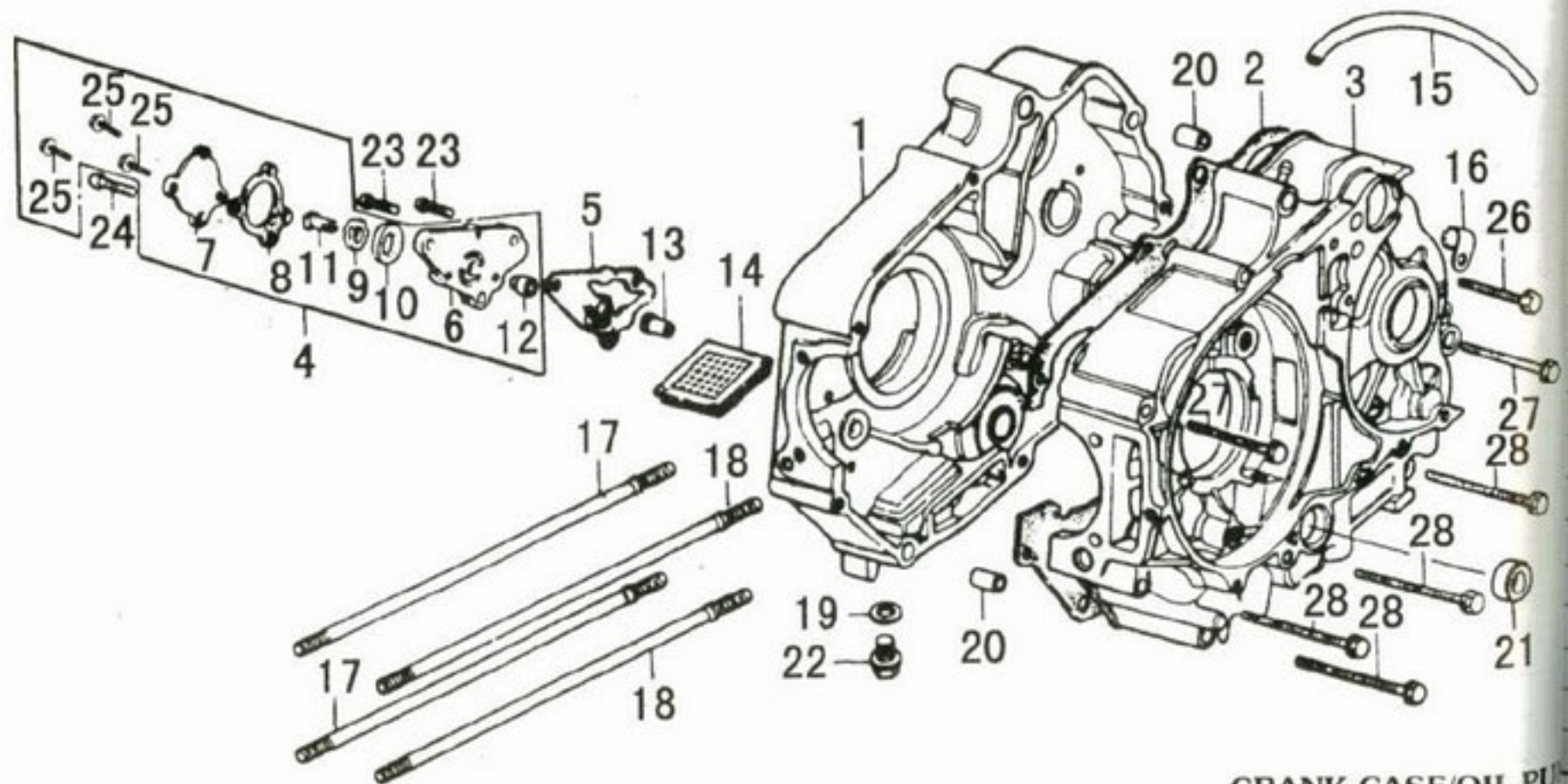
L. CRANK CASE COVER/MAGNET

L. CRANK CASE COVER/MAGNETO

REF. NO.	PART NO.	DESCRIPTION	QTY.	REF. NO.	PART NO.	DESCRIPTION	QTY.
1.	332955000100	L. Crank Case/Cover	1	21.			
2.	332955010000	Magneto	1	22.			
3.	332955010100	Flywheel	1	23.			
4.	332955010200	Stator Comp	1	24.			
5.	332955000200	Insulating Plate, Neutral Gear	1	25.			
6.	332955000300	Neutral Gear Switch	1	26.			
7.	332955000400	Press Plate, Neutral Switch	1	27.			
8.	332955000500	Nut, Hex	1	28.			
9.	332955000600	Oil Seal	1	29.			
10.	332955000700	O - Ring	1	30.			
11.	332955000800	O - Ring	1	31.			
12.	332955000900	O - Ring	2	32.			
13.	332955001000	Screw	1	33.			
14.	332955001100	Screw	2	34.			
15.	332955001200	Bolt	1	35.			
16.	332955001300	Bolt	2	36.			
17.	332955010300	Lighting Coil	1	37.			
18.	332955010400	Ignition Coil	1	38.			
19.	332955010500	Pulser Coil	1	39.			
20.				40.			

HERO
STALION
4S

HERO
Panther
4S



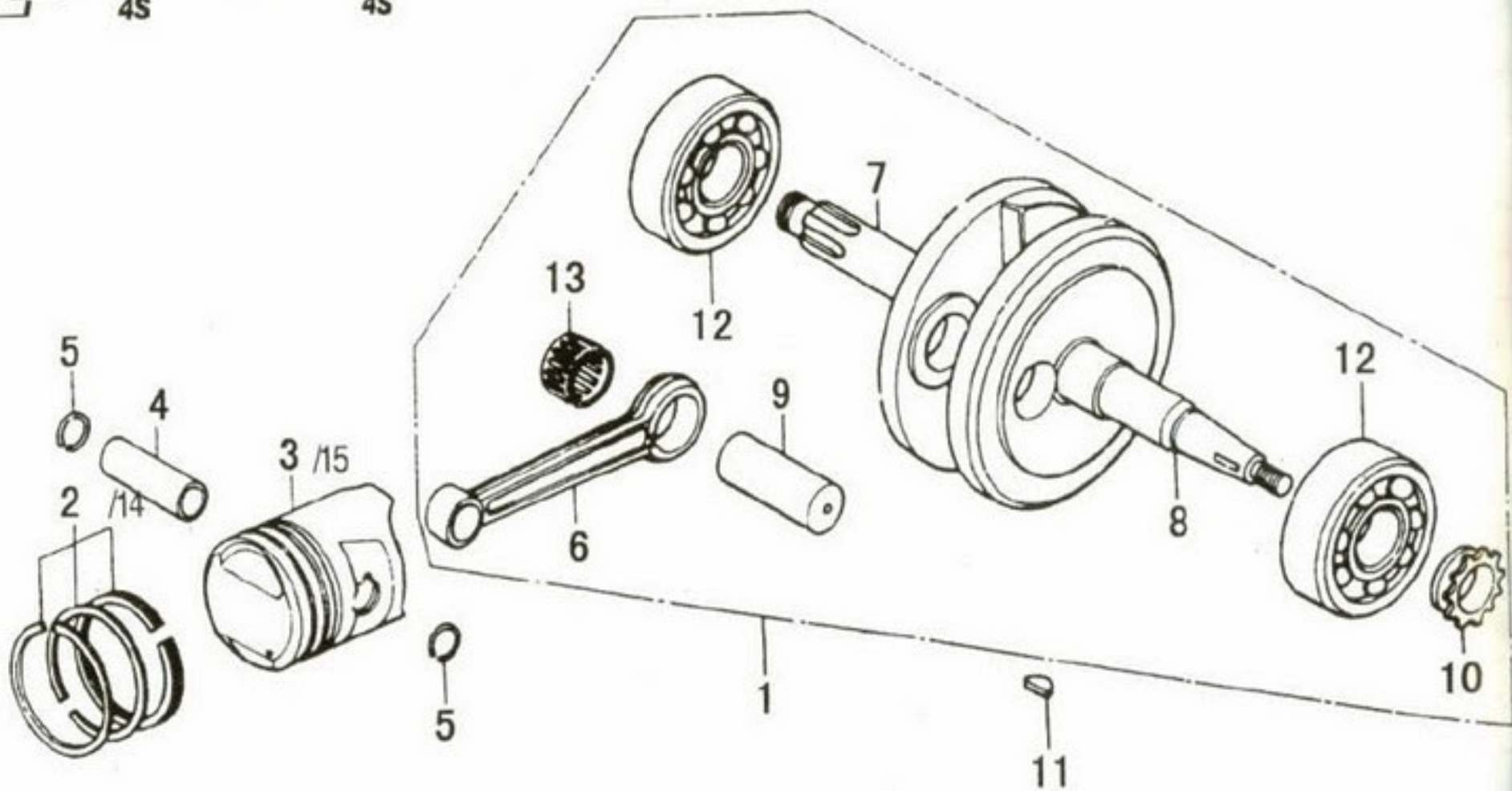
CRANK CASE/OIL PU

CRANK CASE/OIL PUMP

REF. NO.	PART NO.	DESCRIPTION	QTY.	REF. NO.	PART NO.	DESCRIPTION	QTY.
1.	332951000100	R. Crank Case Comp	1	21.	332951001200	Oil - Seal	1
2.	332951000200	Gasket	1	22.	332951001300	Releasing Screw, Oil	1
3.	332951000300	L. Crank Case Comp	1	23.	332951001400	Screw M6 x 16	2
4.	332951020000	Oil Pump Comp	1	24.	332951001500	Screw M6 x 22	1
5.	332951011700	Gasket, Oil Pump	1	25.	332951020100	Screw M5 x 10	3
6.	332951020200	Oil Pump	1	26.	332951001600	Bolt M6 x 50	1
7.	332951020300	Cover, Oil Pump	1	27.	332951001700	Bolt M6 x 60	2
8.	332951020400	Gasket	1	28.	332951001800	Bolt M6 x 65	4
9.	332951020500	Inner Rotor Pump	1	29.			
10.	332951020600	Outer Rotor Pump	1	30.			
11.	332951020700	Oil Pump Shaft	1	31.			
12.	332951020800	Bush Pump	1	32.			
13.	332951000400	Bush, Sprocket	1	33.			
14.	332951000500	Filter Screen, Oil	1	34.			
15.	332951000600	Air Pipe	1	35.			
16.	332951000700	Clip, Pipe	1	36.			
17.	332951000800	Bolt A, Stud	2	37.			
18.	332951000900	Bolt B, Stud	2	38.			
19.	332951001000	Washer	1	39.			
20.	332951001100	Pin	2	40.			

HERO
STALLION
4S

HERO
Panther
4S



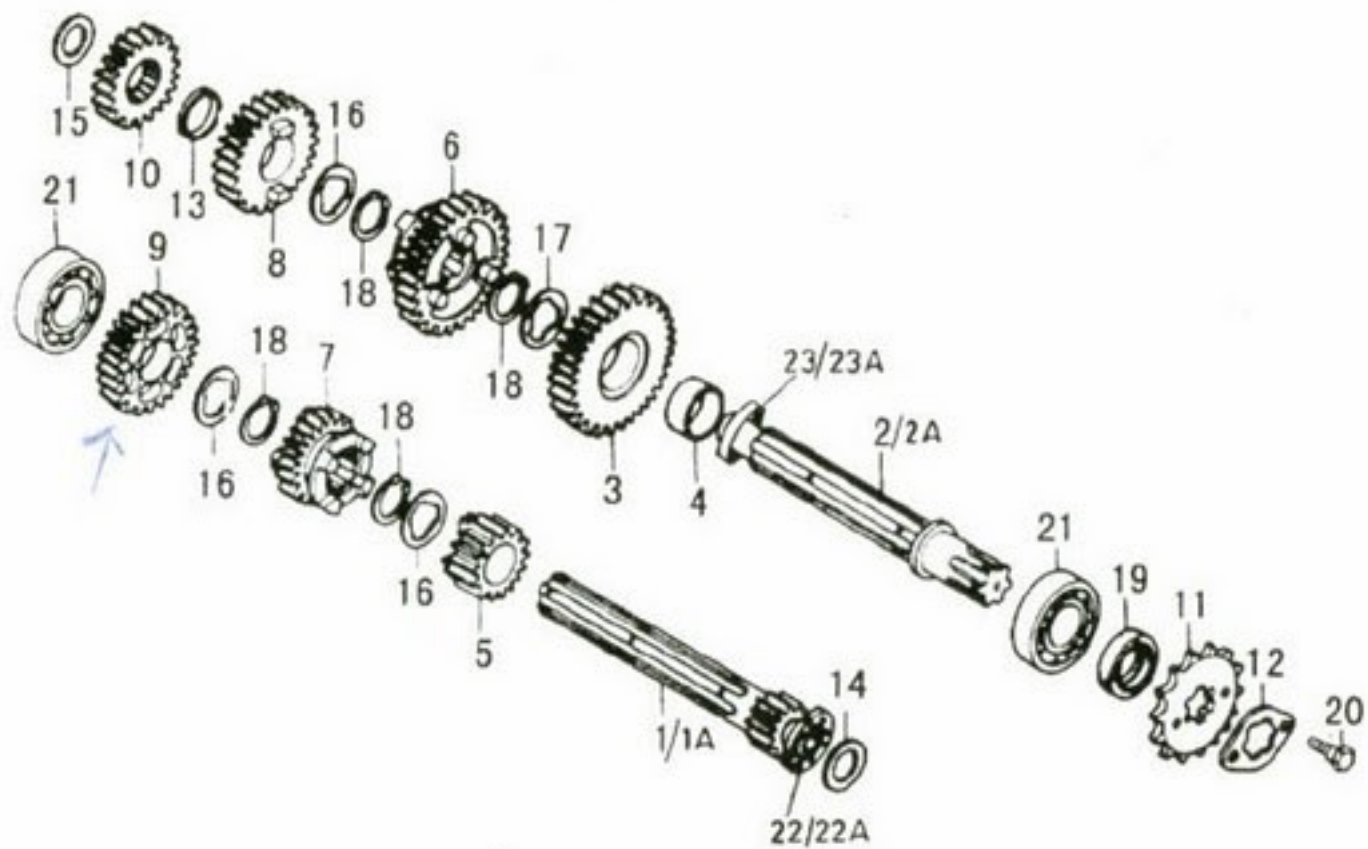
CRANK SHAFT/PISTON

CRANK SHAFT/PISTON

REF. NO.	PART NO.	DESCRIPTION	QTY.	REF. NO.	PART NO.	DESCRIPTION	QTY.
1.	332952010000	Crank Shaft Rod	1	21.			
2.	332952000100	Piston Ring 1	1 SET	22.			
3.	332952000200	Piston (STD)	1	23.			
4.	332952000300	Pin, Piston	1	24.			
5.	332952000400	Circlip, Piston	2	25.			
6.	332952010100	Rod	1	26.			
7.	332952010200	R. Crank Column	1	27.			
8.	332952010300	L. Crank Column	1	28.			
9.	332952010400	Pin	1	29.			
10.	332952010500	Time Drive Gear	1	30.			
11.	332952000500	Key, Semi-Round	1	31.			
12.	332952010600	Bearing	2	32.			
13.	332952010700	Needle Bearing	1	33.			
14.	332952000700	Piston Rings	1 Set	34.			
15.	332952000600	Piston	1	35.			
16.				36.			
17.				37.			
18.				38.			
19.				39.			
20.				40.			

HERO
STALLION
4S

HERO
Panther
4S



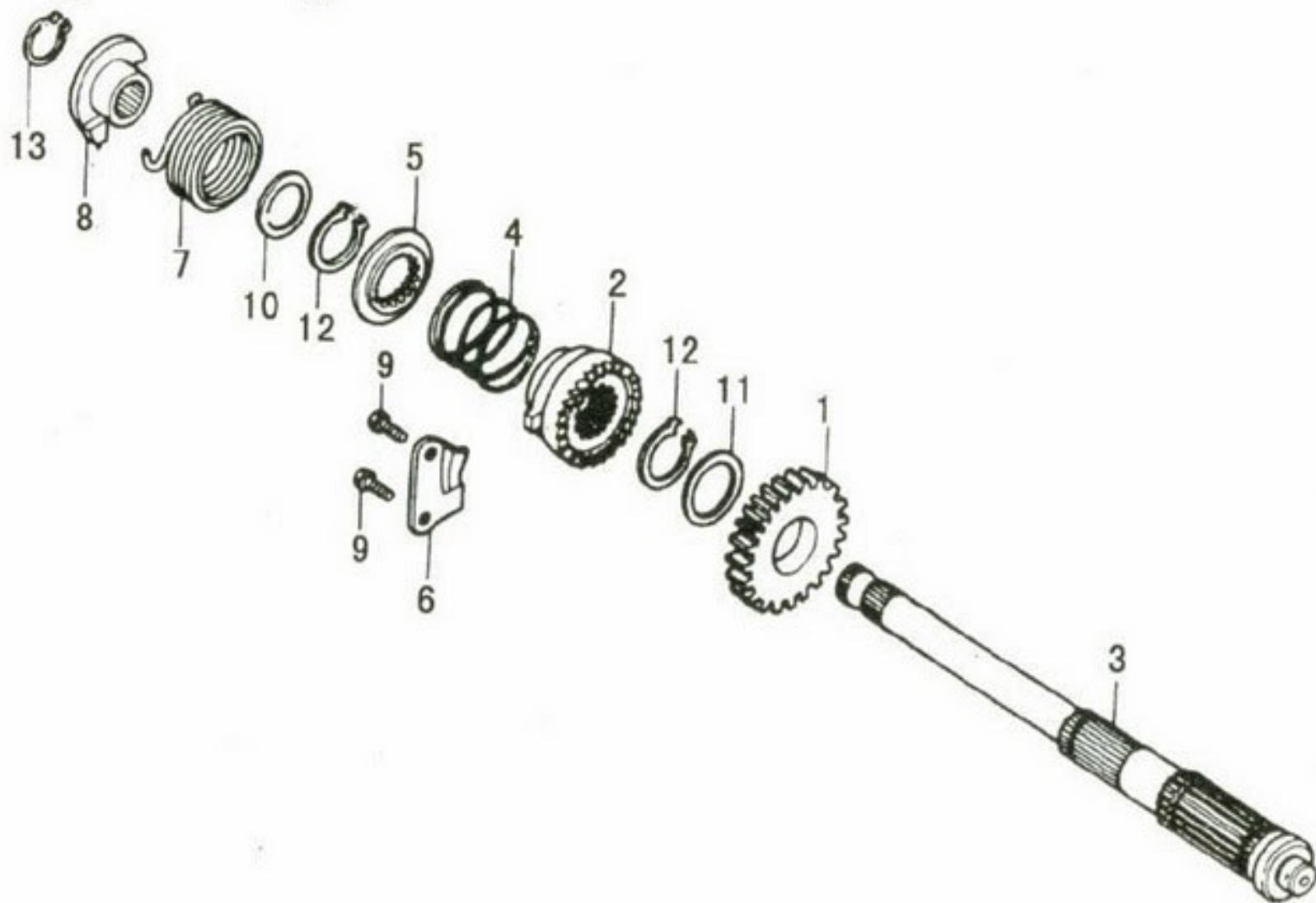
MAIN SHAFT/COUNTER SHAFT

MAIN SHAFT/COUNTER SHAFT

REF. NO.	PART NO.	DESCRIPTION	QTY.	REF. NO.	PART NO.	DESCRIPTION	QTY.
1.	332951005900	Transmission Shaft, Main	1	19.	332951007700	Oil - Seal	1
1A	332951021300	Transmission Shaft, Main	1	20.	332951007800	Bolt M6 x 8	2
2.	332951006000	Transmission Shaft, Counter	1	21.	332951007900	Bearing 203	2
2A	332951021400	Transmission Shaft, Counter	1	22.	332951020900	Needle Bearing 14x20x12	1
3.	332951006100	Gear	1	22A	332951021200	Ball Bearing (6001)-P6	1
4.	332951006200	Collar	1	23.	332951021000	Needle Bearing 13.5x20x12	1
5.	332951006300	Gear	1	23A	332951021100	Ball Bearing (6201)-P6	1
6.	332951006400	Driven Gear, Spline	1				
7.	332951006500	Drive Gear, Spline	1			□ Used with Item No. 22	
8.	332951006600	Gear	1			(Needle Bearing 14x20x12)	
9.	332951006700	Gear	1			* Used with Item No. 22 A	
10.	332951006800	Gear, Spline	1			(Ball Bearing (6001)-P6	
11.	242909000100	Drive Sprocket	1			▲ Used with Item No. 23	
12.	332951007000	Fixing Plate, Drive Sprocket	1			(Needle Bearing 13.5x20x12)	
13.	332951007100	Washer	1			● Used with Item No. 23 A	
14.	332951007200	Stopper Washer	1			(Ball Bearing (6201)-P6	
15.	332951007300	Stopper Washer	1				
16.	332951007400	Washer, Spline	3				
17.	332951007500	Washer, Spline	1				
18.	332951007600	Circlip	4				

HERO
STALLION
4S

HERO
Panther
4S



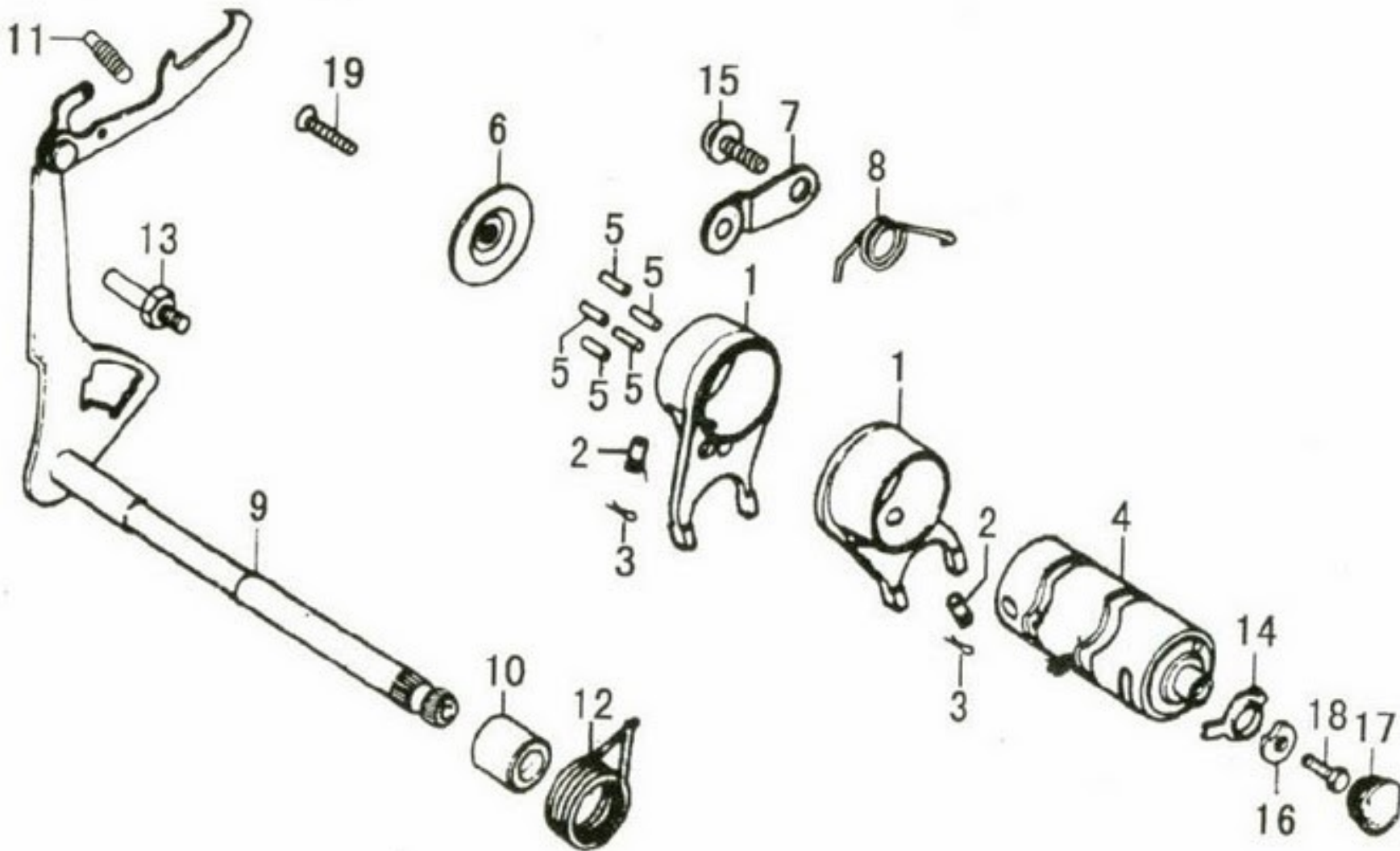
STARTER UN

STARTER UNIT

REF. NO.	PART NO.	DESCRIPTION	QTY.	REF. NO.	PART NO.	DESCRIPTION	QTY.
1.	332951008000	Starter Gear	1	21.			
2.	332951008100	Starter Ratchet	1	22.			
3.	332951008200	Starter Shaft	1	23.			
4.	332951008300	Spring	1	24.			
5.	332951008400	Spring Seat, Ratchet	1	25.			
6.	332951008500	Guide, Ratchet	1	26.			
7.	332951008600	Return Spring, Starter Shaft	1	27.			
8.	332951008700	Spring Holder, Starter Shaft	1	28.			
9.	332951008800	Bolt M6 x 20-Q	2	29.			
10.	332951008900	Washer	1	30.			
11.	332951009000	Washer	1	31.			
12.	332951009100	Washer	2	32.			
13.	332951009200	Washer	1	33.			
14.				34.			
15.				35.			
16.				36.			
17.				37.			
18.				38.			
19.				39.			
20.				40.			

HERO
STALION
4S

HERO
Panther
4S

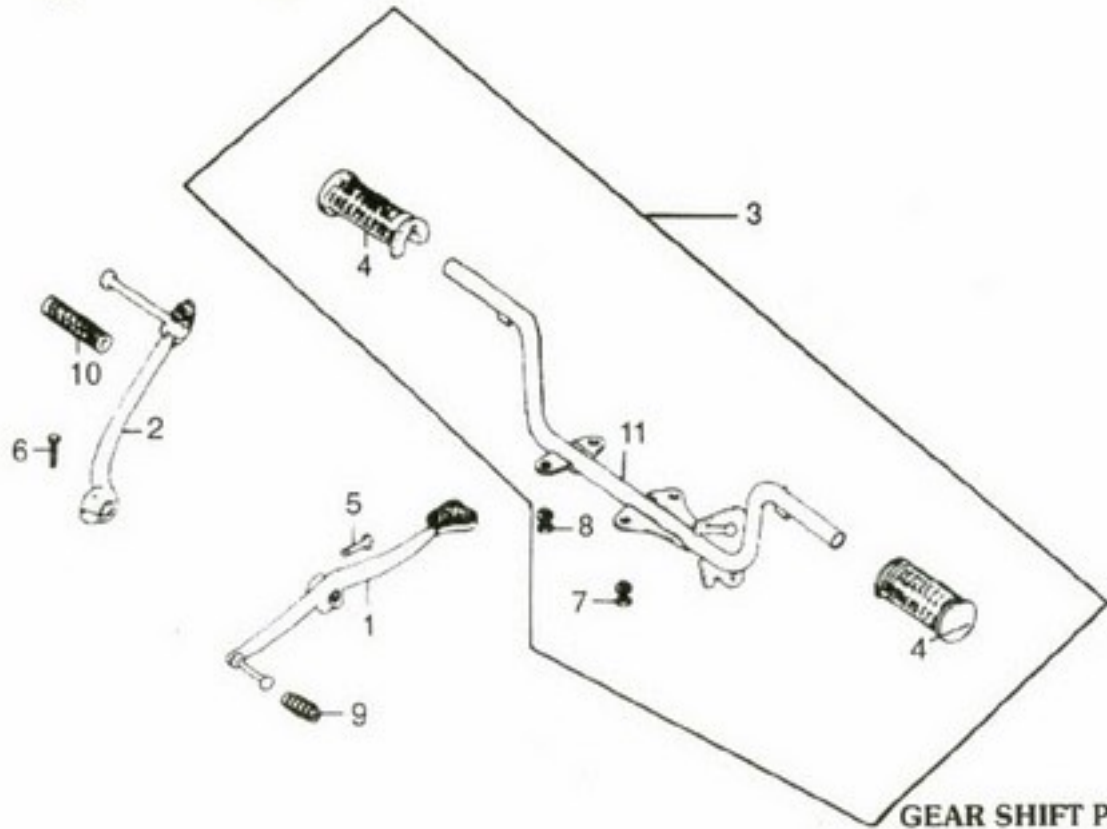


GEAR SHIFT UNIT

REF. NO.	PART NO.	DESCRIPTION	QTY.	REF. NO.	PART NO.	DESCRIPTION	QTY.
1.	332951009600	Fork, Gear	2	21.			
2.	332951009700	Pin	2	22.			
3.	332951009800	Spring Clip	2	23.			
4.	332951009900	Gear Shift Drum	1	24.			
5.	332951010000	Pin, Fixing Plate	5	25.			
6.	332951010100	Washer, Gear Shift	1	26.			
7.	332951010200	Fixing Plate, Gear Shift	1	27.			
8.	332951010300	Spring, Fixing Plate	1	28.			
9.	332951010400	Gear Shift Arm Comp	1	29.			
10.	332951010500	Collar	1	30.			
11.	332951010600	Spring	1	31.			
12.	332951010700	Spring	1	32.			
13.	332951010800	Fixing Bolt	1	33.			
14.	332951010900	Joint, Neutral Gear	1	34.			
15.	332951011000	Bolt, Fixing Screw	1	35.			
16.	332951011100	Washer	1	36.			
17.	332951011200	Rubber Plug	1	37.			
18.	332951011300	Bolt	1	38.			
19.	332951011400	Screw	1	39.			
20.				40.			

HERO
STALLION
4S

HERO
Panther
4S

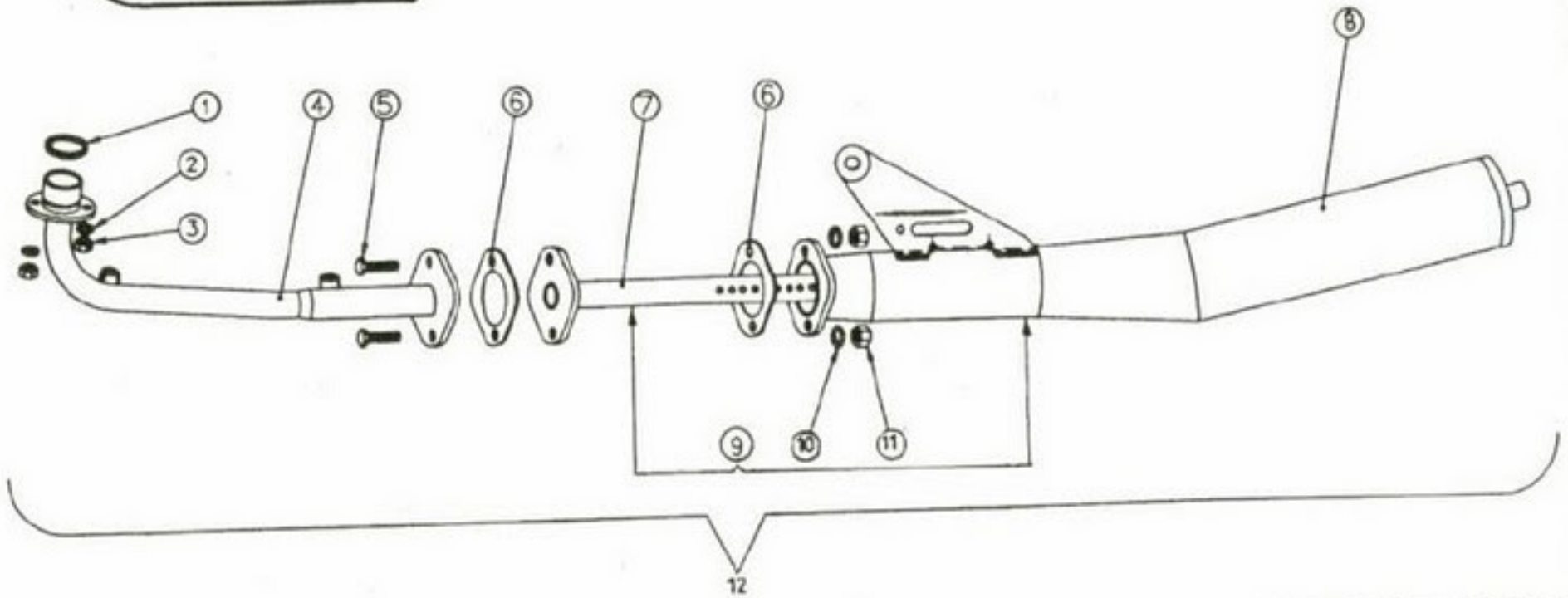
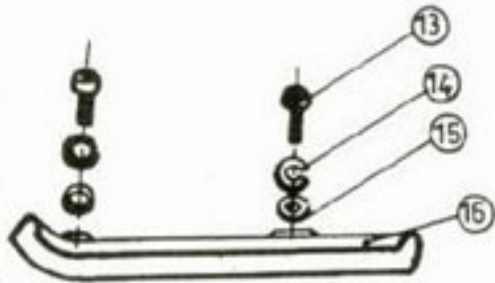


GEAR SHIFT PEDAL/FOOT REST

REF. NO.	PART NO.	DESCRIPTION	QTY.	REF. NO.	PART NO.	DESCRIPTION	QTY.
1.	332924000100	Gear Shift Pedal Comp	1	21.			
2.	332924000200	Starting Arm	1	22.			
3.	002924020000	Foot Rest Comp	1	23.			
4.	171624110100	Rubber - Foot Rest	2	24.			
5.	332924000300	Bolt	1	25.			
6.	332924000400	Bolt	1	26.			
7.	215186821600	HEX Screw M8 x 16	4	27.			
8.	216108201100	Spring Washer	4	28.			
9.	332924000500	Grip, Gear Shift	1	29.			
10.	332924000600	Rubber Grip, Starting Arm	1	30.			
11.	002924010000	Rider Foot Rest Welded	1	31.			
12.				32.			
13.				33.			
14.				34.			
15.				35.			
16.				36.			
17.				37.			
18.				38.			
19.				39.			
20.				40.			

HERO
STALLION
4S

HERO
Panther
4S



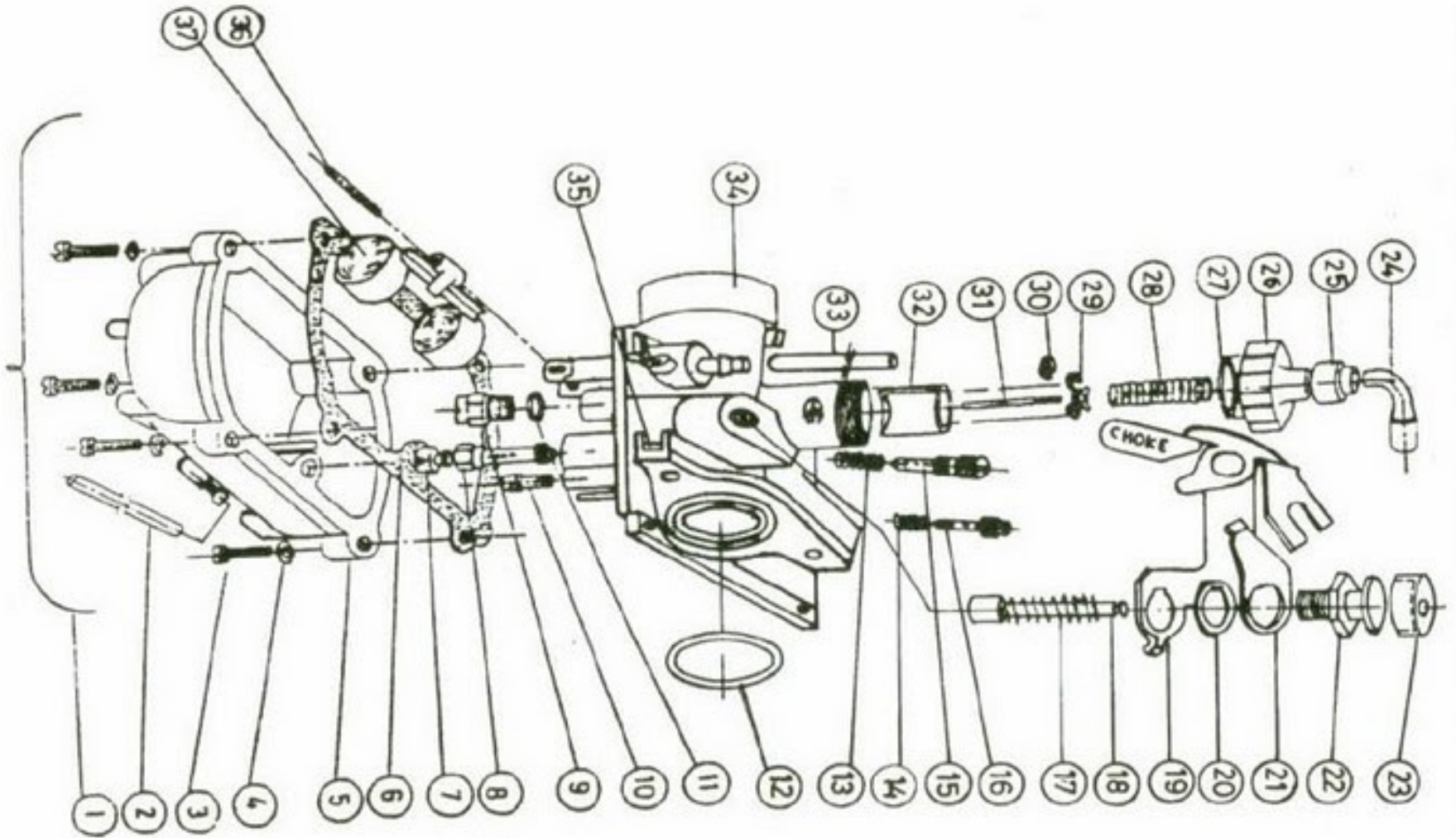
SILENCER ASSEMBLY

SILENCER ASSEMBLY

REF. NO.	PART NO.	DESCRIPTION	QTY.	REF. NO.	PART NO.	DESCRIPTION	QTY.
1.	192957000100	Gasket Silencer	1	19.			
2.	216106201100	Spring Washer B6	2	20.			
3.	216065820100	HEX. Nut M6 x 1	2	21.			
4.	002957020000	Pipe Comp. Exhaust	1	22.			
5.	215165822500	HEX. Screw M6 x 25	2	23.			
6.	191657320100	Gasket	2	24.			
7.	003157020000	Dampening Tube - Welded	1	25.			
8.	002957030000	Silencer Shell Assy.	1	26.			
9.	003157030000	Silencer Shell Assy. with		27.			
		Dampening Tube (Item 7 & 8)	1	28.			
10.	216106201100	Spring Washer B6	2	29.			
11.	216065820100	HEX. Nut M6 x 1	2	30.			
12.	003157010000	Silencer Assy. (Excluding Items 1,2 & 3)	1	31.			
13.	369061010700	Cross Recessed Pan Hd.		32.			
		Screw M5 x 7	2	33.			
14.	216105201100	Spring Washer B5	2	34.			
15.	216105100100	Punched Washer A5.5	2	35.			
16.	243157010100	Cover-Exhaust Pipe	1	36.			
17.				37.			
18.				38.			

HERO
STALION
4S

HERO
Panther
4S



CARBURETTOR ASSY.

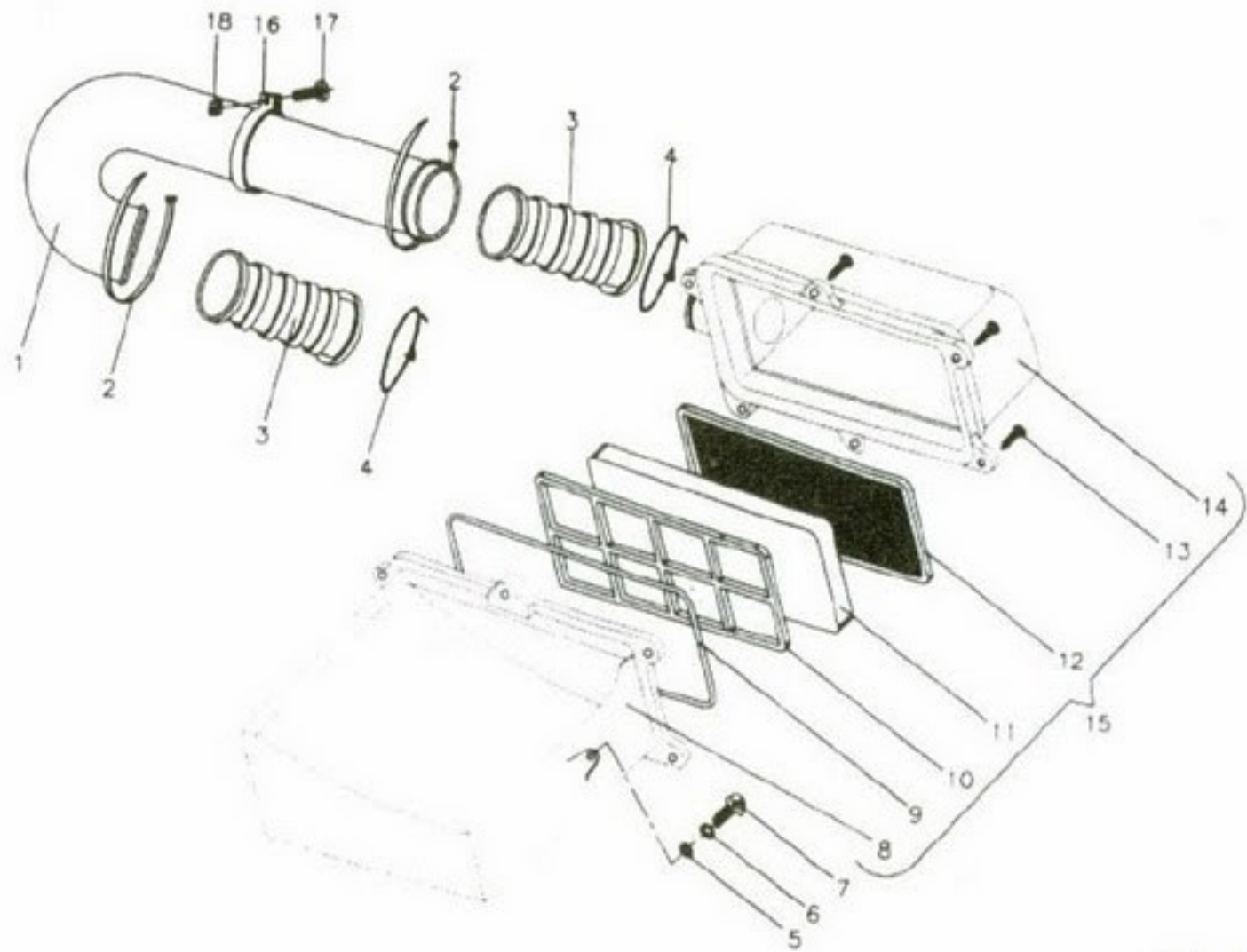
CARBURETTOR ASSY. 4S

REF. NO.	PART NO.	DESCRIPTION	QTY.	REF. NO.	PART NO.	DESCRIPTION	QTY.
1.*	002959020000	Carburettor Assy.	1	21.	332959020200	St. Washer	1
2.	332959021800	Tube Over Flow	1	22.	332959020700	Guide Holder	1
3.	331159022200	F.C.B. Screw (M4 x 18)	4	23.	332959020600	Cap Plunger	1
4.	216104201100	Spring Washer B4	4	24.	292959000100	Cable Deflector	1
5.	332959022000	F.C. Body Assy.	1	25.	331659131200	Cap M.C. Top	1
6.	332959022300	Gasket F.C.B.	1	26.	331659131300	M.C. Top	1
7.	332959022600	Main Jet # 85	1	27.	331159022800	Packing Top	1
8.	332959022400	Needle Jet E2G (LTW)	1	28.	332959021600	Throttle Spring	1
9.	332959022100	Needle Valve Assy.	1	29.	332959021300	Spring Plate/Circlip	1
10.	331659130500	Pilot Jet # 10	1	30.	331159020700	Spring Clip	1
11.	331159022700	Packing Valve Seat	1	31.	332959022500	Jet Needle 4L-2	1
12.	332959022200	'O' Ring	1	32.	332959021500	Piston Valve CA 3.0	1
13.	331159020800	Spring	1	33.	332959021700	Tube Air Vent	1
14.	331159020800	Spring	1	34.	332959021900	M.C. Body Assy.	1
15.	332959021400	Throttle Adjuster	1	35.	332959020300	Nut (M6 x 1)	2
16.	331159020900	Air Screw (Adjuster)	1	36.	332959022700	Flot Hinge Pin	1
17.	332959020800	Plunger Spring	1	37.	331159020200	Float Assy.	1
18.	332959020900	St. Plunger Assy.	1	38.			
19.	332959020100	Lever Assy.	1	39.			
20.	331159022800	Tab Washer	1	40.			

*without cable deflector (S. No. 24)

HERO
STALLION
4S

HERO
Panther
4S



AIR FILTER ASSY.

REF. NO.	PART NO.	DESCRIPTION	QTY.	REF. NO.	PART NO.	DESCRIPTION	QTY.
1.	182959011000	Bend Pipe Air Filter	1	21.			
2.	181659150300	Cable Tie	2	22.			
3.	172959010500	Hose-Air Filter	2	23.			
4.	202959000200	Clamp-Hose-Air-Filter	2	24.			
5.	216106100100	Punched Washer A6.6	2	25.			
6.	216106201100	Spring Washer B6	2	26.			
7.	215365611400	Ch. Hd. Screw M6 x 14	2	27.			
8.	182959010100	Air Filter Body	1	28.			
9.	172959010600	Rubber Packing	1	29.			
10.	182959010300	Air Filter Cage	1	30.			
11.	172959010400	Air Filter Foam	1	31.			
12.	342959010800	Support Air Filter Foam	1	32.			
13.	364400120200	Tapping Screw AB 4 x 13L	6	33.			
14.	182959010200	Air Filter Cover	1	34.			
15.	002959040000	Air Filter Assy.	1	35.			
16.	242959000400	Clamp	2	36.			
17.	215343612500	Ch. Hd. Screw M4x25	2	37.			
18.	360107001300	Sq. Nut Spl.	2	38.			
19.				39.			
20.				40.			