

SPARE PART CATALOGUE · BYE BIKE ONE & ONE+ (45 Km/h)



DESPIECE ONE & ONE+

Marzo 2016 | Todos los derechos reservados

Está prohibida la reproducción de este documento sin el permiso expreso de TECNIGAS PARTS S.L.

Sólo los recambios originales BYE BIKE ofrecen una garantía de calidad y garantizan que su vehículo podrá continuar funcionando en perfectas condiciones durante mucho tiempo.

Las especificaciones, apariencia, colores (incluyendo el color de la carrocería), equipamiento, materiales y otras características de los productos BYE BIKE están sujetas a cambio sin previo aviso y pueden variar dependiendo de las normativas o requisitos locales. Los modelos de los dibujos pueden llevar equipamientos extra que no són aplicados a los modelos estandard.

PART LIST ONE & ONE+

March 2016 | All rights reserved.

Reproduction of this document without TECNIGAS PARTS S.L.'s express permission is expressly prohibited.

Only original spare parts and accessories BYE BIKE offer a technical quality and ensure your vehicle will run in perfect condition for a long time.

Specifications, appearance, color (including all covers), equipment, materials and other features of the BYE BIKE products are subject to change without any previous notice and may vary depending on local regulations or requirements. The illustrated models partly contain extra equipment, which is not applied to standard models.

NÚMEROS DE IDENTIFICACIÓN / IDENTIFICATION NUMBER

Localización de los números de identificación del vehículo y del motor.

Engine and vehicle number location.



1. Número de identificación del motor (EIN)
1. Engine identification number (EIN)

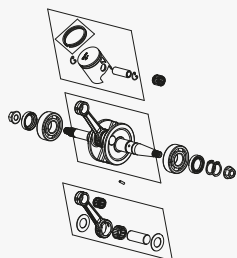


1. Número de identificación del vehículo (VIN)
1. Vehicle identification number (VIN)

BYE BIKE

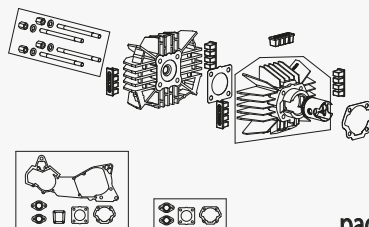
TECNIGAS PARTS S.L.
Pol. Pla de la Font, Parc. 1.
E-17832, Crespià. SPAIN.
Tel. (+34) 972 570 988
Fax (+34) 972 570 950
www.byebike.com
info@byebike.com

CIGÜEÑAL | 01 CRANKSHAFT



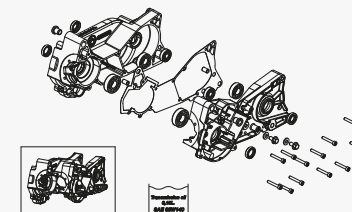
pag. 8

CILINDRO | 02 CYLINDER



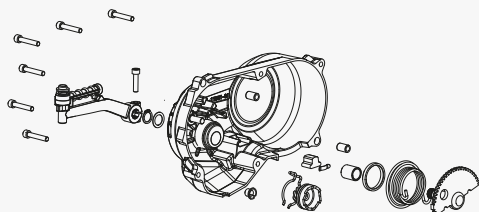
pag. 10

CÁRTER | 03 CRANKCASE



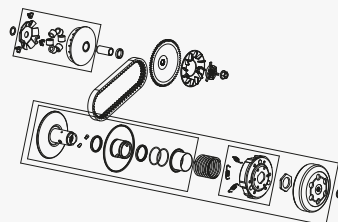
pag. 12

PEDAL DE ARRANQUE | 04 KICKSTARTER



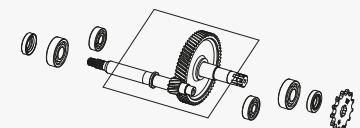
pag. 14

TRANSMISIÓN CVT | 05 CVT TRANSMISSION



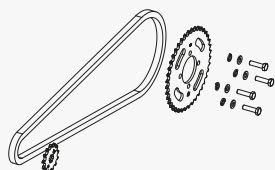
pag. 16

TRANSMISIÓN REDUCTORA | 06 REDUCTION TRANSMISSION



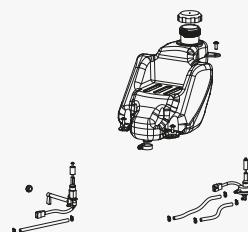
pag. 18

TRANSMISIÓN DE CADENA | 07 CHAIN TRANSMISSION



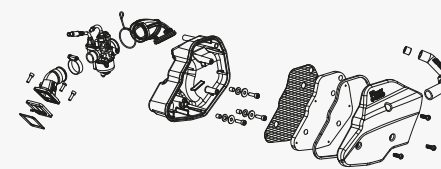
pag. 20

DEPÓSITO DE COMBUSTIBLE | 08 FUEL TANK



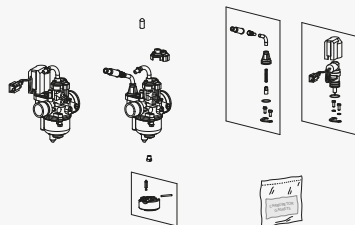
pag. 22

FILTRO DE AIRE | 09 AIR FILTER



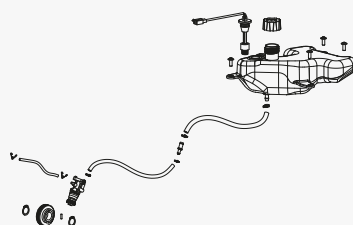
pag. 24

CARBURADOR | 10 CARBURETOR



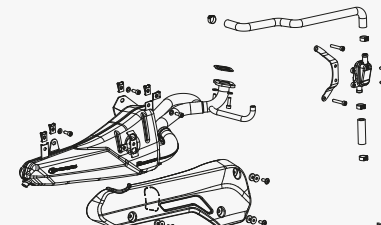
pag. 26

LUBRICACIÓN | 11 LUBRICATION



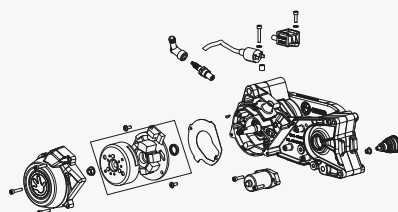
pag. 28

TUBO DE ESCAPE | 12 EXHAUST SYSTEM



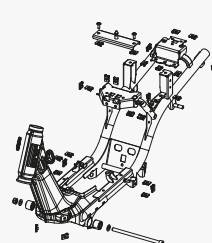
pag. 30

VOLANTE MAGNÉTICO | 13 FLYWHEEL MAGNETO



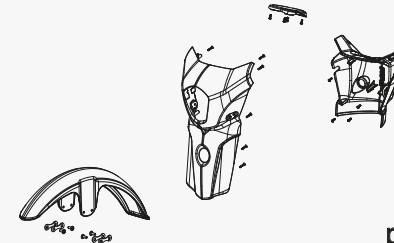
pag. 32

BASTIDOR | 14 FRAME



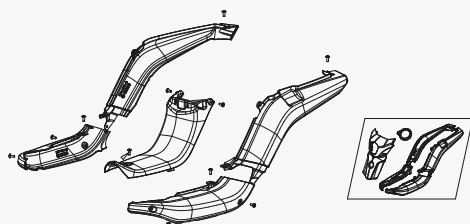
pag. 34

CARROCERÍA FRONTAL | 15 FRONT COVER



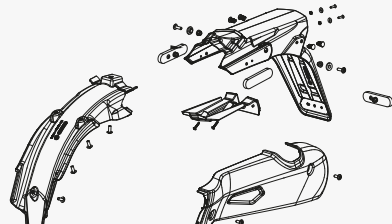
pag. 36

CARROCERÍA CENTRAL | 16 CENTRAL COVER



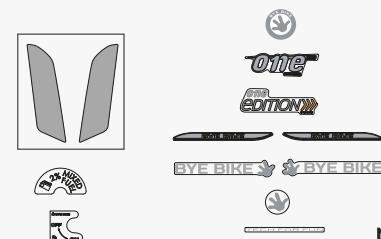
pag. 38

CARROCERÍA POSTERIOR | 17 BACK COVER



pag. 40

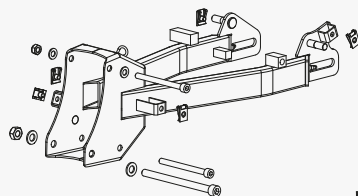
ADHESIVOS | 18 STICKERS



pag. 42

BASCULANTE | 19

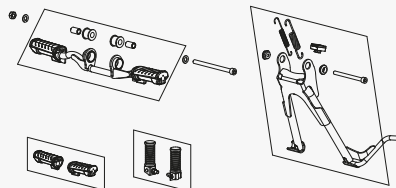
SWINGING ARM



pag. 44

CABALLETE & ESTRIBOS | 20

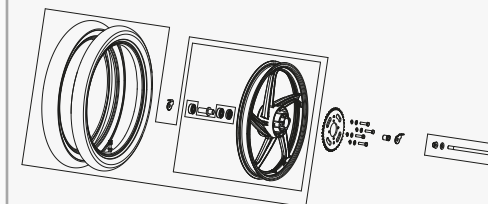
STAND & FOOTREST



pag. 46

RUEDA TRASERA | 21

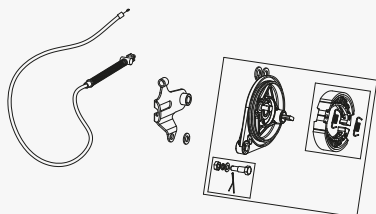
REAR WHEEL



pag. 48

FRENO TRASERO | 22

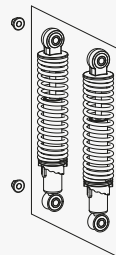
REAR BRAKE



pag. 50

SUSPENSIÓN TRASERA | 23

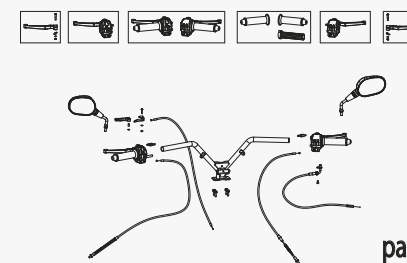
REAR SUSPENSION



pag. 52

MANILLAR | 24

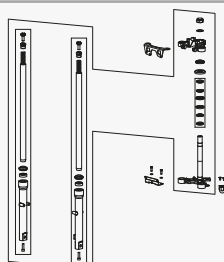
HANDLEBAR



pag. 54

HORQUILLA DELANTERA | 25

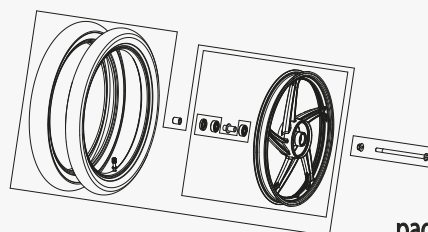
FRONT FORK



pag. 56

RUEDA DELANTERA | 26

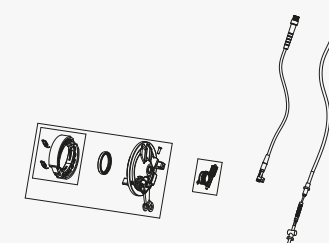
FRONT WHEEL



pag. 58

FRENO DELANTERO | 27

FRONT BRAKE



pag. 60

28

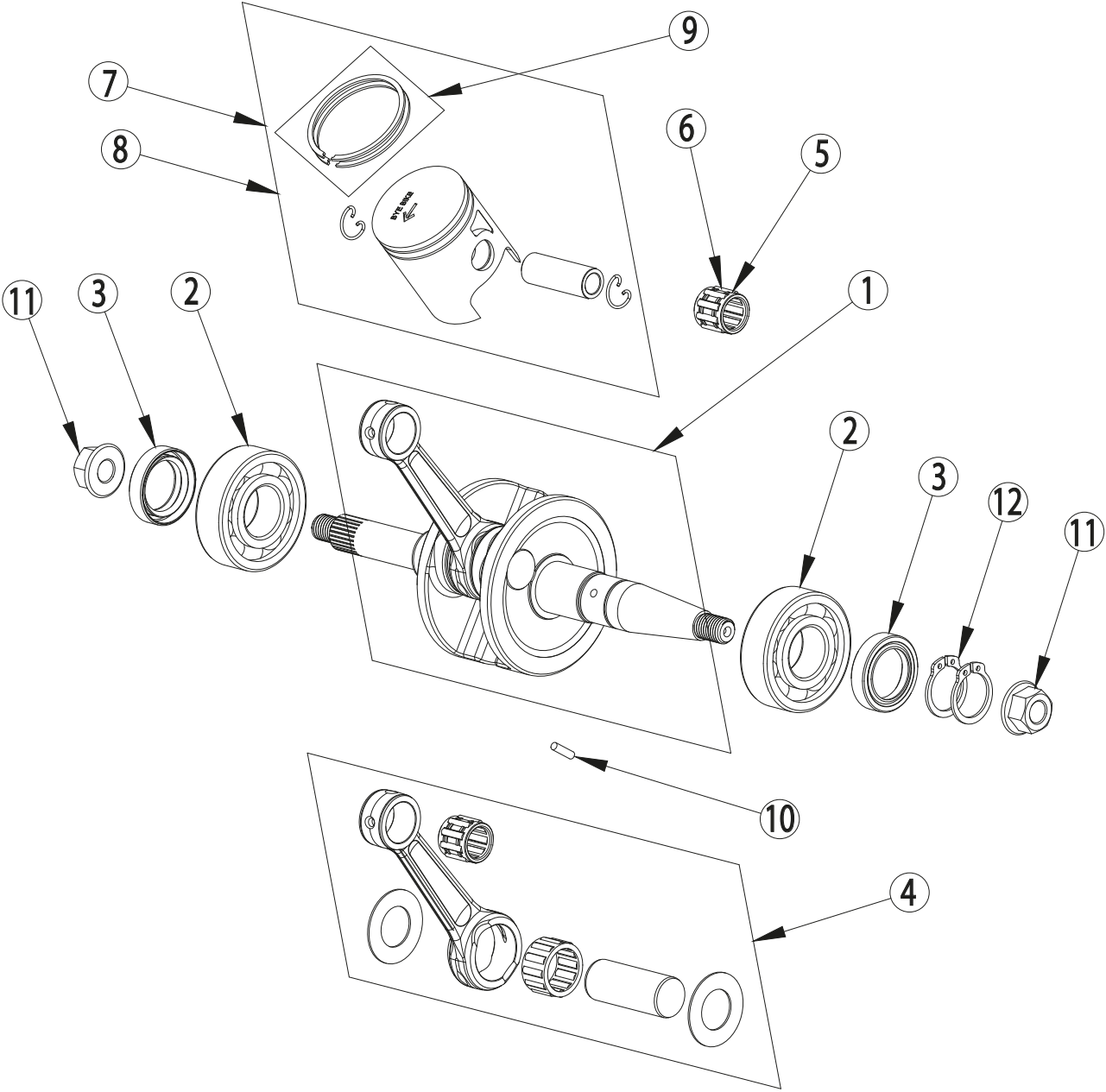


29



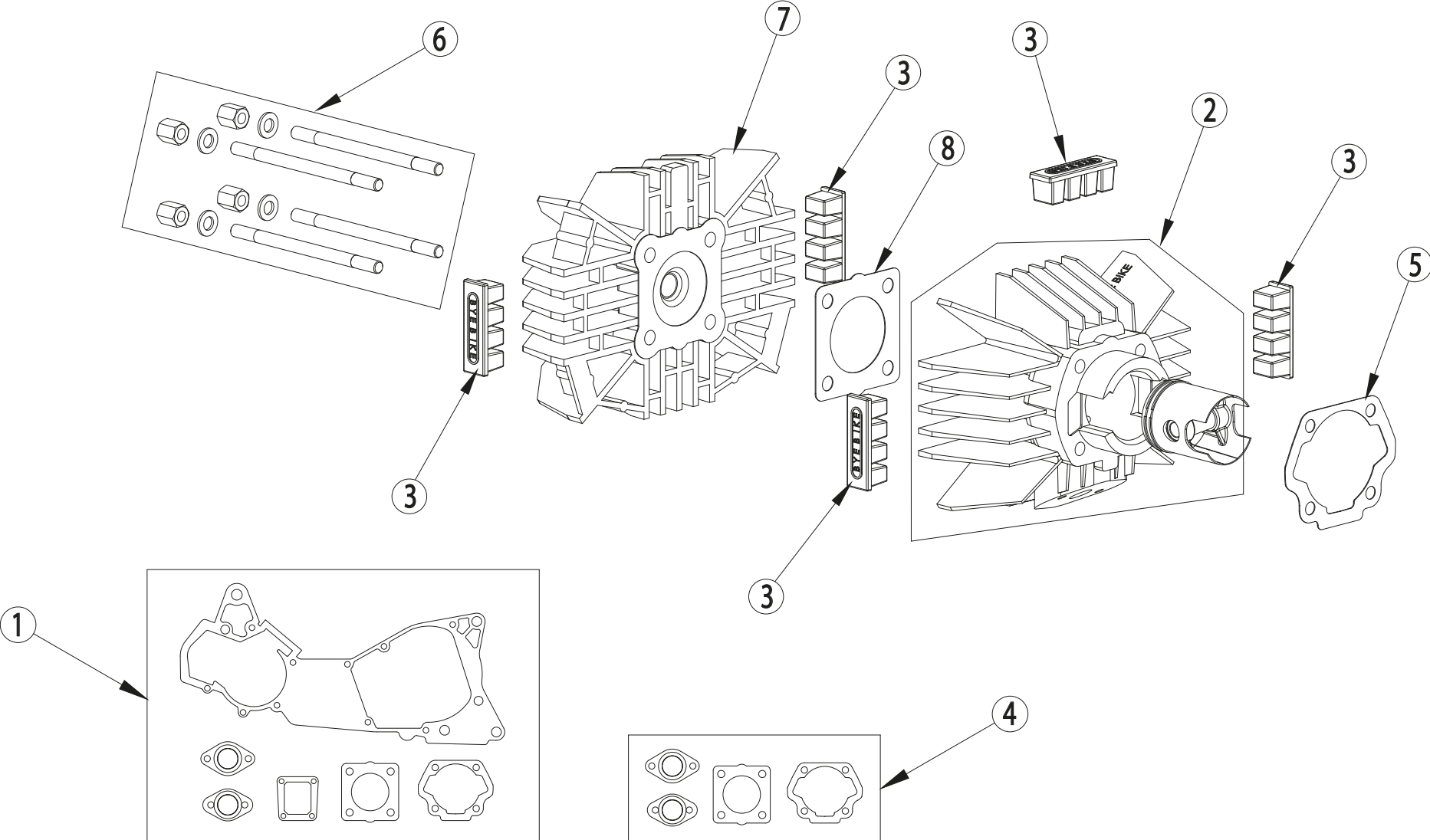
30



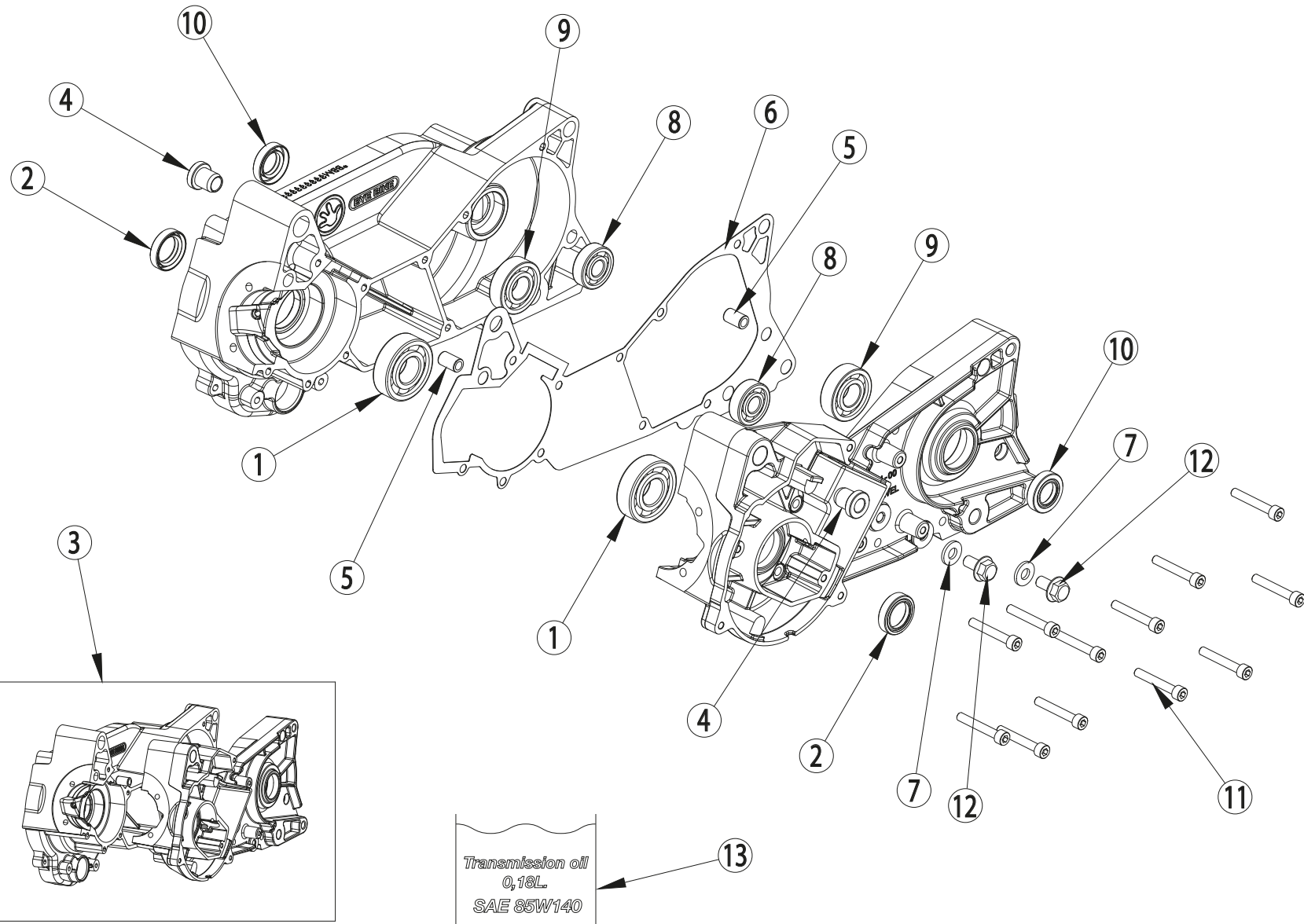




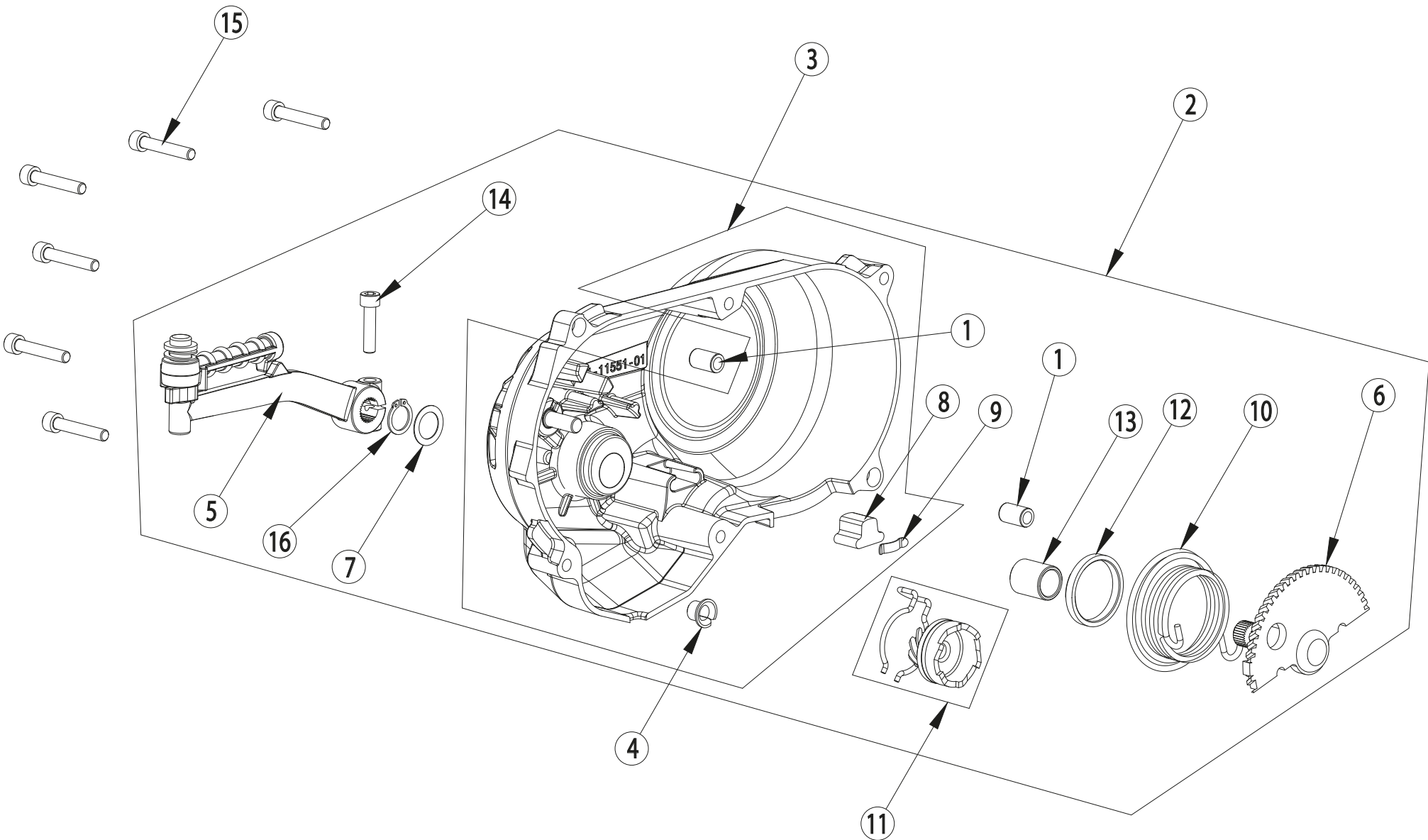
| Nº | Ref. | Descripción / Description | Qty. |
|----|-------------------|--|------|
| 1 | BB01-11110-00-810 | Cjto. cigüeñal / Crankshaft assy. | 1 |
| 2 | BB01-11191-00-810 | Rodamiento cigüeñal 6204 C4 / Crankshaft bearing 6204 C4 | 2 |
| 3 | BB01-11195-00-810 | Retén cigüeñal 20x30x7 TC / Crankshaft seal 20x30x7 TC | 2 |
| 4 | BB01-11210-00-810 | Cjto. biela / Rod assy. | 1 |
| 5 | BB01-11281-00-810 | Rodamiento pistón 12x17x16 / Piston bearing 12x17x16 | - |
| 5 | BB01-11283-00-810 | Rodamiento pistón 12x16x15 / Piston bearing 12x16x15 | 1 |
| 6 | BB01-11309-00-810 | Cjto. pistón Ø39,88 / Piston assy. Ø39,88 | 1 |
| 7 | BB01-11310-00-810 | Cjto. pistón Ø39,87 / Piston assy. Ø39,87 | 1 |
| 8 | BB01-11320-00-810 | Cjto. segmentos pistón Ø39,87 / Piston ring kit Ø39,87 | 1 |
| 9 | BB01-16175-00-810 | Pasador engranaje bomba aceite / Oil pump gear pin | 1 |
| 10 | 00280224 | Tuerca M10x1,25 / Nut M10x1,25 (5 unit/kit) | 1 |
| 11 | 00280239 | Anillo seguridad Ø19 / Lock ring Ø19 (25 unit/kit) | |



* La pieza n°7 incluye cilindro Ø40 + cito. pistón Ø39,90. / Part n°7 include cylinder Ø40 + piston assy. Ø39.87.



13

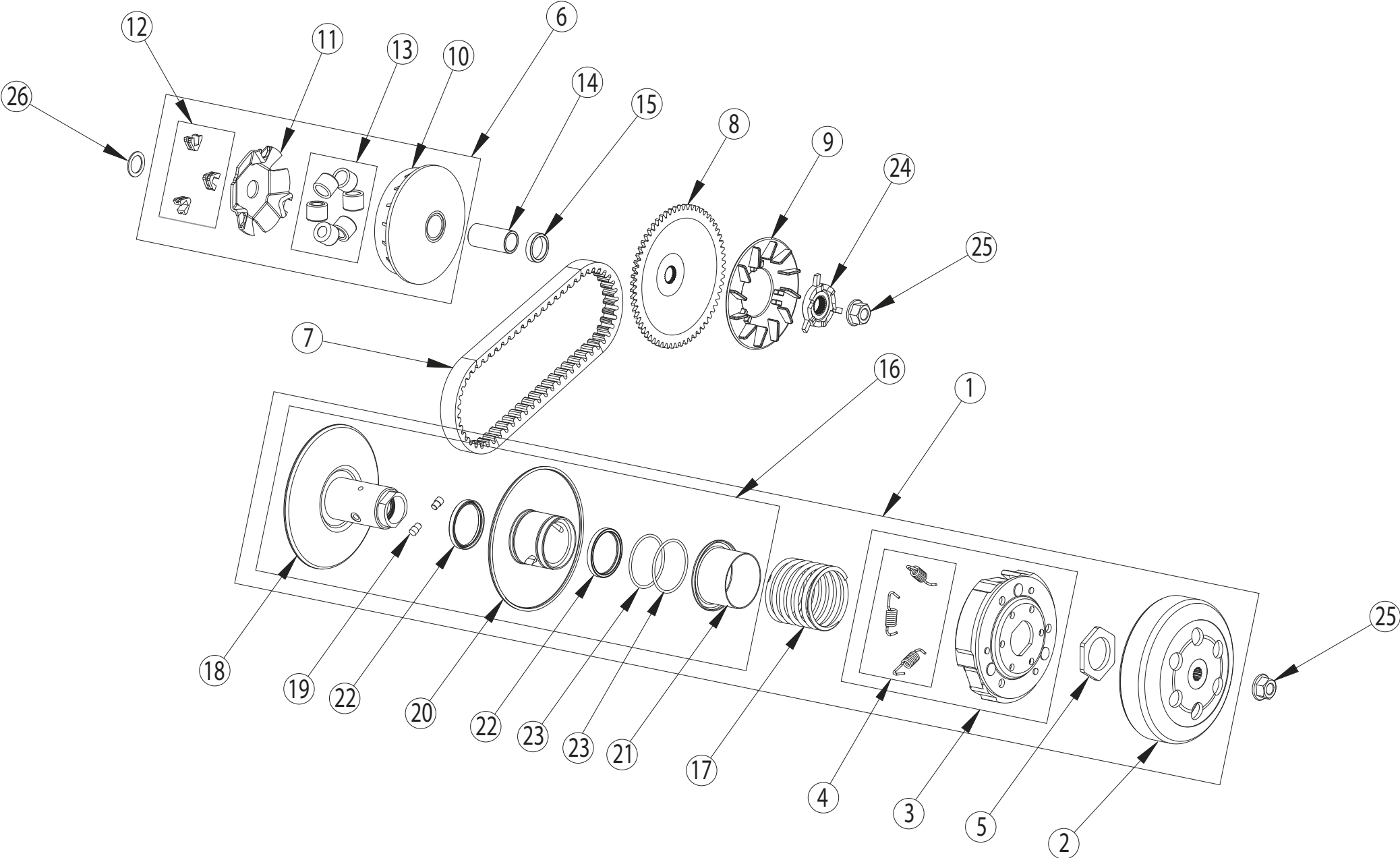




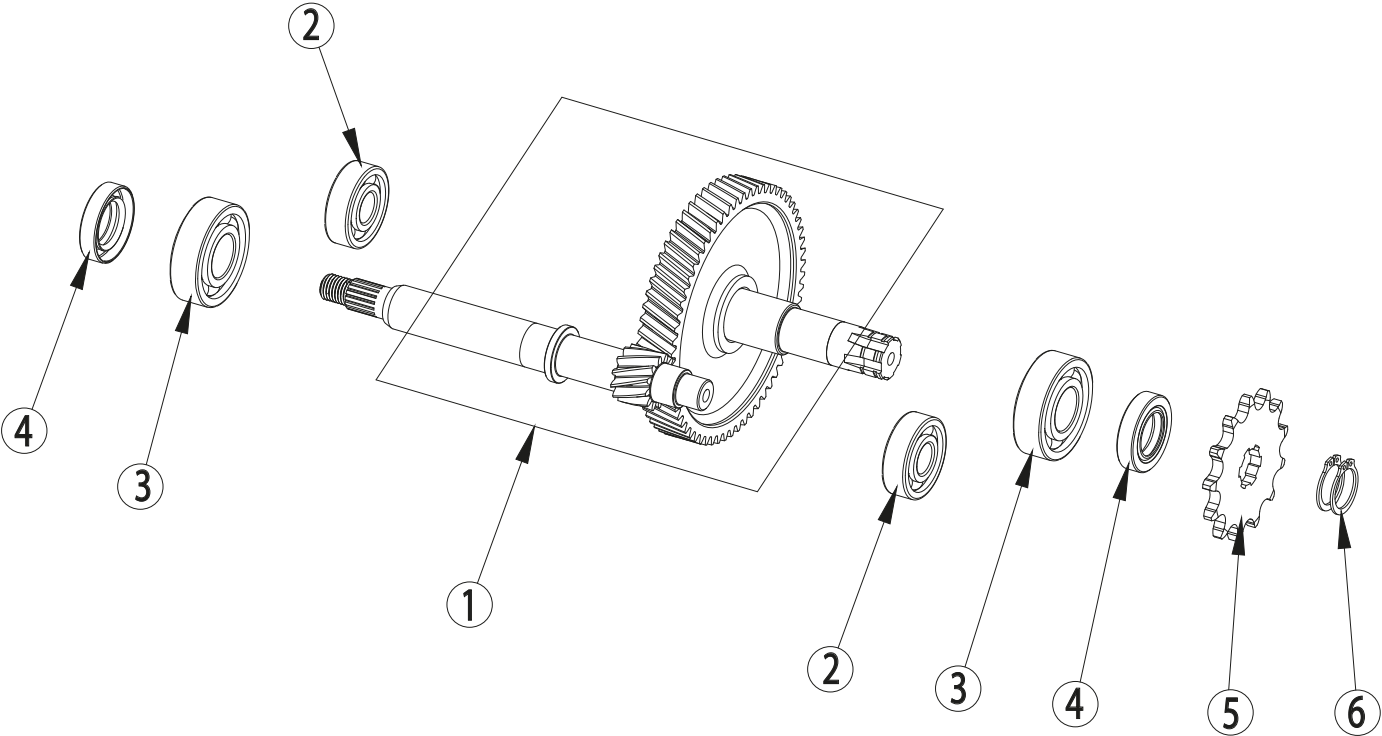
| Nº | Ref. | Descripción / Description | Qty. |
|----|-------------------|--|------|
| 1 | BB01-11485-00-810 | Casquillo centrador / Dowel pin | 2 |
| 2 | BB01-11550-01-810 | Cjto. tapa cárter variador (Negro) / Variator crankcase cover assy. (Black) * | 1 |
| 2 | BB01-11550-11-810 | Cjto. tapa cárter variador (Aluminio) / Variator crankcase cover assy. (Aluminium) * | 1 |
| 3 | BB01-11551-01-810 | Tapa cárter variador (Negro) / Variator crankcase cover (Black) | 1 |
| 3 | BB01-11551-11-810 | Tapa cárter variador (Aluminio) / Variator crankcase cover (Aluminium) | 1 |
| 4 | BB01-19391-00-810 | Casquillo bendix / Bendix spacer | 1 |
| 5 | BB01-19420-00-810 | Pedal arranque / Kickstarter | 1 |
| 6 | BB01-19432-00-810 | Eje pedal arranque / Kickstarter axis | 1 |
| 7 | BB01-19435-00-810 | Arandela ajuste eje pedal arranque / Kickstarter axis washer | 1 |
| 8 | BB01-19437-00-810 | Goma tope pedal arranque / Kickstarter rubber | 1 |
| 9 | BB01-19438-00-810 | Clip goma tope eje pedal arranque / Kickstarter rubber clip | 1 |
| 10 | BB01-19441-00-810 | Muelle pedal arranque / Kickstarter spring | 1 |
| 11 | BB01-19452-00-810 | Piñón ataque arranque / Kickstarter gear | 1 |
| 12 | BB01-19485-00-810 | Casquillo centrador muelle arranque / Kickstarter spring dowel pin | 1 |
| 13 | BB01-19491-00-810 | Casquillo pedal arranque / Kickstarter spacer | 1 |
| 14 | 00280068 | Tornillo M6x25 Allen / Allen Screw M6x25 (25 unit/kit) | 1 |
| 15 | 00280234 | Tornillo M6x35 Allen / Allen Screw M6x35 (25 unit/kit) | 1 |
| 16 | 00280257 | Anillo seguridad Ø14 / Lock ring Ø14 (25 unit/kit) | 1 |

OBSERVACIONES / REMARKS

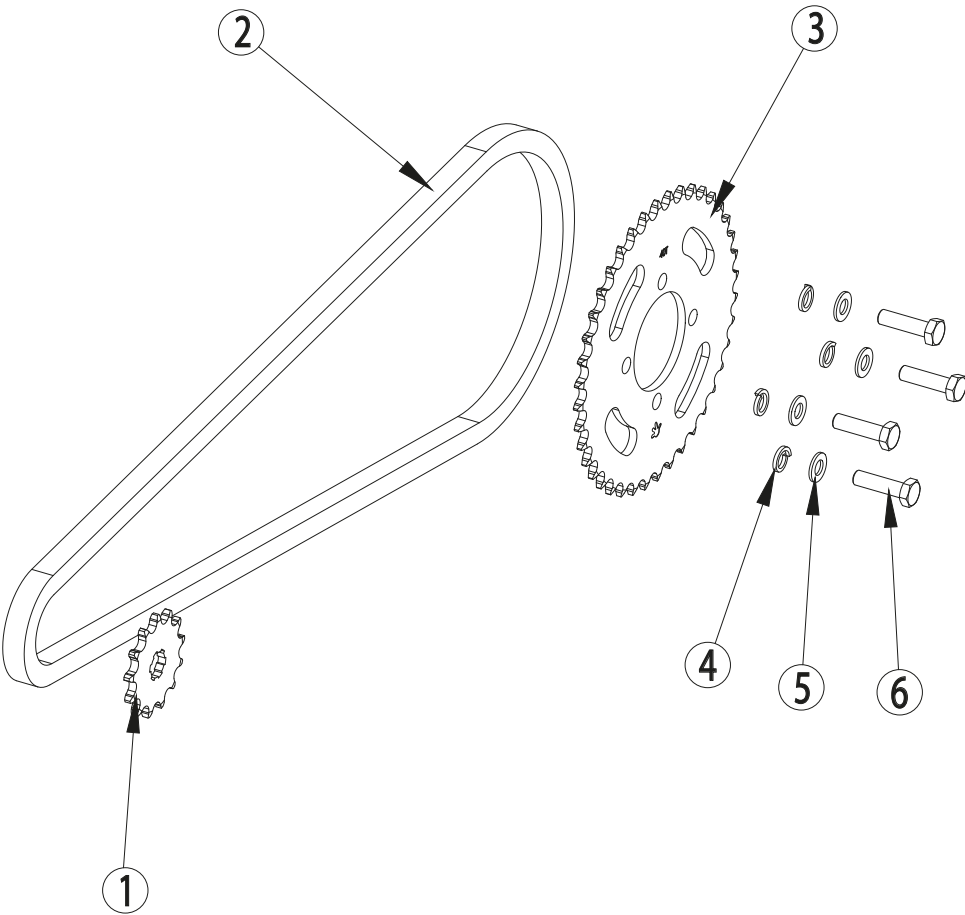
* La pieza nº2 no incluye la pieza nº1 en el conjunto de piezas. / Part nº2 do not include part nº1 in part assembly.



17

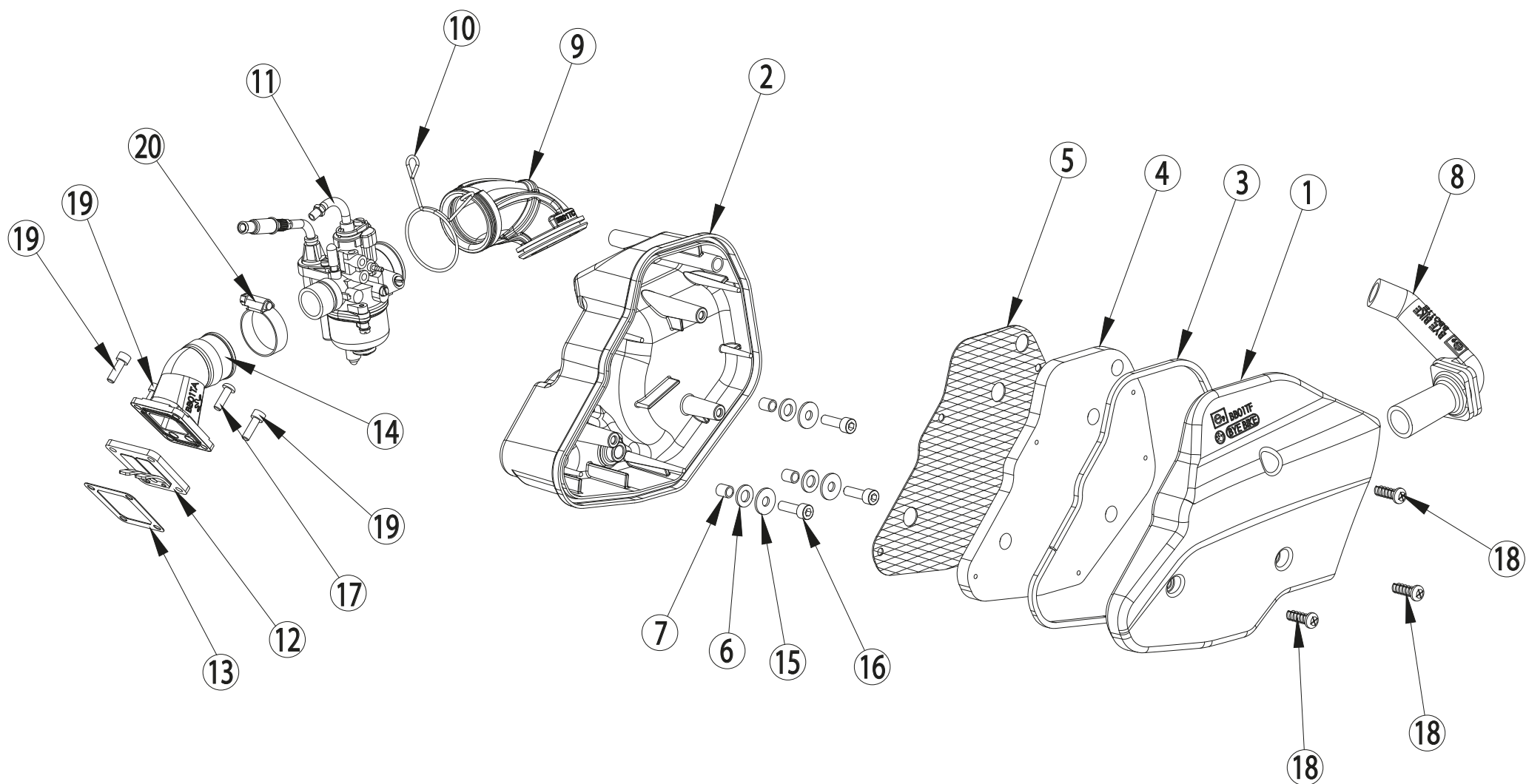


19

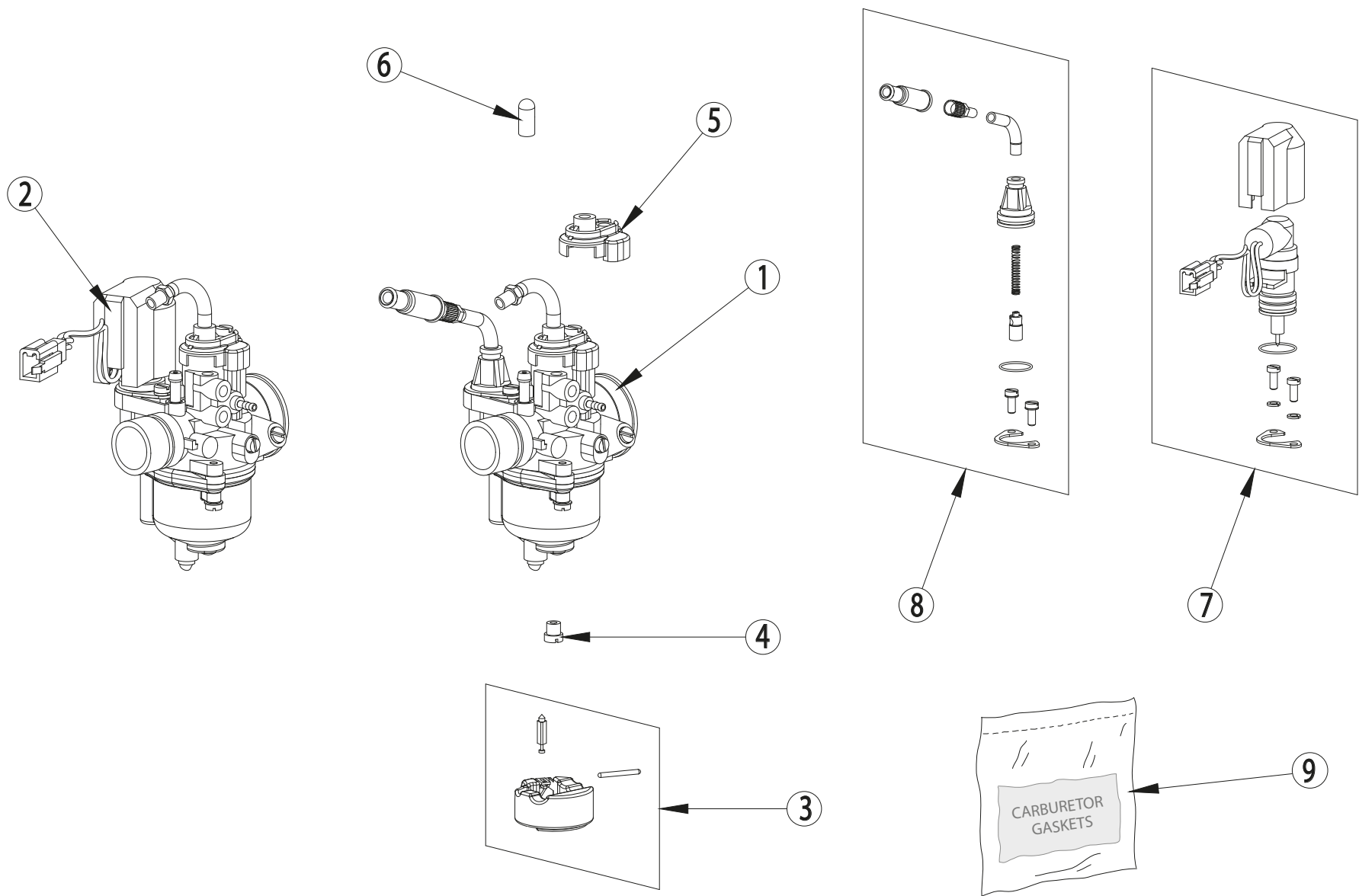


21

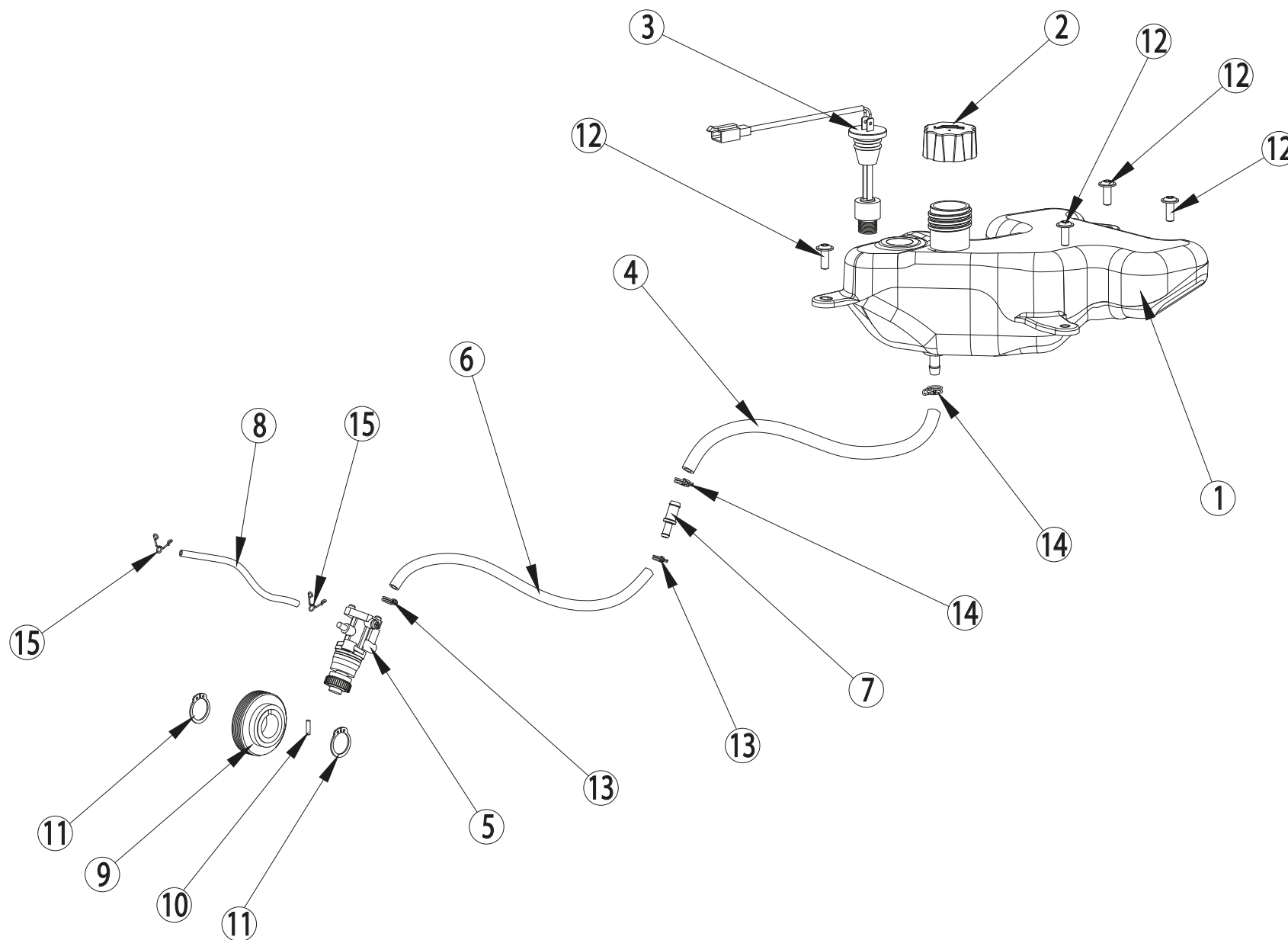




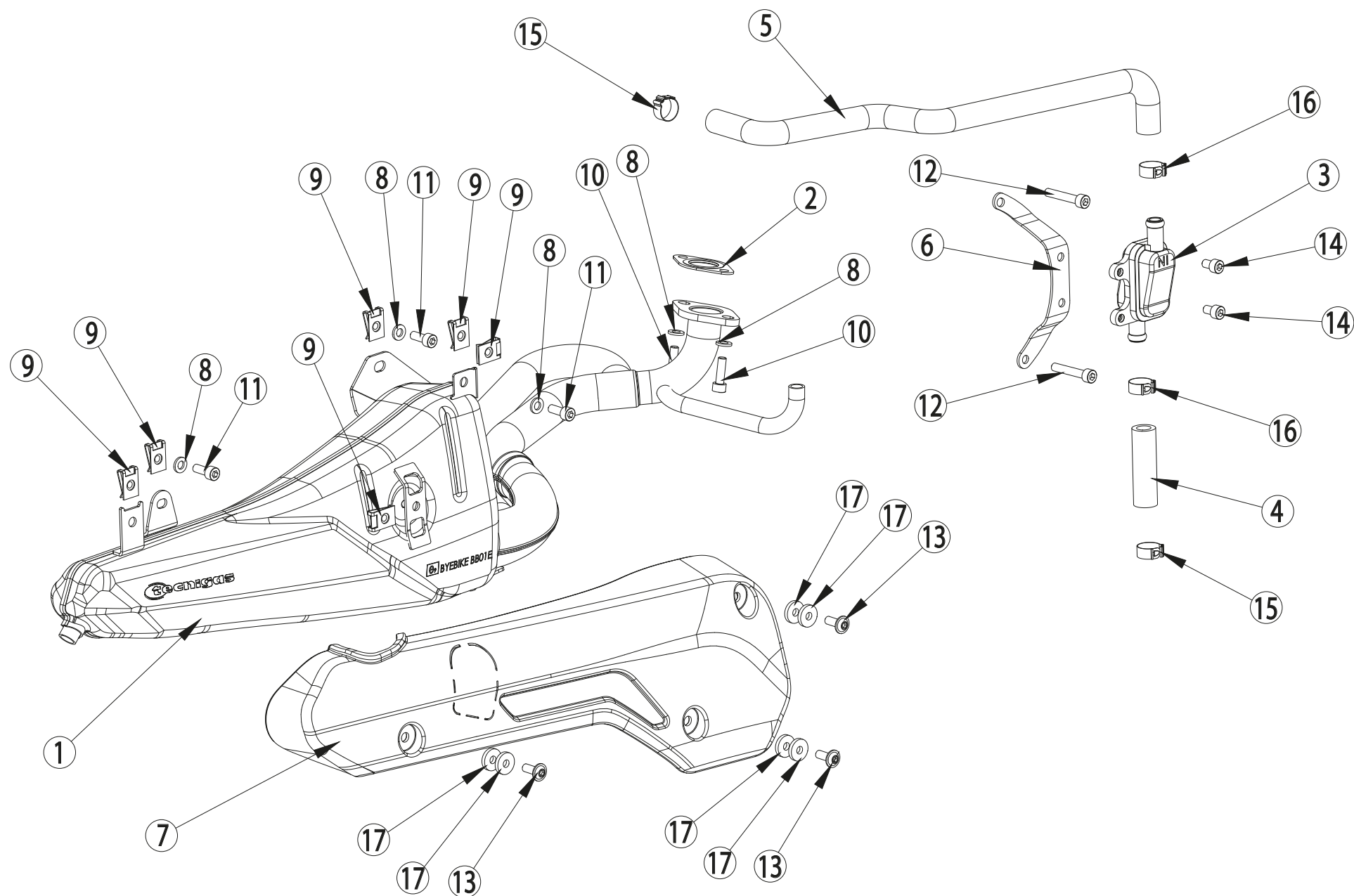
25



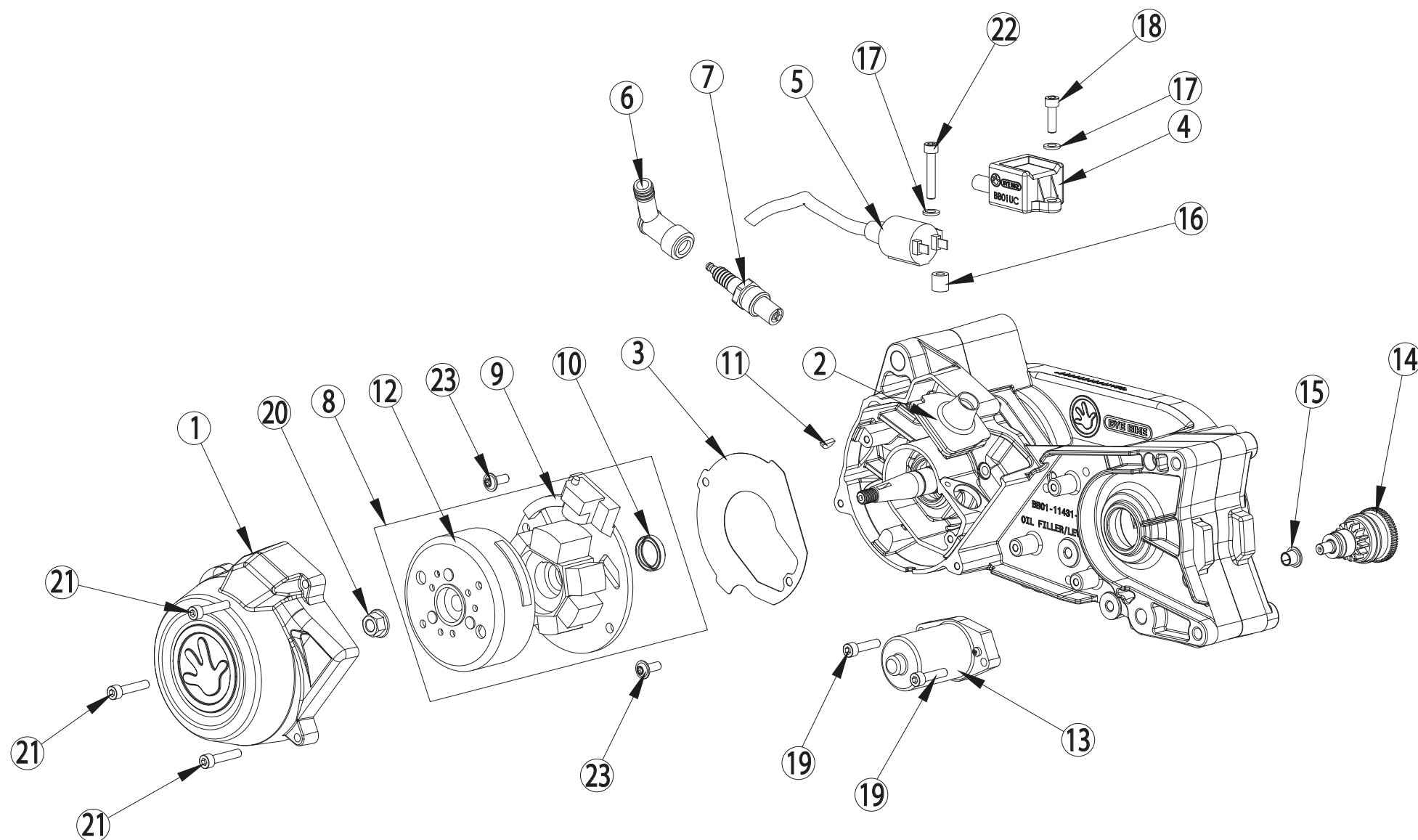
27



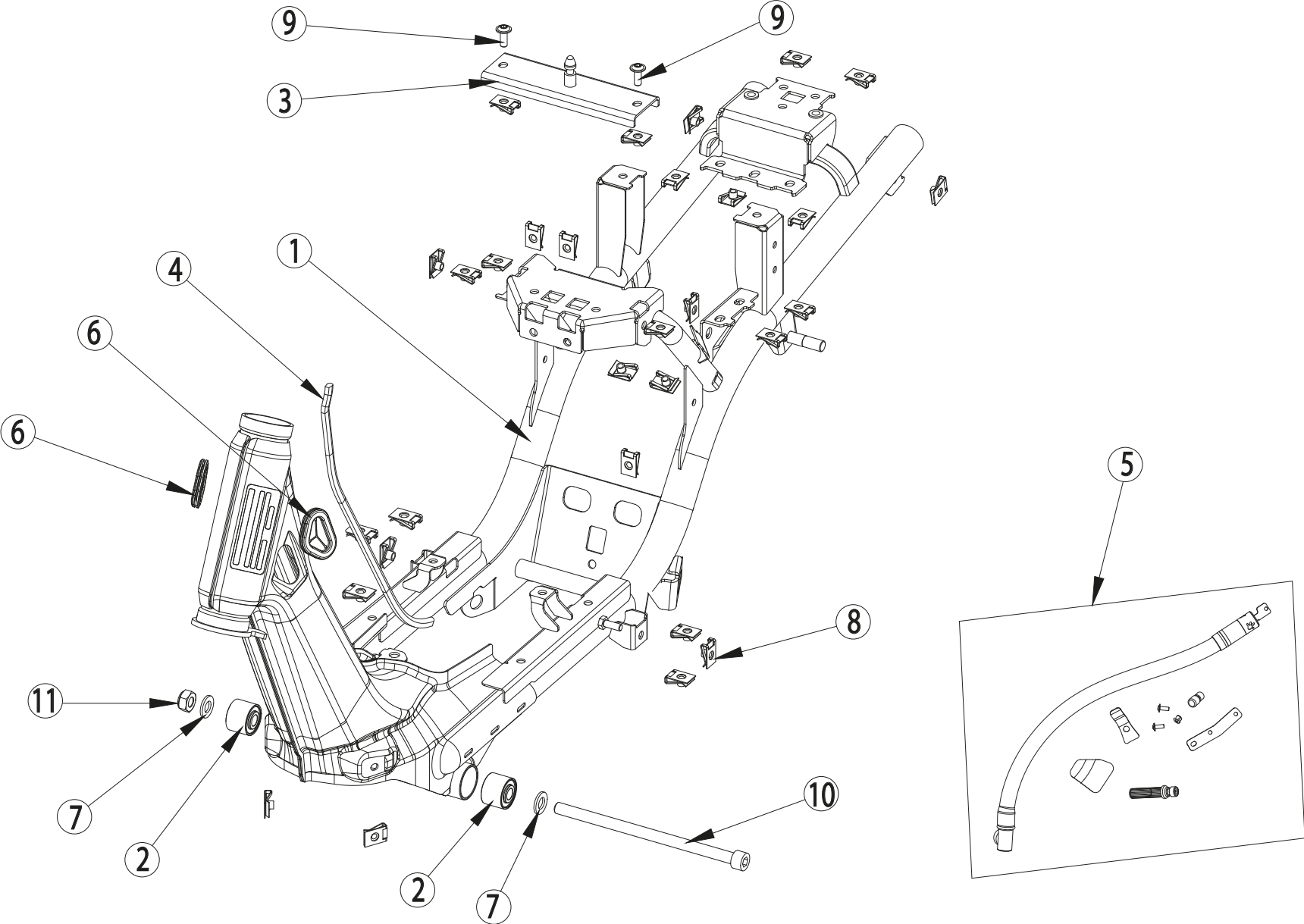
29



31



[illegible]





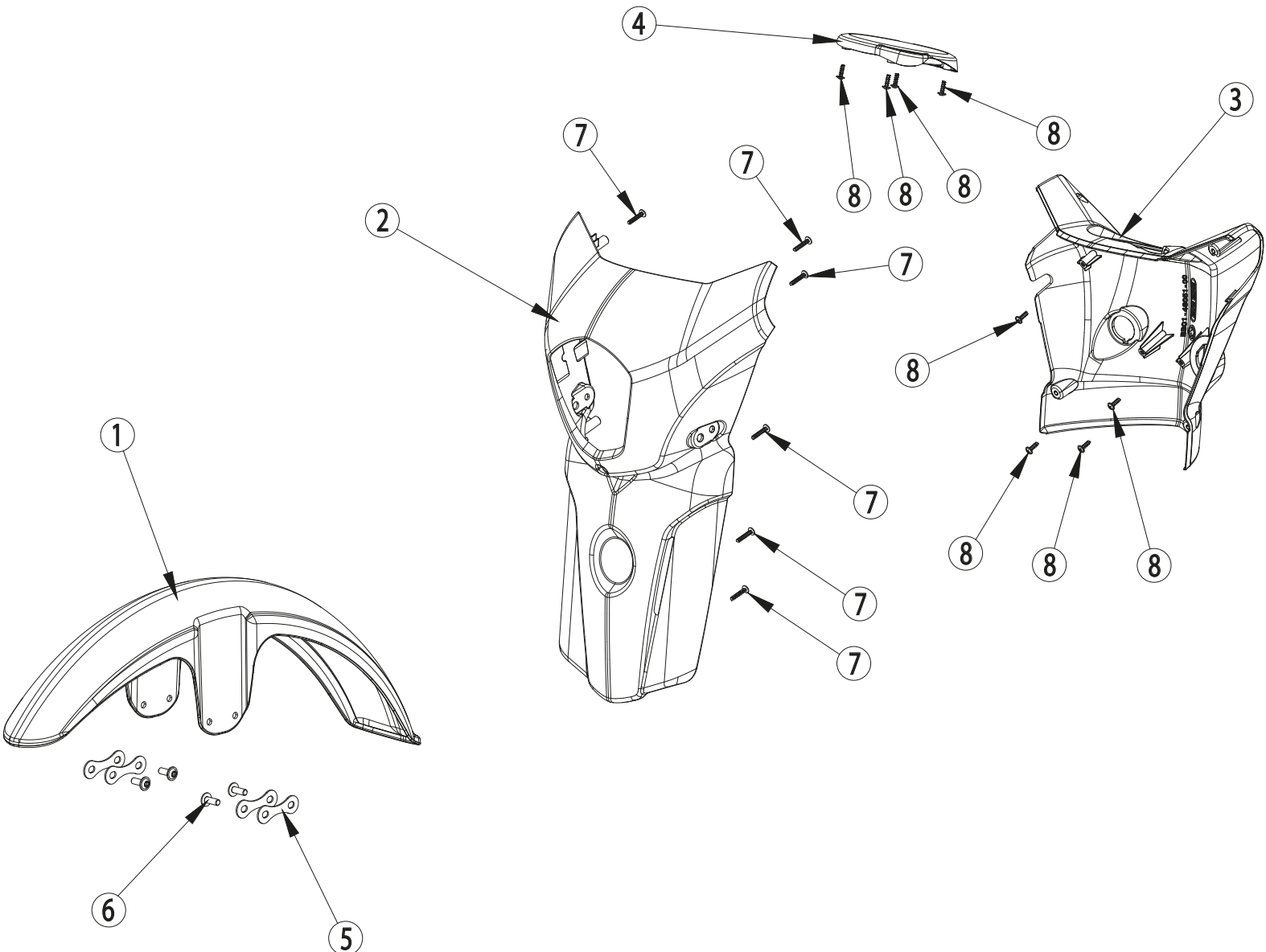
| Nº | Ref. | Descripción / Description | Qty. |
|----|-------------------|---|------|
| 1 | BB01-41010-00-810 | Cjto. bastidor / Frame assy. * | 1 |
| 2 | BB01-41718-00-810 | Silentblock motor / Silentblock engine | 2 |
| 3 | BB01-41790-00-810 | Cjto. puente sillin motor / Seat bracket | 1 |
| 4 | BB01-45655-00-810 | Bordón embellecedor 335mm / Frame trim 335mm | 1 |
| 5 | BB01-49210-00-810 | Cjto. antirrobo / Anti-theft assy. | - |
| 6 | BB01-81081-00-810 | Pasacables inst. electrica / Rubber grommet frame | 2 |
| 7 | 00280012 | Arandela M10 / Washer M10 (50 units/kit) | 1 |
| 8 | 00280019 | Tuerca rapida M6 / Snap nut M6 (10 units/kit) | 1 |
| 9 | 00280241 | Tornillo M6x16 ULS+ar / ULS+ar screw M6x16 (25 units/kit) | 1 |
| 10 | 00280252 | Tornillo M10x180 allen / Allen screw M10x180 (5 units/kit) | 1 |
| 11 | 00280280 | Tuerca M10 autoblocante / Self-locking nut M10 (25 units/kit) | 1 |

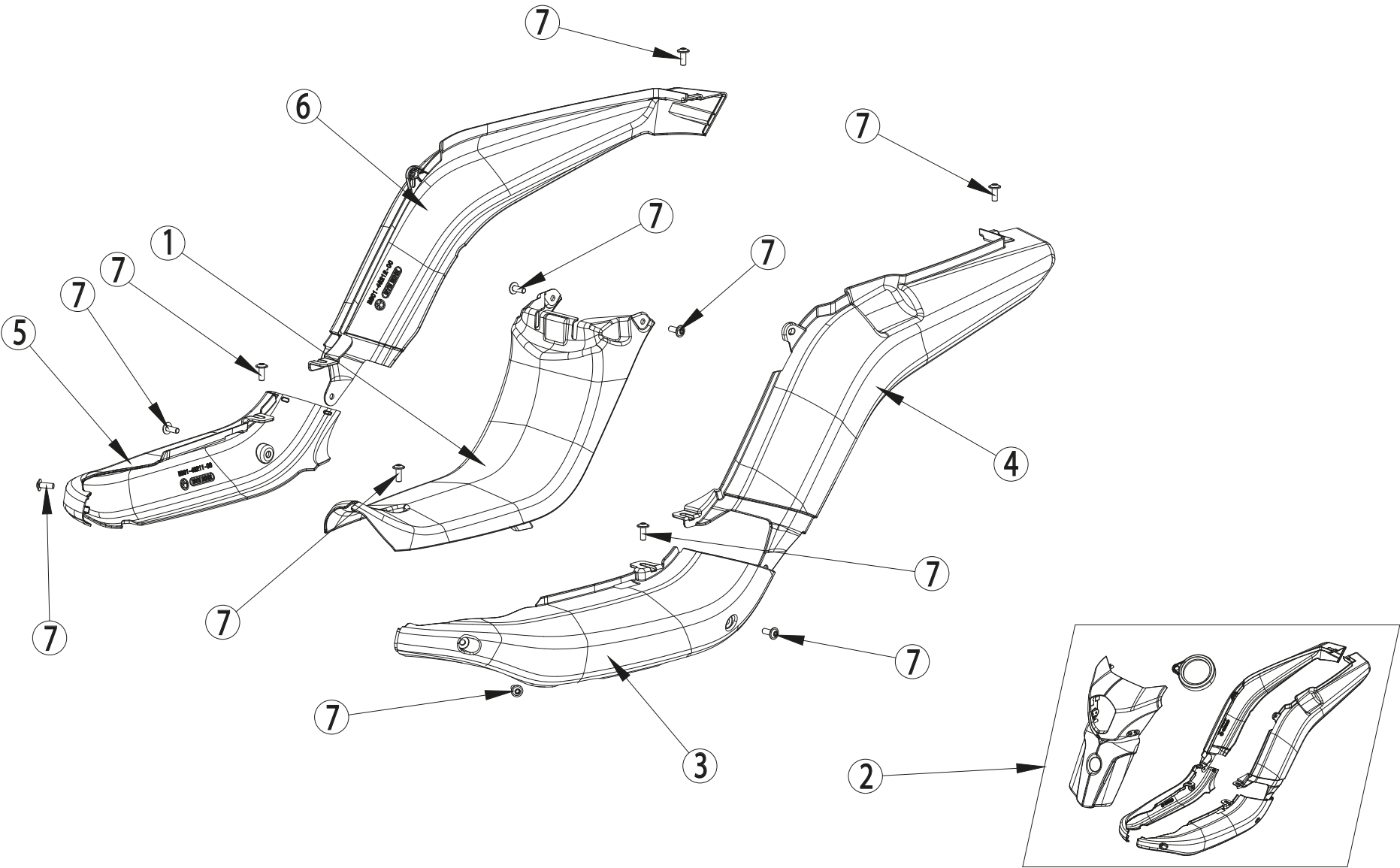
OBSERVACIONES / REMARKS

* La pieza nº1 incluye pistas de dirección (x2), placa de fabricante, adhesivo antimanipulación, marcaje VIN, silent-blocks (x2) y tuercas remachables (x4).

Part nº1 include steering bearing (x2), manufacture plate, antitampering stick, VIN mark, silent-blocks (x2) and ribet nut (x4).

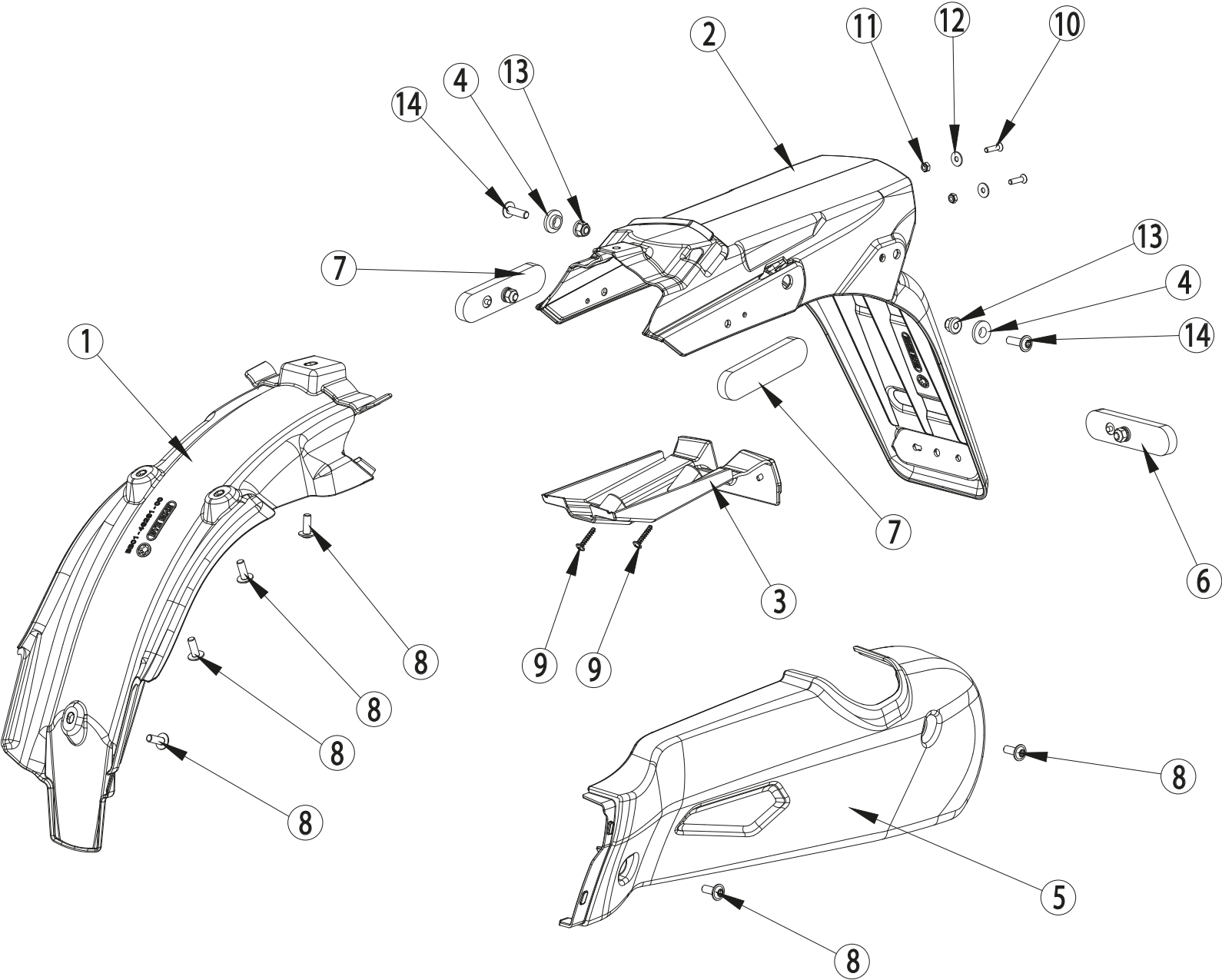
* La pieza nº5 esta disponible desde *UBJBB1101F0000055* / Part nº5 available from *UBJBB1101F0000055*

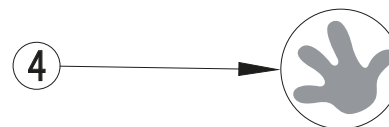
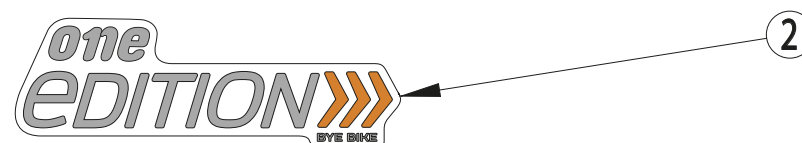
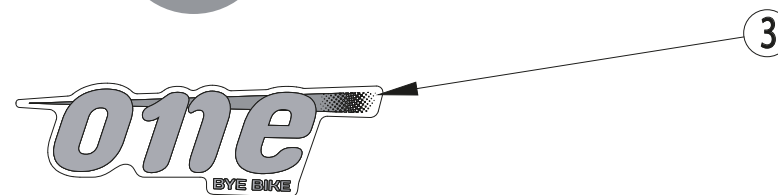
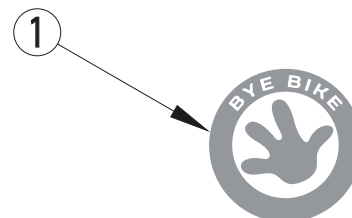
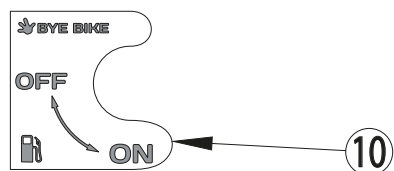
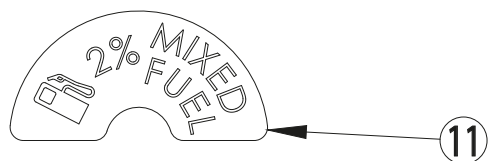
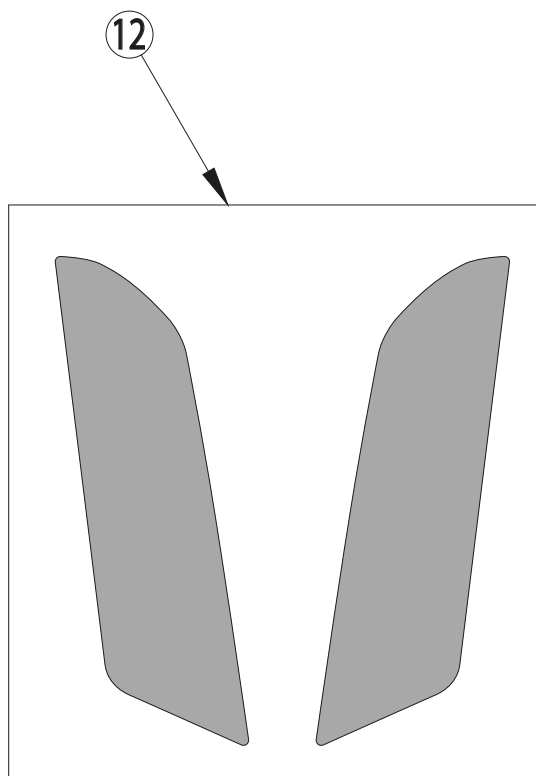


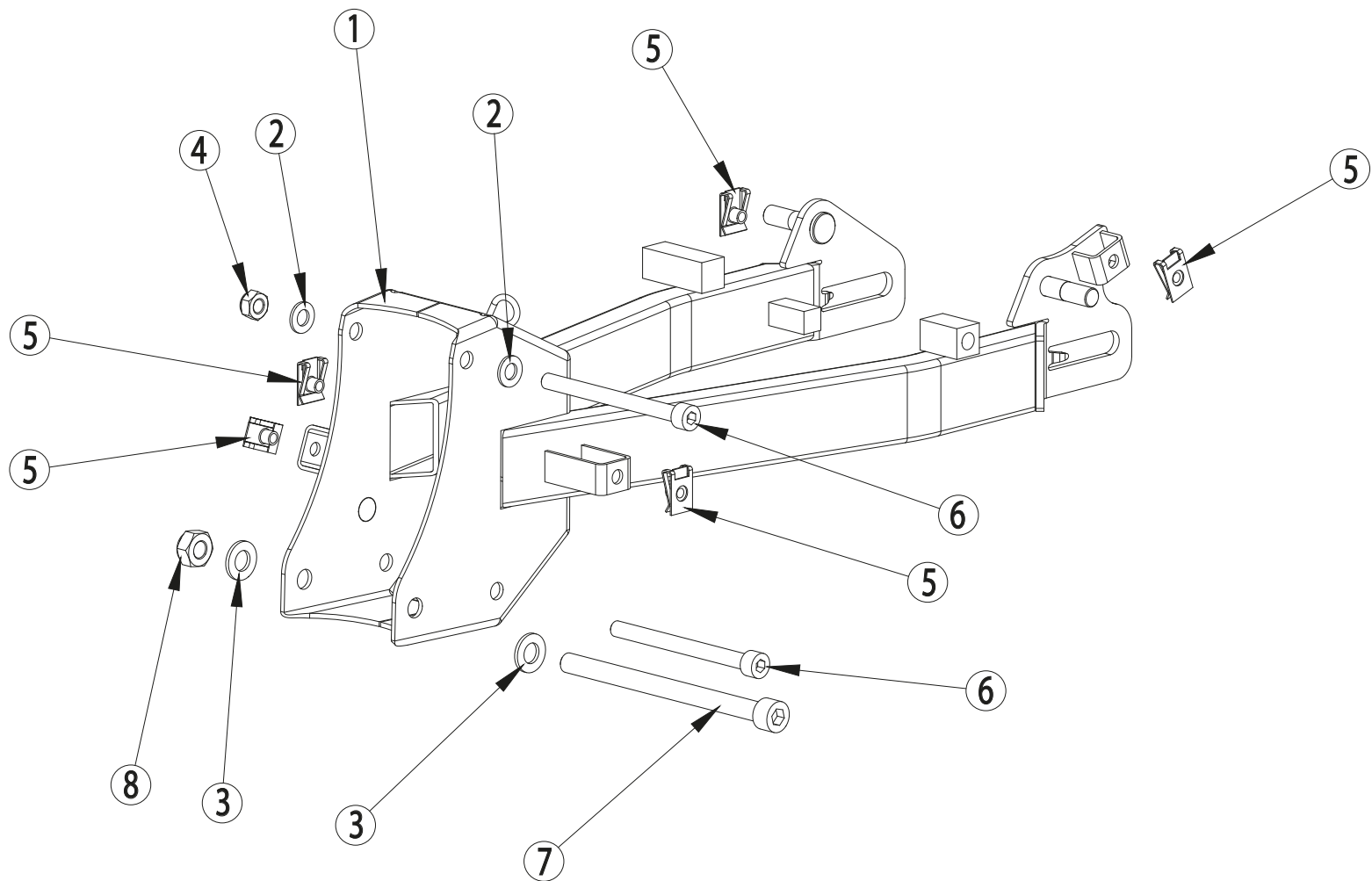




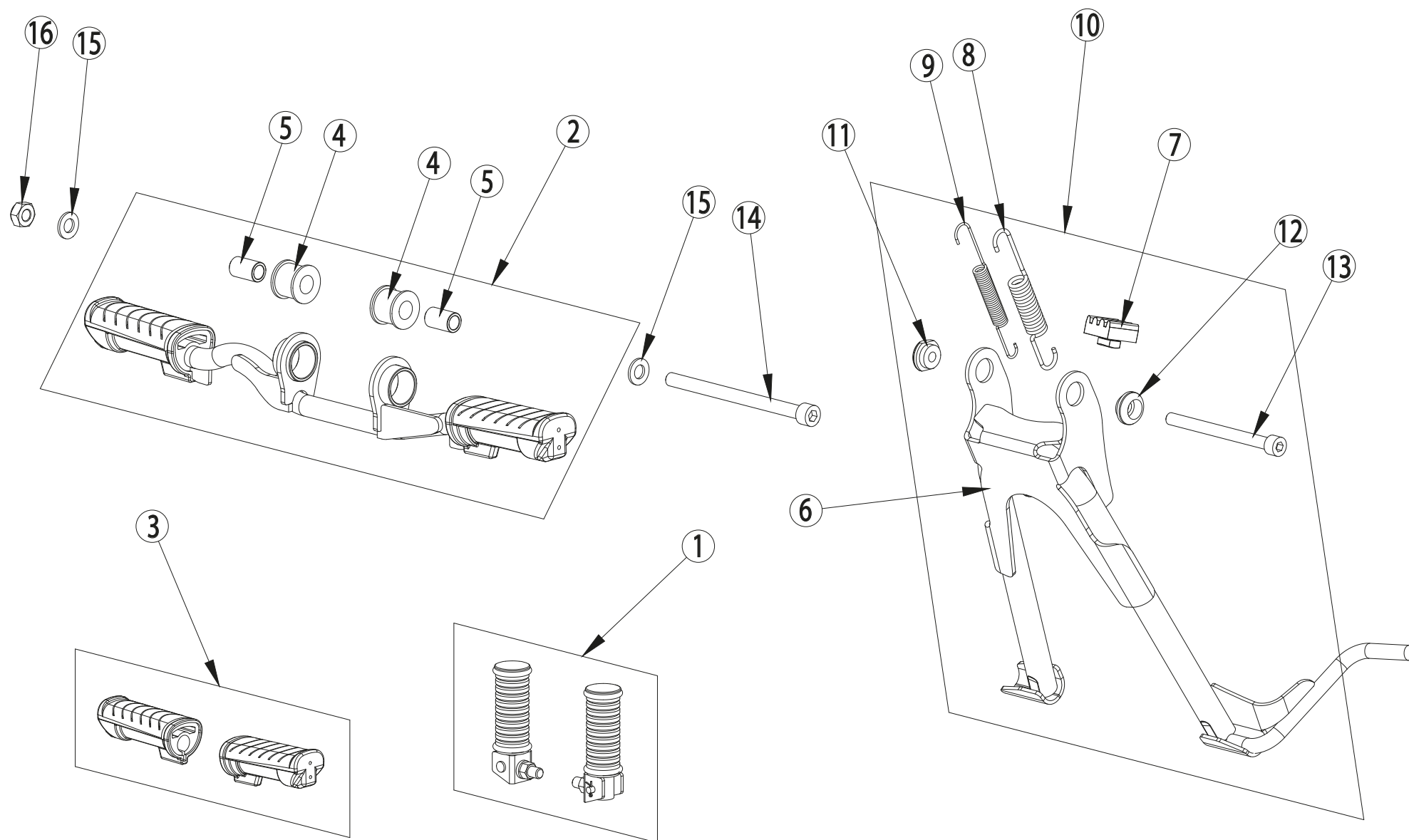
| Nº | Ref. | Descripción / Description | Qty. |
|----|-------------------|--|------|
| 1 | BB01-46171-00-810 | Tapa central / Central cover | 1 |
| 2 | BB01-46190-00-810 | Cjto. tapas carenado (Metallic midnight) / Body cover set (Metallic midnight) | 1 |
| 2 | BB01-46190-10-810 | Cjto. tapas carenado (PP blanco) / Body cover set (White PP) | 1 |
| 2 | BB01-46190-20-810 | Cjto. tapas carenado (PP rojo) / Body cover set (Red PP) | 1 |
| 2 | BB01-46190-40-810 | Cjto. tapas carenado (Deep titanium) / Body cover set (Deep titanium) | 1 |
| 2 | BB01-46190-50-810 | Cjto. tapas carenado (Pearl white) / Body cover set (Pearl white) | 1 |
| 3 | BB01-46201-00-810 | Tapa lateral izq. delantera (Negro brillante) / Front left side cover (Metallic midnight) | 1 |
| 3 | BB01-46201-10-810 | Tapa lateral izq. delantera (PP blanco) / Front left side cover (White PP) | 1 |
| 3 | BB01-46201-20-810 | Tapa lateral izq. delantera (PP rojo) / Front left side cover (Red PP) | 1 |
| 3 | BB01-46201-40-810 | Tapa lateral izq. delantera (Gris mate) / Front left side cover (Deep titanium) | 1 |
| 3 | BB01-46201-50-810 | Tapa lateral izq. delantera (Blanco mate) / Front left side cover (Pearl white) | 1 |
| 4 | BB01-46202-00-810 | Tapa lateral izq. trasera (Negro brillante) / Rear left side cover (Metallic midnight) | 1 |
| 4 | BB01-46202-10-810 | Tapa lateral izq. trasera (PP blanco) / Rear left side cover (White PP) | 1 |
| 4 | BB01-46202-20-810 | Tapa lateral izq. trasera (PP rojo) / Rear left side cover (Red PP) | 1 |
| 4 | BB01-46202-40-810 | Tapa lateral izq. trasera (Gris mate) / Rear left side cover (Deep titanium) | 1 |
| 4 | BB01-46202-50-810 | Tapa lateral izq. trasera (Blanco mate) / Rear left side cover (Pearl white) | 1 |
| 5 | BB01-46211-00-810 | Tapa lateral drcha. delantera (Negro brillante) / Front right side cover (Metallic midnight) | 1 |
| 5 | BB01-46211-10-810 | Tapa lateral drcha. delantera (PP blanco) / Front right side cover (White PP) | 1 |
| 5 | BB01-46211-20-810 | Tapa lateral drcha. delantera (PP rojo) / Front right side cover (Red PP) | 1 |
| 5 | BB01-46211-40-810 | Tapa lateral drcha. delantera (Gris mate) / Front right side cover (Deep titanium) | 1 |
| 5 | BB01-46211-50-810 | Tapa lateral drcha. delantera (Blanco mate) / Front right side cover (Pearl white) | 1 |
| 6 | BB01-46212-00-810 | Tapa lateral drcha. trasera (Negro brillante) / Rear right side cover (Metallic midnight) | 1 |
| 6 | BB01-46212-10-810 | Tapa lateral drcha. trasera (PP blanco) / Rear right side cover (White PP) | 1 |
| 6 | BB01-46212-20-810 | Tapa lateral drcha. trasera (PP rojo) / Rear right side cover (Red PP) | 1 |
| 6 | BB01-46212-40-810 | Tapa lateral drcha. trasera (Gris mate) / Rear right side cover (Deep titanium) | 1 |
| 6 | BB01-46212-50-810 | Tapa lateral drcha. trasera (Blanco mate) / Rear right side cover (Pearl white) | 1 |
| 7 | 00280241 | Tornillo M6x16 ULS+ar / ULS+ar screw M6x16 (25 units/kit) | 1 |
| | | | |
| | | | |
| | | | |
| | | | |
| | | | |
| | | | |

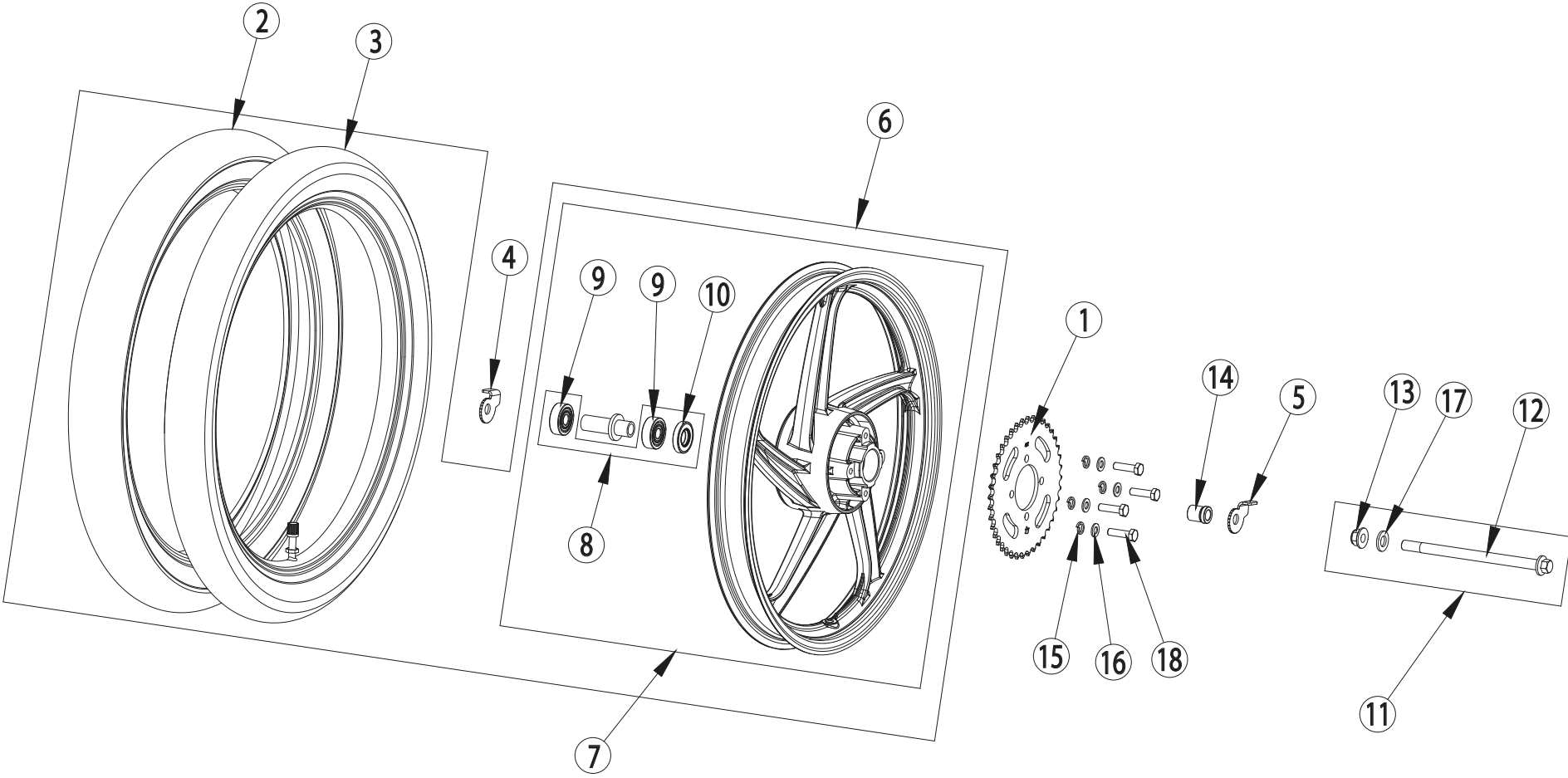




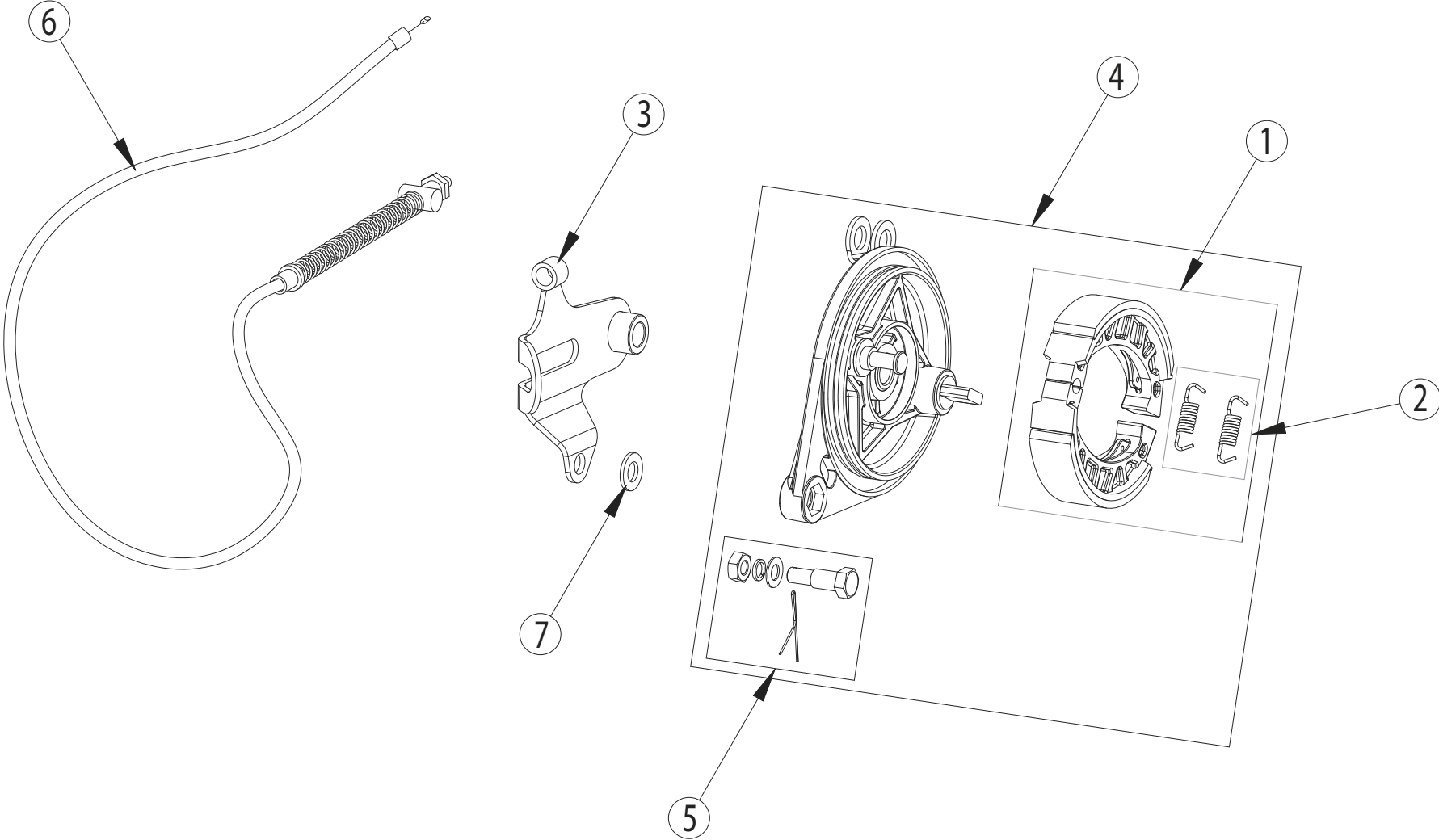


[illegible]

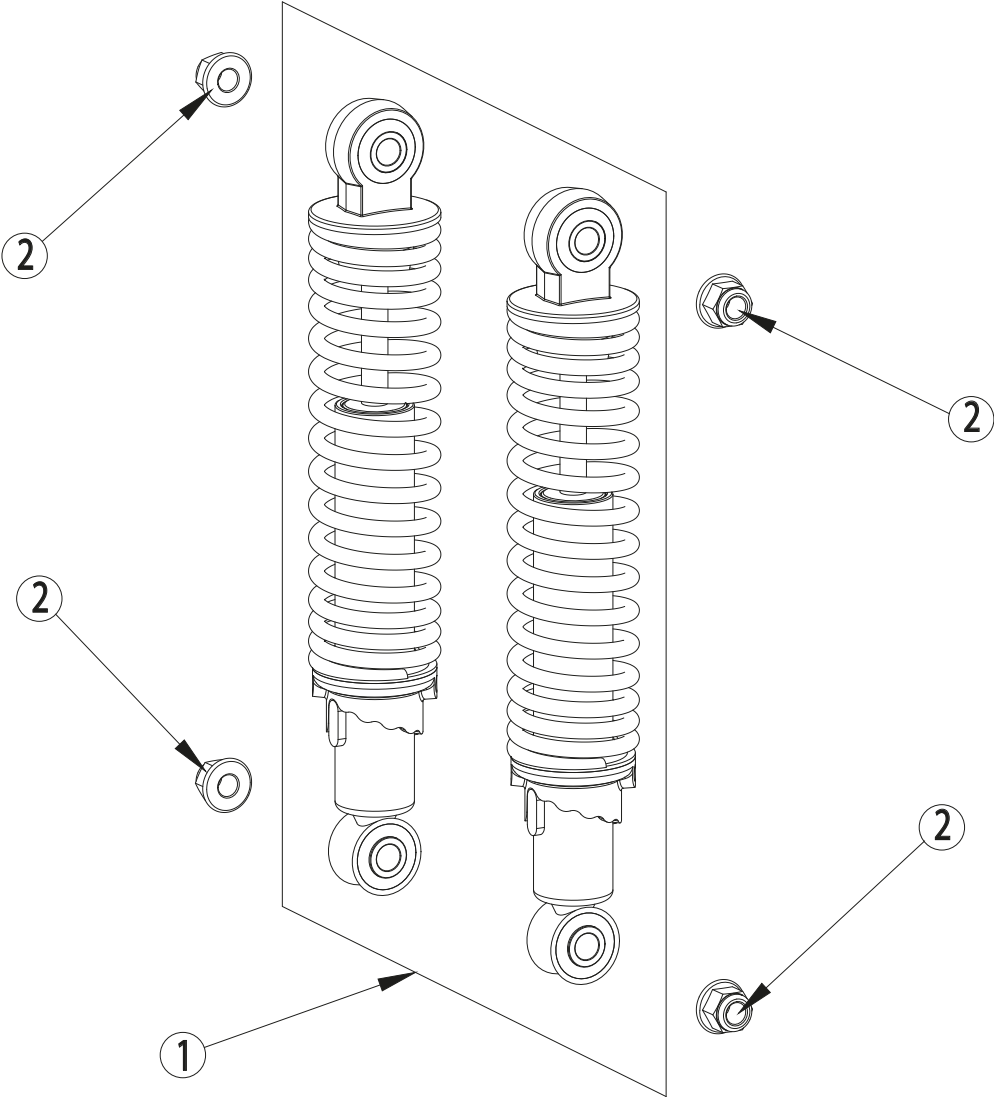




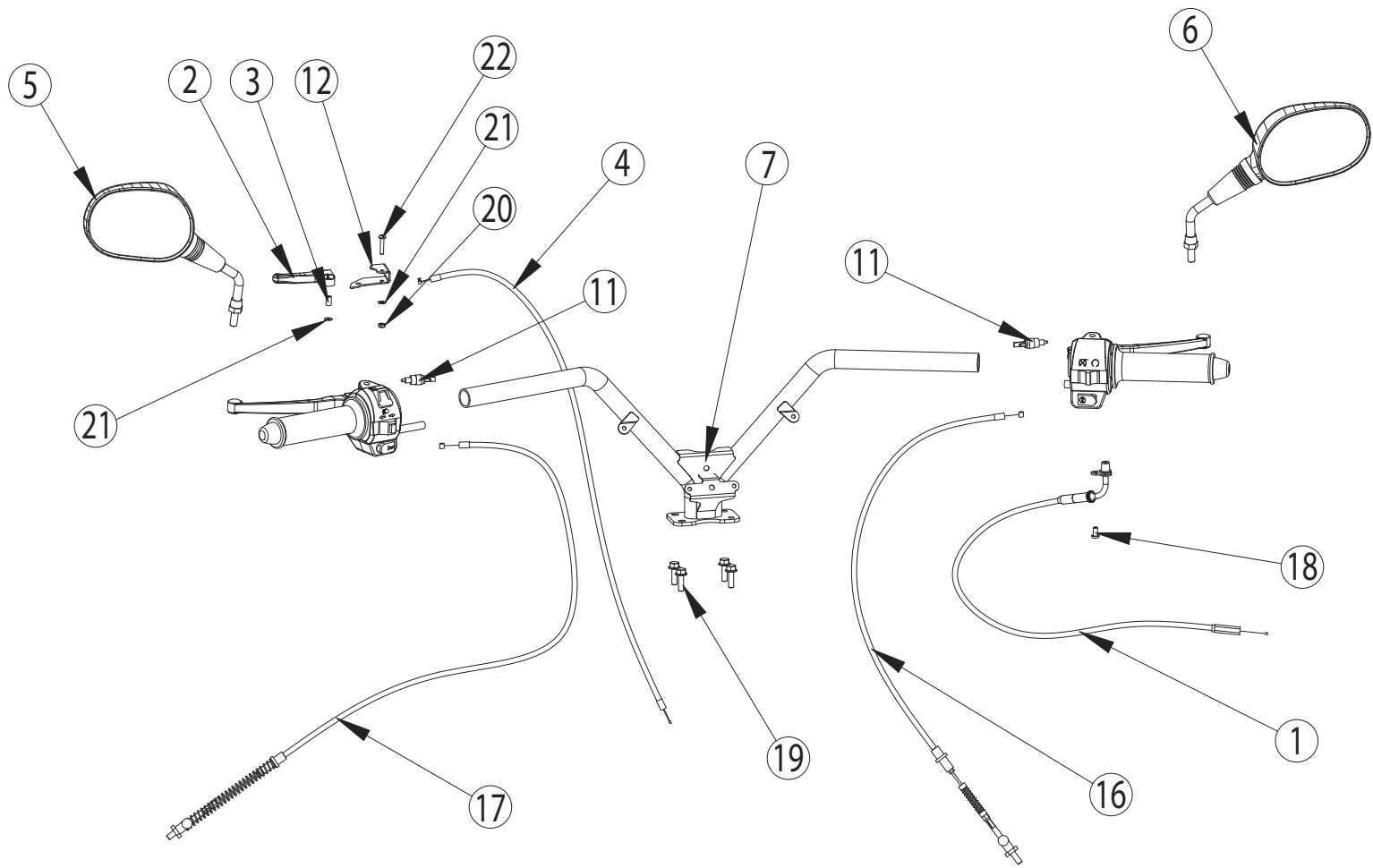
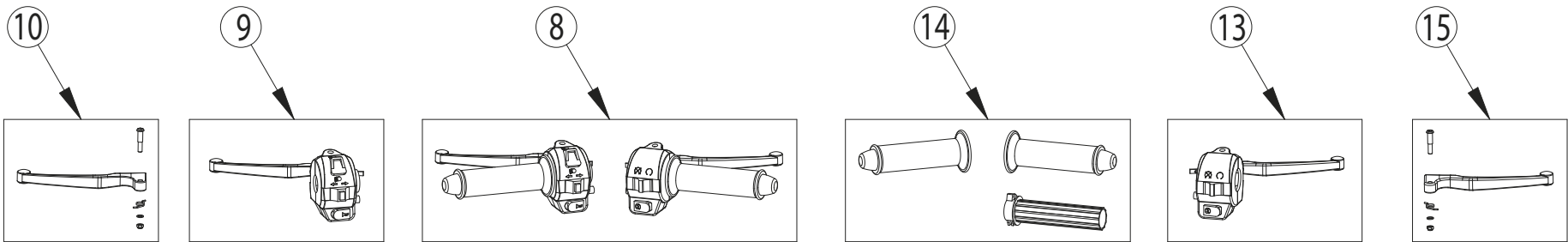
49



51

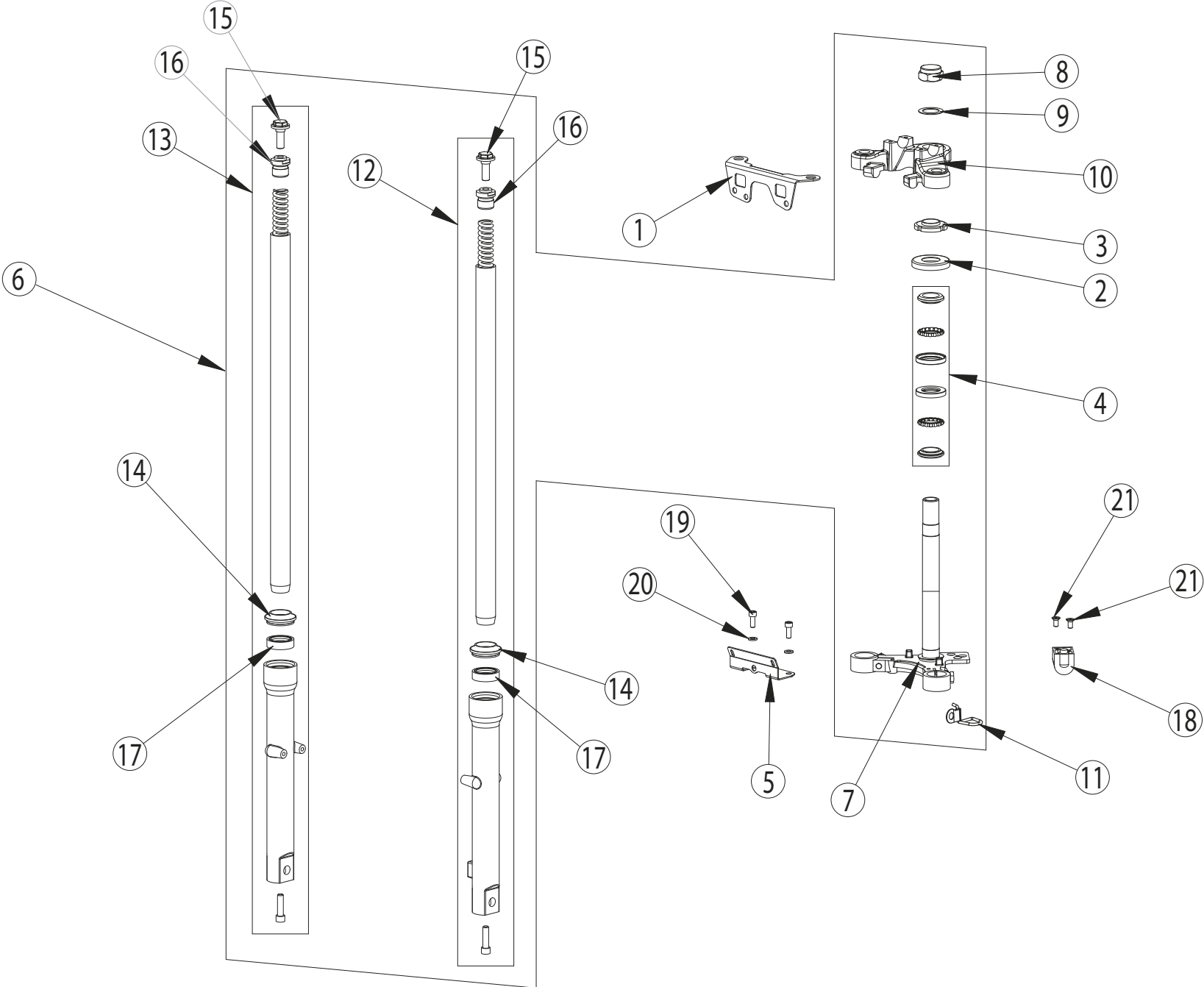


53





| Nº | Ref. | Descripción / Description | Qty. |
|----|-------------------|--|------|
| 1 | BB01-15150-00-810 | Cable mando gas / Throttle cable | 1 |
| 2 | BB01-15485-00-810 | Maneta estarter / Starter lever | 1 |
| 3 | BB01-15488-00-810 | Casq. maneta estarter / Starter lever bush | 1 |
| 4 | BB01-15490-00-810 | Cable estarter / Starter cable | 1 |
| 5 | BB01-45510-00-810 | Retrovisor izquierdo / Left mirror | 1 |
| 6 | BB01-45540-00-810 | Retrovisor derecho / Right mirror | 1 |
| 7 | BB01-51210-00-810 | Manillar / Handlebar | 1 |
| 8 | BB01-51310-00-810 | Kit mandos (der.+izq.) / Handlebar switches (left+right) | 1 |
| 9 | BB01-51320-00-810 | Cjto. mandos izqdo. / Left switches assy. | 1 |
| 10 | BB01-51321-00-810 | Maneta izquierda / Left lever | 1 |
| 11 | BB01-51325-00-810 | Sensor freno delantero / Front brake cable | 2 |
| 12 | BB01-51331-00-810 | Soporte estarter / Starter support | 1 |
| 13 | BB01-51340-00-810 | Cjto. mandos drcho. / Right switches assy. | 1 |
| 14 | BB01-51345-00-810 | Kit puño gas + gomas D+I / Throttle twist grip + rubber grips (left+right) kit | 1 |
| 15 | BB01-51351-00-810 | Maneta derecha / Right lever | 1 |
| 16 | BB01-54580-00-810 | Cable freno delantero / Front brake cable | 1 |
| 17 | BB01-64580-00-810 | Cable freno trasero / Rear brake cable | 1 |
| 18 | 00280247 | Tornillo M5x10 ULS / ULS screw M5x10 (50 units/kit) | 1 |
| 19 | 00280260 | Tornillo M6x20 Hexagonal / Hexagonal screw M6x20 (50 units/kit) | 1 |
| 20 | 00280272 | Tuerca M4 autoblocante / Self-locking nut M4 (50 units/kit) | 1 |
| 21 | 00280305 | Arandela M4 / Washer M4 (25 units/kit) (50 units/kit) | 1 |
| 22 | 00280307 | Tornillo M4x20 Phillips / Phillips screw M4x20 (50 units/kit) | 1 |

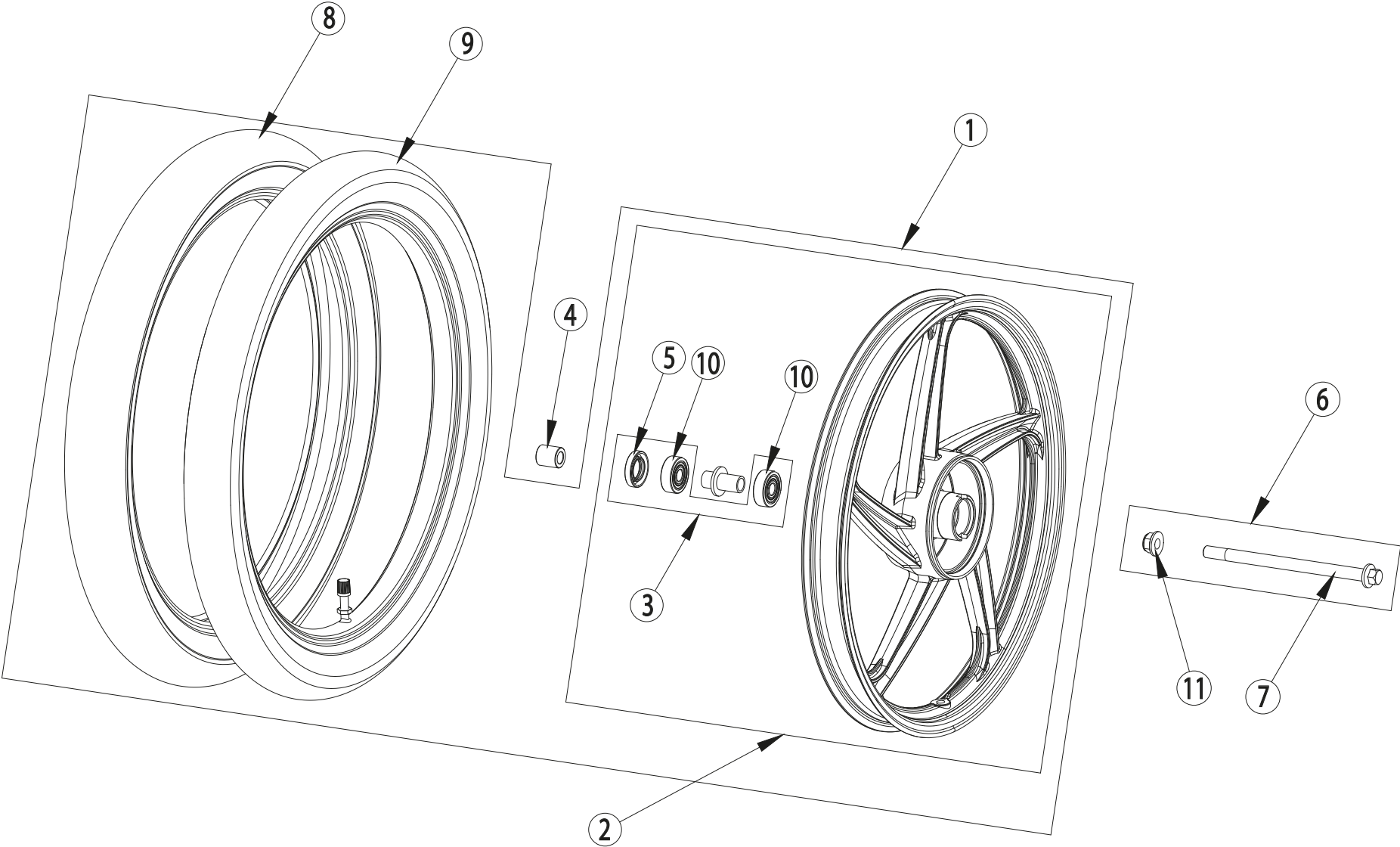




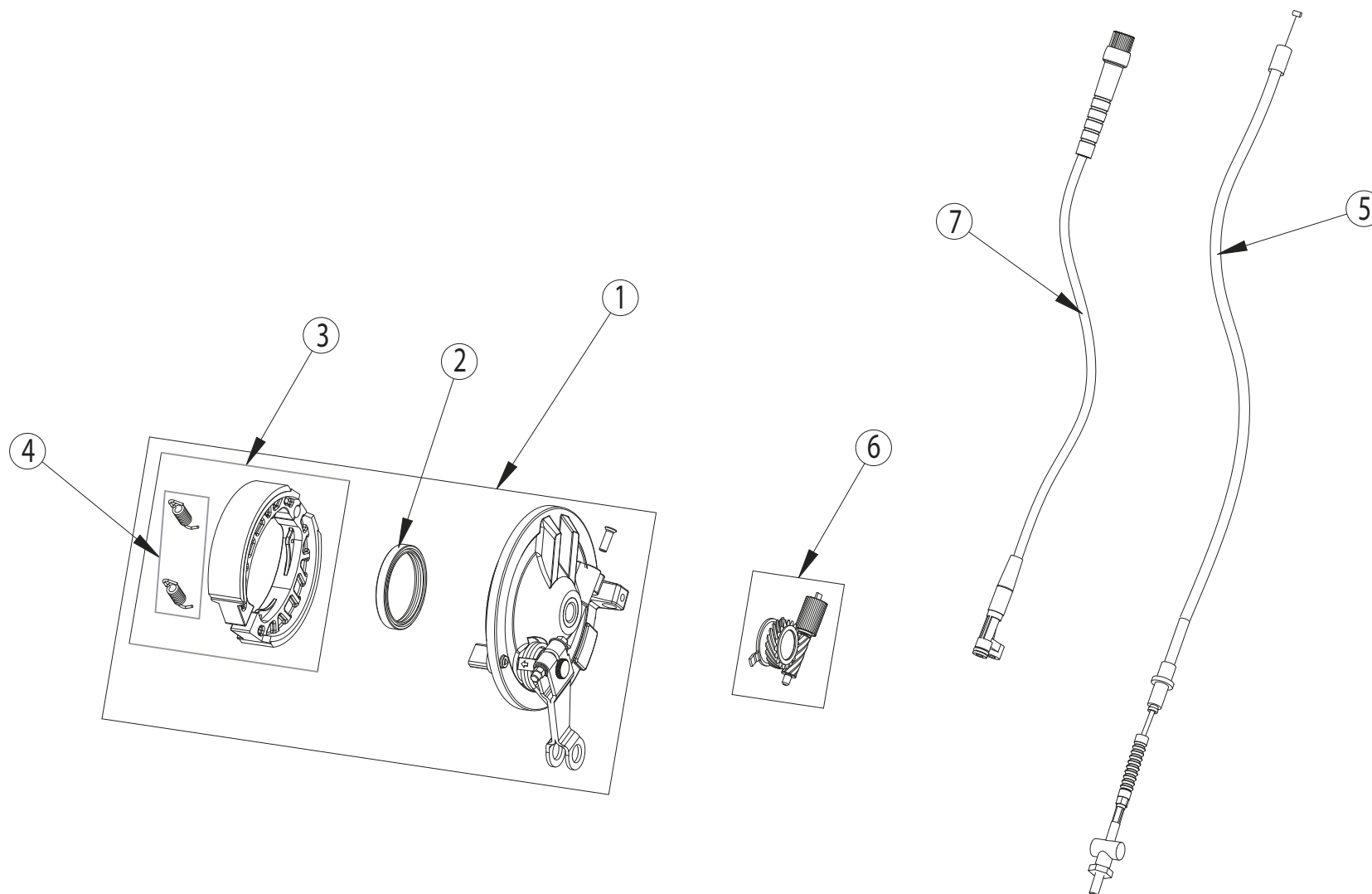
| Nº | Ref. | Descripción / Description | Qty. |
|----|-------------------|--|------|
| 1 | BB01-46661-00-810 | Spte. cesta superior / Bodywork bracket | 1 |
| 2 | BB01-51084-00-810 | Guardapolvo / Dust cover | 1 |
| 3 | BB01-51096-00-810 | Tuerca direccion / Steering nut | 1 |
| 4 | BB01-51120-00-810 | Cjto. rodamientos direccion / Steering bearings assy. | 1 |
| 5 | BB01-51281-00-810 | Spte. careta frontal / Front body cover bracket | 1 |
| 6 | BB01-52010-00-810 | Cjto. horquilla delantera Ø27 / Front fork assy. | 1 |
| 7 | BB01-52021-00-810 | Pletina inferior / Lower bracket1 | 1 |
| 8 | BB01-52031-00-810 | Tuerca pletina sup. / Upper bracket nut | 1 |
| 9 | BB01-52035-00-810 | Arandela pletina sup. / Upper bracket washer | 1 |
| 10 | BB01-52051-00-810 | Pletina superior / Upper bracket | 1 |
| 11 | BB01-52071-00-810 | Guía cable freno delantero / Front wire guide bracket | 1 |
| 12 | BB01-52130-00-810 | Cjto. barra izquierda / Left bar assy. | 1 |
| 13 | BB01-52230-00-810 | Cjto. barra derecha / Right bar assy. | 1 |
| 14 | BB01-52338-00-810 | Guardapolvo barra horquilla / Fork bar dust cover | 2 |
| 15 | BB01-52345-00-810 | Tornillo fijación barra / Front bar fixing screw | 2 |
| 16 | BB01-52355-00-810 | Tapon sup. barra horquilla / Front bar upper plug | 2 |
| 17 | BB01-52368-00-810 | Reten barra horquilla / Fork bar seal | 2 |
| 18 | BB01-84005-00-810 | Kit interruptores encendido/bloqueo / Switch/Lock kit * | 1 |
| 19 | 00280004 | Arandela M6 / Washer M6 (50 units/kit) | 1 |
| 20 | 00280070 | Tornillo M6x16 Allen / Allen screw M6x16 (50 units/kit) | 1 |
| 21 | 00280306 | Tornillo M6x16 Philips / Phillips screw M6x16 (25 units/kit) | 1 |

OBSERVACIONES / REMARKS

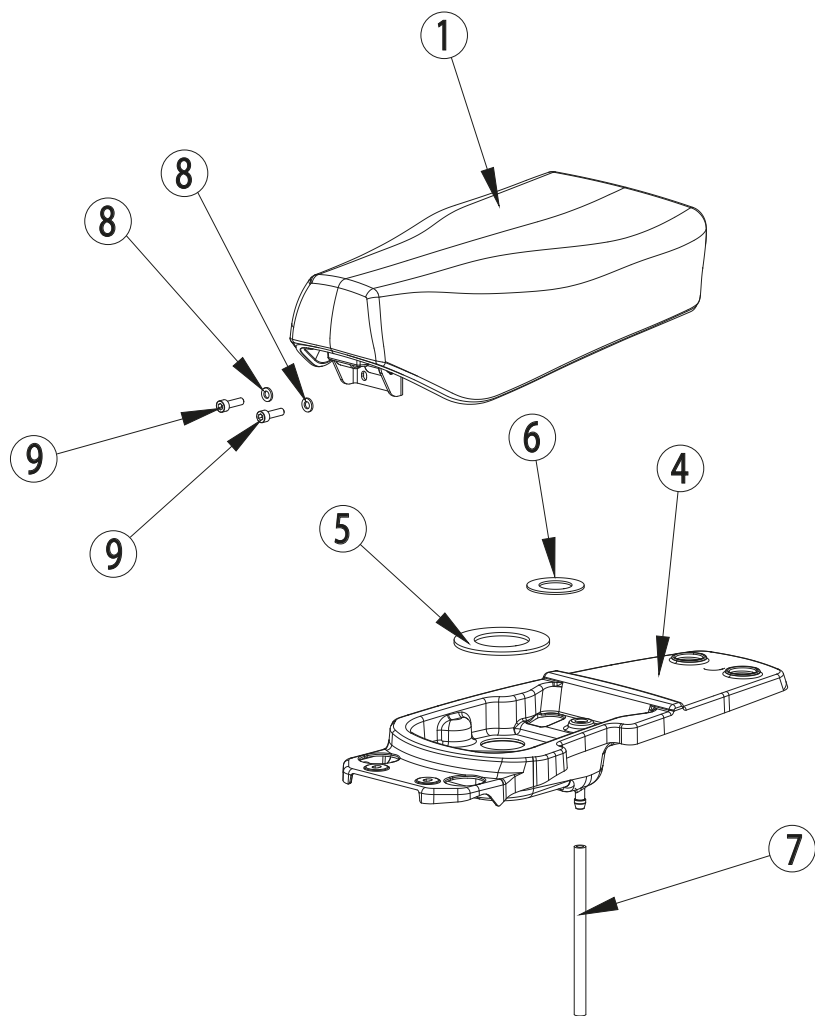
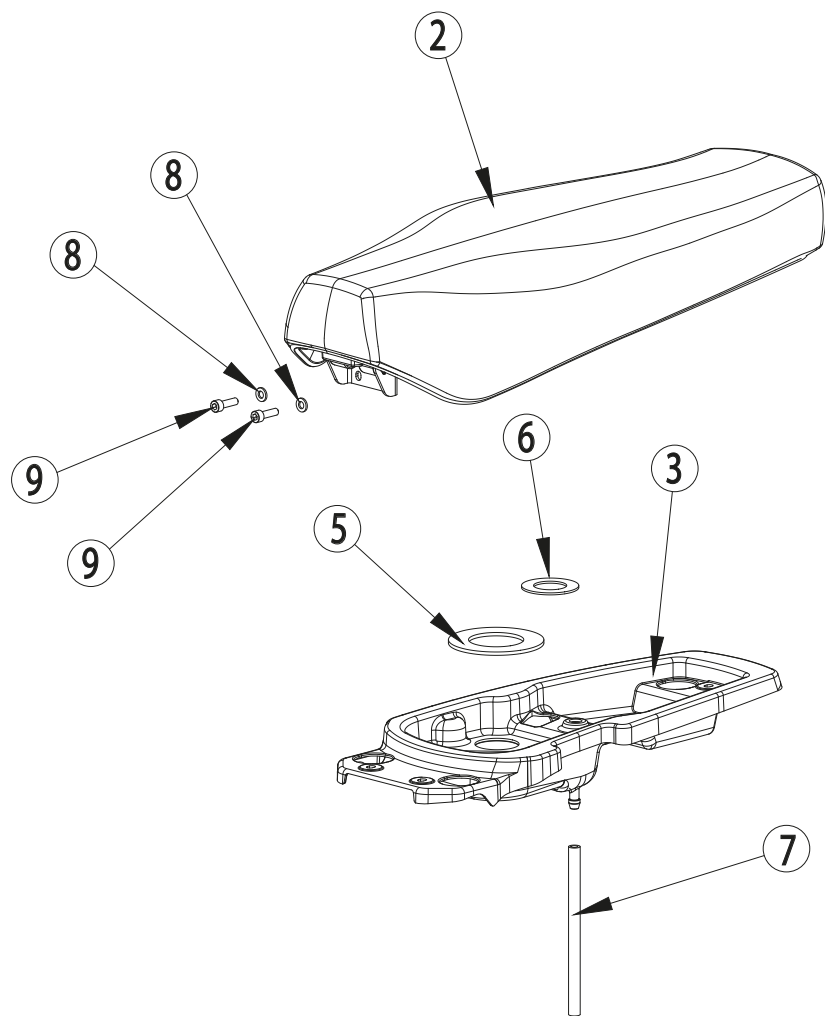
* La pieza nº18 incluye el interruptor principal y el clausor horquilla delantera. / Part nº18 include main switch and front fork lock.



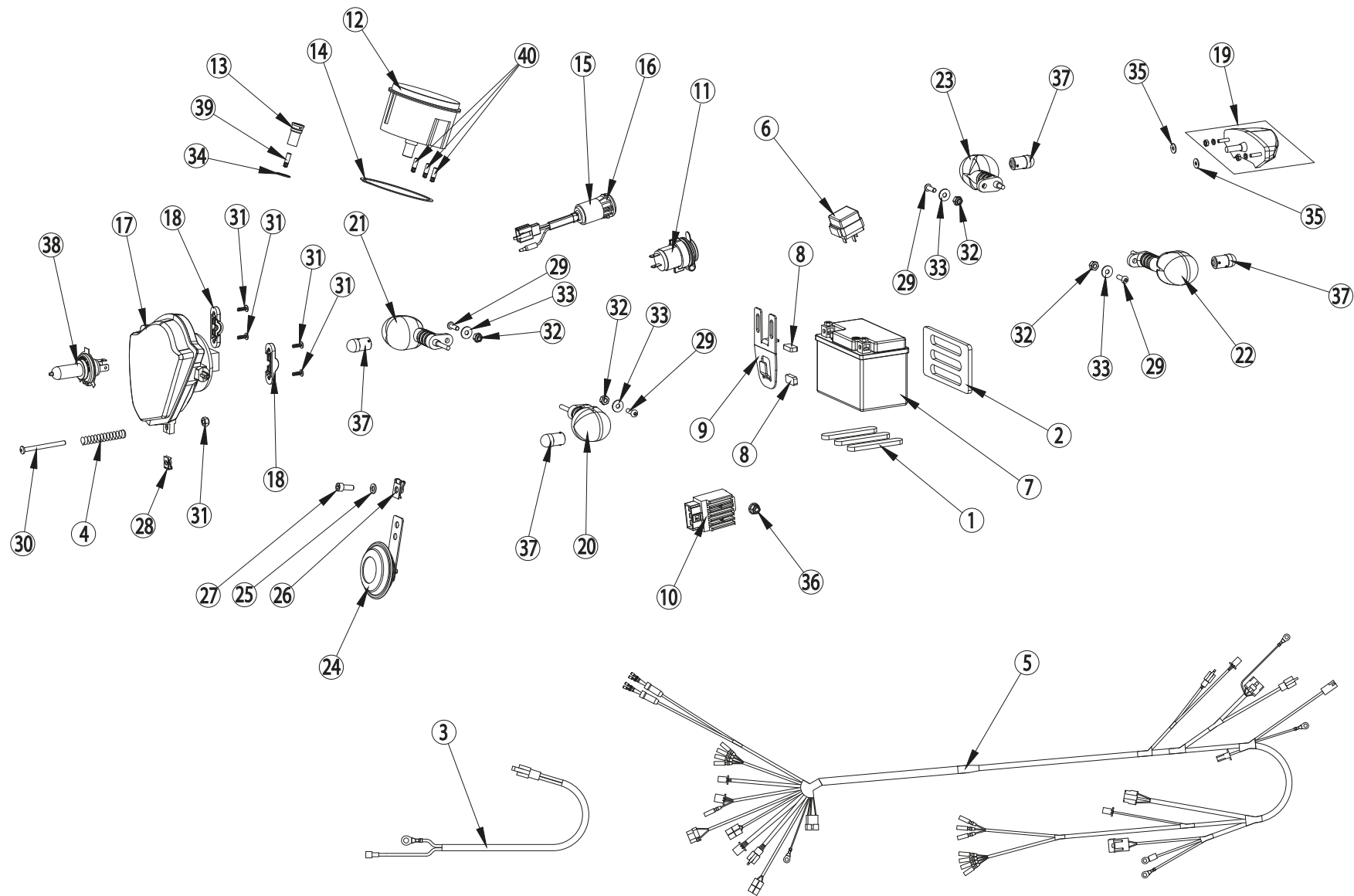
59



61



[illegible]





| Nº | Ref. | Descripción / Description | Qty. |
|----|-------------------|--|------|
| 1 | BB01-15086-00-810 | Espuma batería inf. / Lower battery foam | 3 |
| 2 | BB01-15087-00-810 | Espuma batería tras. / Rear battery foam | 1 |
| 3 | BB01-19330-00-810 | Cables motor arranque / Starter motor cables | - |
| 4 | BB01-45195-00-810 | Muelle retorno cierre sillín / Seat closure return spring | 1 |
| 5 | BB01-81010-00-810 | Instalación eléctrica base / Basic electrical installation | 1 |
| 6 | BB01-81021-00-810 | Rele motor de arranque / Starter motor relay | - |
| 7 | BB01-82010-00-810 | Batería CT4L-BS 12V 4Ah / Battery CT4L-BS 12V 4Ah | - |
| 8 | BB01-82015-00-810 | Espuma batería frontal / Front battery foam | - |
| 9 | BB01-82021-00-810 | Brida sujeción batería / Battery bracket | - |
| 10 | BB01-82030-00-810 | Regulador-rectificador / Regulator rectifier | 1 |
| 11 | BB01-82071-00-810 | Toma corriente 12V / 12V power output | - |
| 12 | BB01-83020-00-810 | Velocímetro Ø80 3 ind. / Speedometer Ø80 3 ind. | 1 |
| 13 | BB01-83025-00-810 | Piloto azul luz larga / High beam blue indicator | 1 |
| 14 | BB01-83028-00-810 | Junta velocímetro / Speedometer gasket | 1 |
| 15 | BB01-84005-00-810 | Kit interruptores encendido/bolqueo / Switch/Lock kit * | 1 |
| 16 | BB01-84010-00-810 | Interruptor principal / Main switch | 1 |
| 17 | BB01-85010-00-810 | Faro delantero / Front lamp | 1 |
| 18 | BB01-85071-00-810 | Soporte fijación faro delantero / Front lamp bracket | 2 |
| 19 | BB01-85150-00-810 | Piloto trasero / Rear lamp | 1 |
| 20 | BB01-85210-00-810 | Intermitente del. izq. / Front left turn light | - |
| 21 | BB01-85220-00-810 | Intermitente del. drcho. / Front right turn light | - |
| 22 | BB01-85230-00-810 | Intermitente tras. izq. / Rear left turn light | - |
| 23 | BB01-85240-00-810 | Intermitente tras. drcho. / Rear right turn light | - |
| 24 | BB01-86010-00-810 | Claxon / Horn | 1 |

OBSERVACIONES / REMARKS

* La pieza nº15 incluye interruptor principal y el clausor horquilla delantera / Part nº15 include main switch and front fork lock.

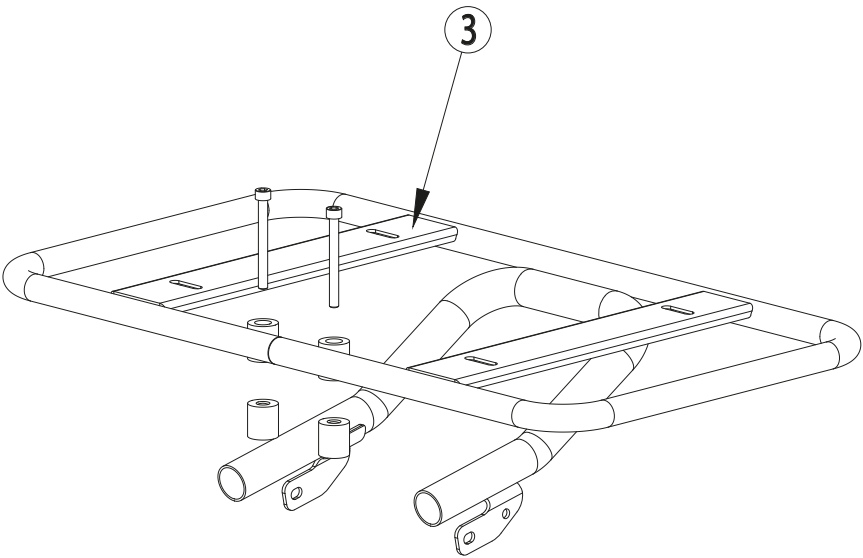
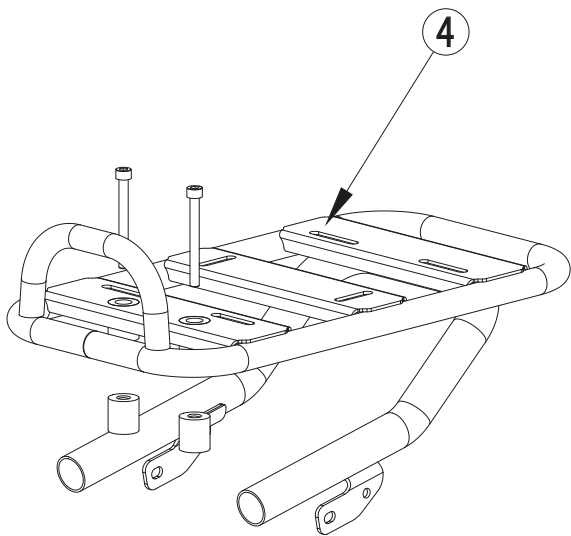
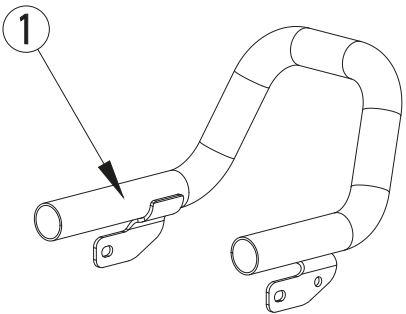
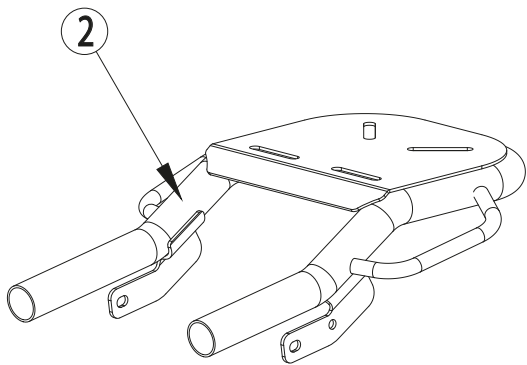




| Nº | Ref. | Descripción / Description | Qty. |
|----|----------|---|------|
| 25 | 00280004 | Arandela M4 / Washer M4 (50 units/kit) | 1 |
| 26 | 00280019 | Tuerca rapida M6 / Self-locking nut M6 (10 units/kit) | 1 |
| 27 | 00280070 | Tornillo M6x16 allen / Allen screw M6x16 (50 units/kit) | 1 |
| 28 | 00280110 | Tuerca rapida M5 / Snap nut M5 (10 units/kit) | 1 |
| 29 | 00280226 | Tornillo M5x20 ULS / ULS screw M5x20 (50 units/kit) | 1 |
| 30 | 00280242 | Tornillo M5x60 ULS / ULS screw M5x60 (10 units/kit) | 1 |
| 31 | 00280244 | Tornillo rosca plastico 4x12 / Plastic thread screw 4x12 (25 units/kit) | 1 |
| 32 | 00280245 | Tuerca M5 autoblocante / Self-locking nut M5 (50 units/kit) | 1 |
| 33 | 00280246 | Arandela M5 ancha / Wide washer M5 (10 units/kit) | 1 |
| 34 | 00280257 | Anillo seguridad Ø14 / Lock ring Ø14 (25 units/kit) | 1 |
| 35 | 00280273 | Arandela M4 ancha / Wide washer M4 (50 units/kit) | 1 |
| 36 | 00280278 | Tuerca M6 autoblocante / Self-locking nut M6 (25 units/kit) | 1 |
| 37 | EL00001 | Bombilla piloto 12V 10W R10W / Turn light bulb 12V 10W R10W | 1 |
| 38 | EL00002 | Bombilla 12V 30/35W HS1 / Front light bulb 12V 30/35W HS1 | 1 |
| 39 | EL00003 | Bombilla 1,2W W2x4,6D / Tachometer light bulb 1,2W W2x4,6D | 1 |
| 40 | EL00004 | Bombilla 2W W2x4,6D / Tachometer light bulb 2W W2x4,6D | 1 |

OBSERVACIONES / REMARKS

* La pieza nº15 incluye el interruptor principal y el clausor horquilla delantera. / Part nº15 include main switch and front fork lock.



[illegible]



BYE BIKE

TECNIGAS PARTS S.L.

Pol. Pla de la Font, Parc. 1.

E-17832, Crespia. SPAIN.

Tel. (+34) 972 570 988

Fax (+34) 972 570 950

www.byebike.com

info@byebike.com