

**SPARE PART CATALOGUE · BYE BIKE ONE & ONE+ (45 Km/h)**



### **DESPIECE ONE & ONE+**

Enero 2017 | Todos los derechos reservados

Está prohibida la reproducción de este documento sin el permiso expreso de TECNIGAS PARTS S.L.

Sólo los recambios originales BYE BIKE ofrecen una garantía de calidad y garantizan que su vehículo podrá continuar funcionando en perfectas condiciones durante mucho tiempo.

Las especificaciones, apariencia, colores (incluyendo el color de la carrocería), equipamiento, materiales y otras características de los productos BYE BIKE están sujetas a cambio sin previo aviso y pueden variar dependiendo de las normativas o requisitos locales. Los modelos de los dibujos pueden llevar equipamientos extra que no són aplicados a los modelos estandard.

### **PART LIST ONE & ONE+**

January 2017 | All rights reserved.

Reproduction of this document without TECNIGAS PARTS S.L.'s express permission is expressly prohibited.

Only original spare parts and accessories BYE BIKE offer a technical quality and ensure your vehicle will run in perfect condition for a long time.

Specifications, appearance, color (including all covers), equipment, materials and other features of the BYE BIKE products are subject to change without any previous notice and may vary depending on local regulations or requirements. The illustrated models partly contain extra equipment, which is not applied to standard models.

## NÚMEROS DE IDENTIFICACIÓN / IDENTIFICATION NUMBER

Localización de los números de identificación del vehículo y del motor.

Engine and vehicle number location.



1. Número de identificación del motor (EIN)  
Engine identification number (EIN)  
(ex. \*BBM0101xxxxx\*)

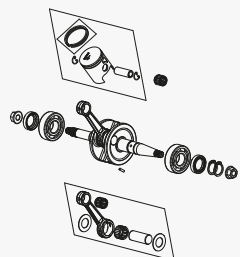


1. Número de identificación del vehículo (VIN)  
Vehicle identification number (VIN)  
(ex. \*UBJBB1101xxxxxxx\*)

## BYE BIKE

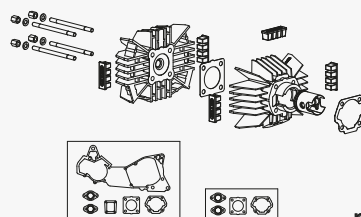
TECNIGAS PARTS S.L.  
Pol. Pla de la Font, Parc. 1.  
E-17832, Crespà. SPAIN.  
Tel. (+34) 972 570 988  
Fax (+34) 972 570 950  
[www.byebike.com](http://www.byebike.com)  
[info@byebike.com](mailto:info@byebike.com)

## CIGÜEÑAL | 01 CRANKSHAFT



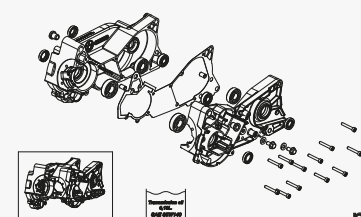
pag. 8

## CILINDRO | 02 CYLINDER



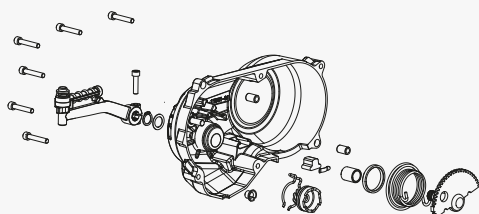
pag. 10

## CÁRTER | 03 CRANKCASE



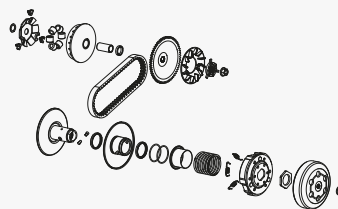
pag. 12

## PEDAL DE ARRANQUE | 04 KICKSTARTER



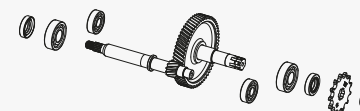
pag. 14

## TRANSMISIÓN CVT | 05 CVT TRANSMISSION



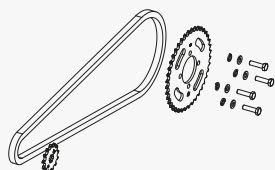
pag. 16

## TRANSMISIÓN REDUCTORA | 06 REDUCTION TRANSMISSION



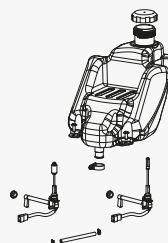
pag. 18

## TRANSMISIÓN DE CADENA | 07 CHAIN TRANSMISSION



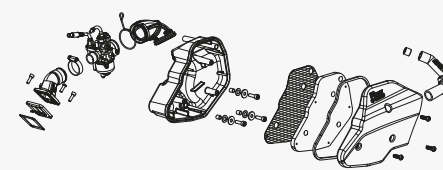
pag. 20

## DEPÓSITO DE COMBUSTIBLE | 08 FUEL TANK



pag. 22

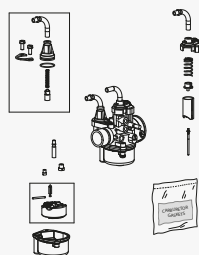
## FILTRO DE AIRE | 09 AIR FILTER



pag. 24

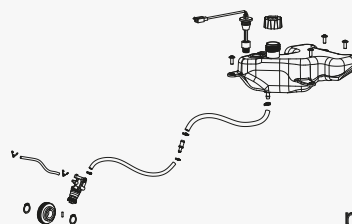


## CARBURADOR | 10 CARBURETOR



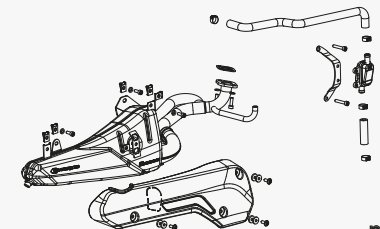
pag. 26

## LUBRICACIÓN | 11 LUBRICATION



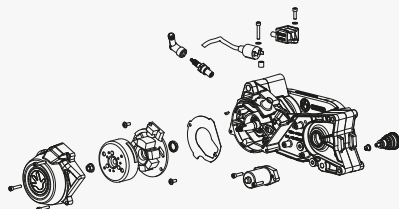
pag. 28

## TUBO DE ESCAPE | 12 EXHAUST SYSTEM



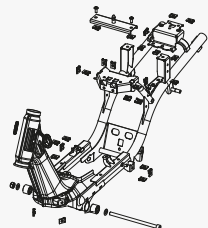
pag. 30

## VOLANTE MAGNÉTICO | 13 FLYWHEEL MAGNETO



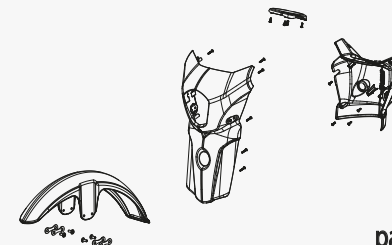
pag. 32

## BASTIDOR | 14 FRAME



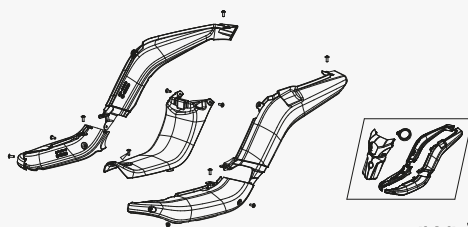
pag. 34

## CARROCERÍA FRONTAL | 15 FRONT COVER



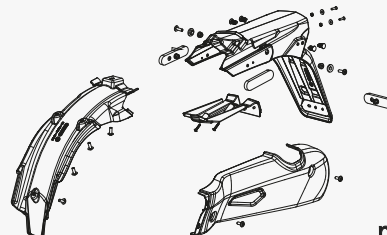
pag. 36

## CARROCERÍA CENTRAL | 16 CENTRAL COVER



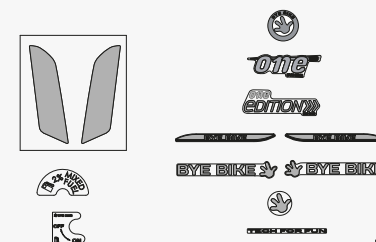
pag. 38

## CARROCERÍA POSTERIOR | 17 BACK COVER



pag. 40

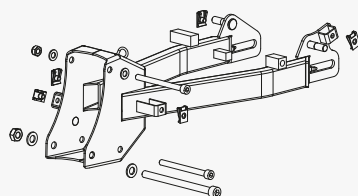
## ADHESIVOS | 18 STICKERS



pag. 42

## BASCULANTE | 19

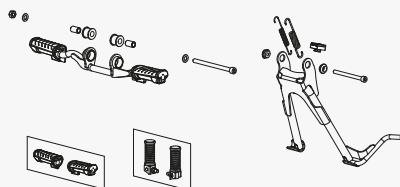
SWINGING ARM



pag. 44

## CABALLETE & ESTRIBOS | 20

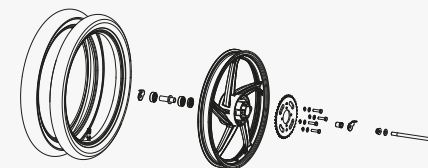
STAND & FOOTREST



pag. 46

## RUEDA TRASERA | 21

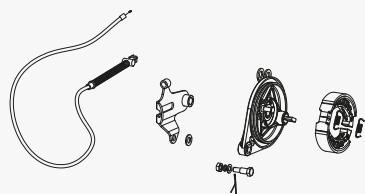
REAR WHEEL



pag. 48

## FRENO TRASERO | 22

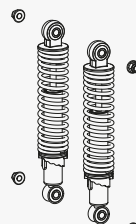
REAR BRAKE



pag. 50

## SUSPENSIÓN TRASERA | 23

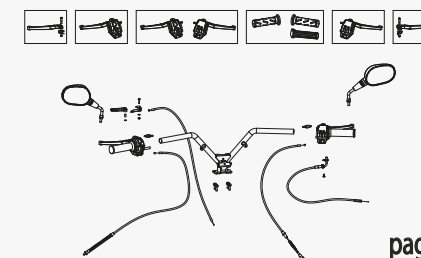
REAR SUSPENSION



pag. 52

## MANILLAR | 24

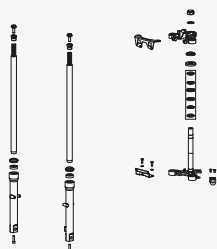
HANDLEBAR



pag. 54

## HORQUILLA DELANTERA | 25

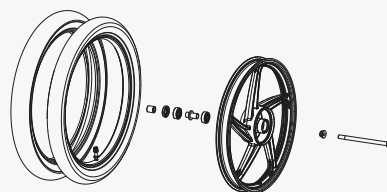
FRONT FORK



pag. 56

## RUEDA DELANTERA | 26

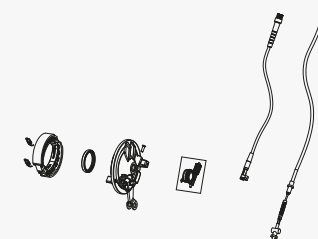
FRONT WHEEL



pag. 58

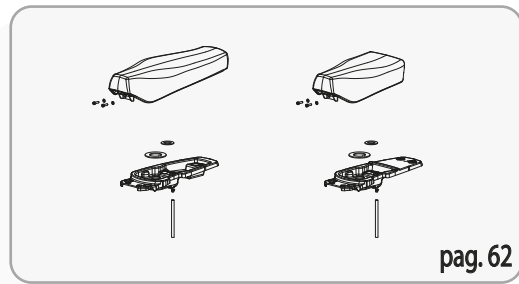
## FRENO DELANTERO | 27

FRONT BRAKE

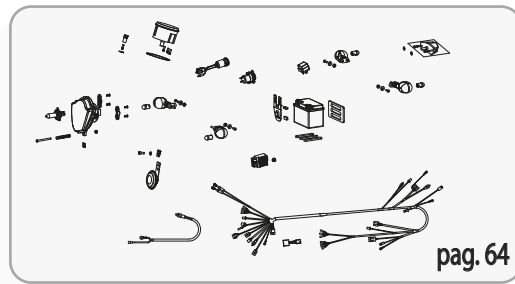


pag. 60

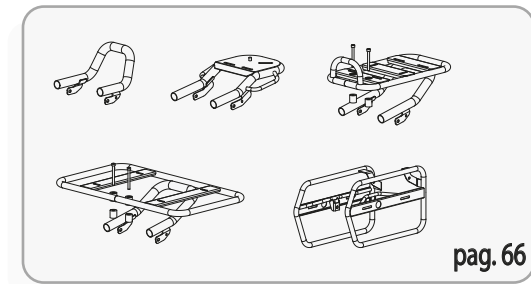
## ASIENTOS | SEATS | **28**

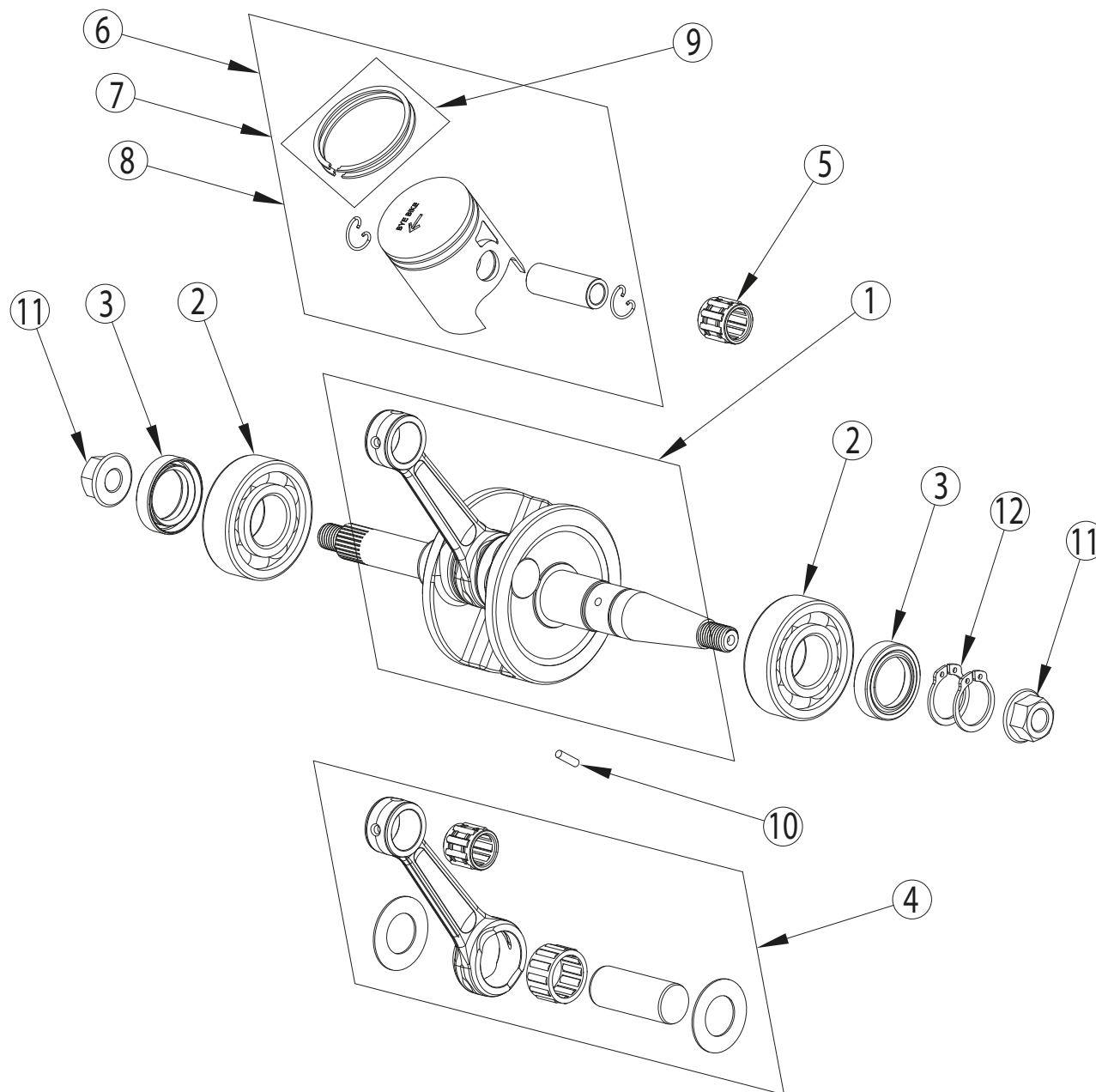


## SISTEMA ELÉCTRICO | ELECTRIC SYSTEM | **29**

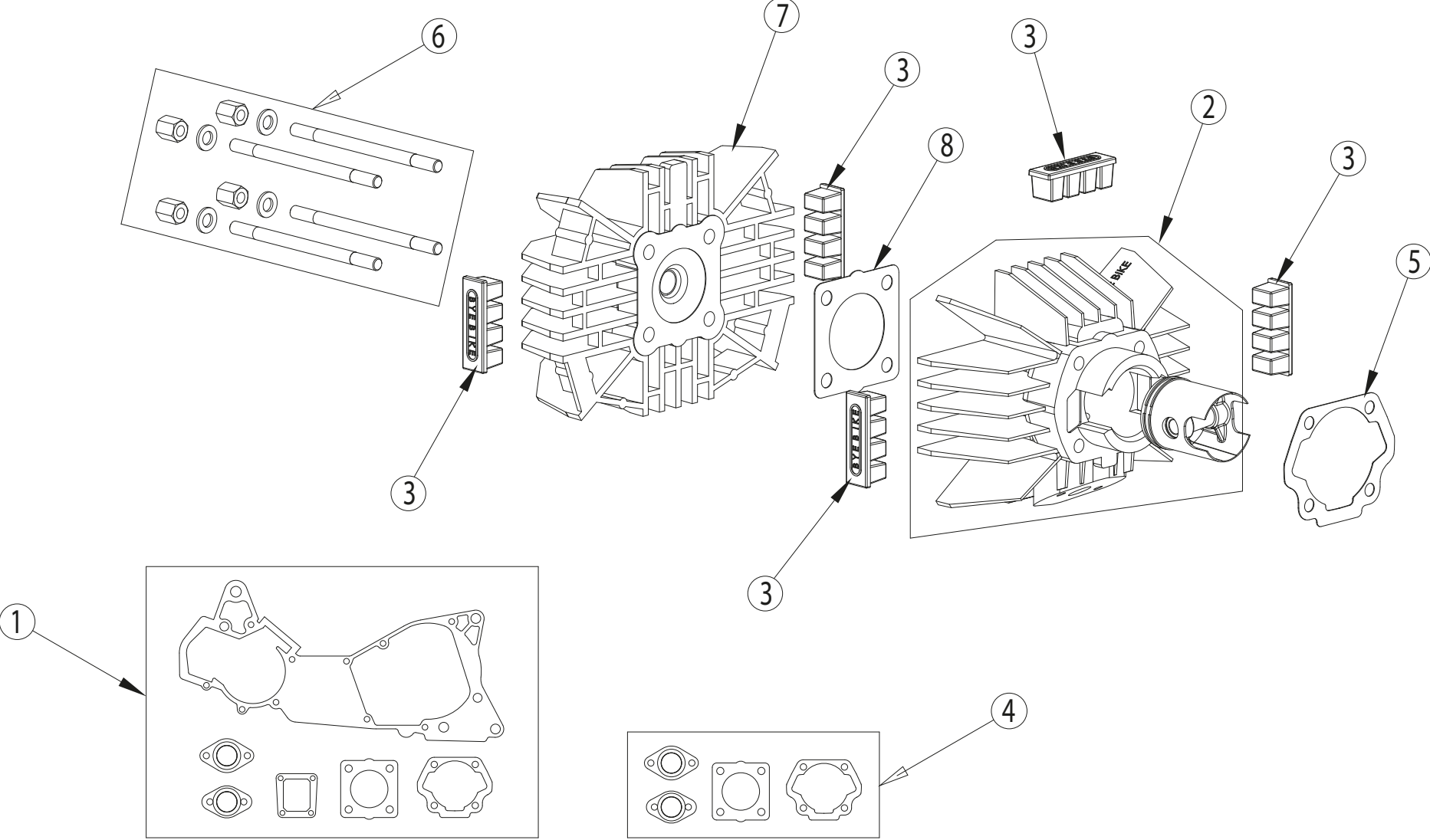


## ASIDEROS/PORTAEQUIPAJES | REAR RACK/LUGGAGE CARRIER | **30**



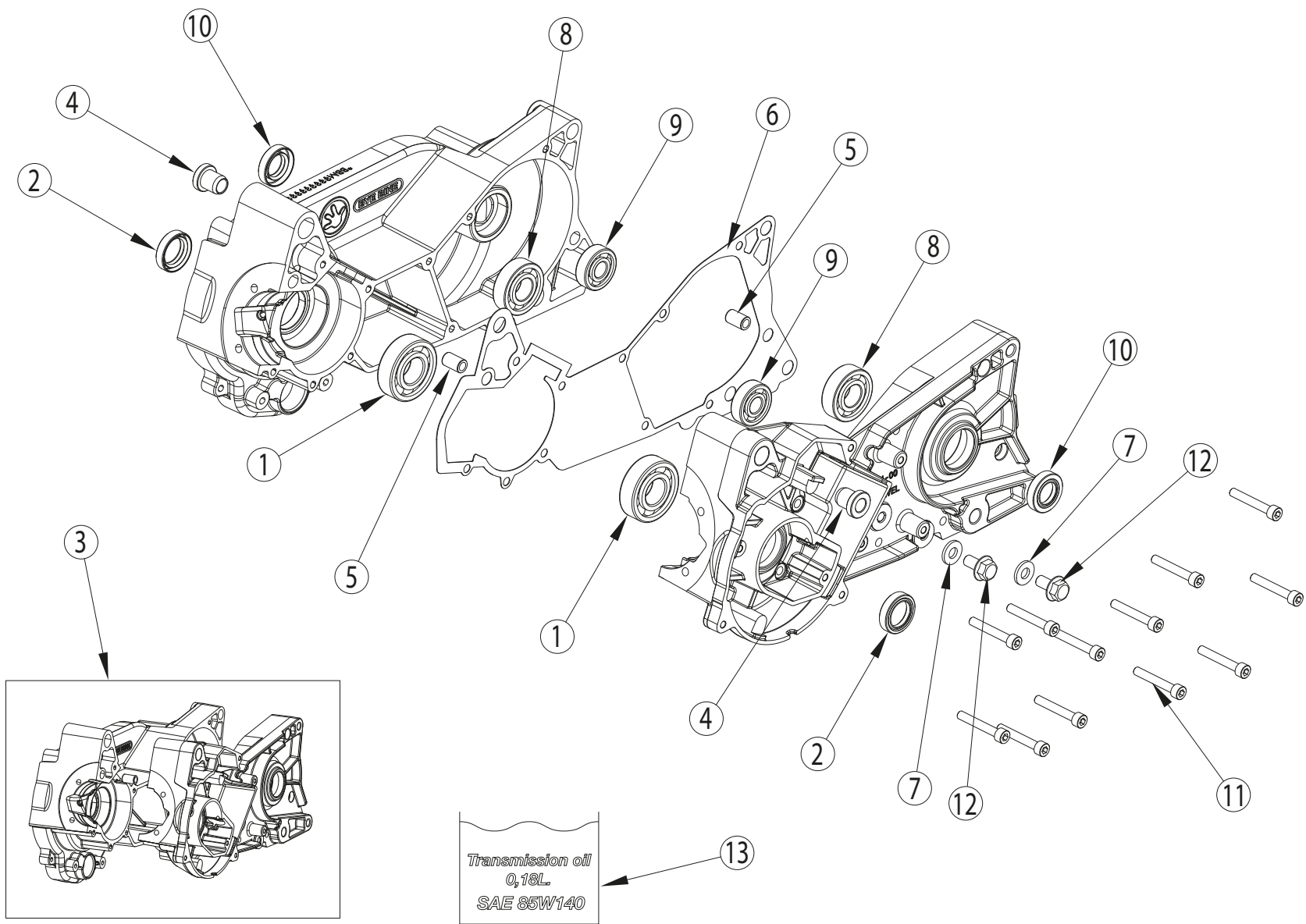


Nº	Ref.	Descripción / Description	Qty.
1	BB01-11110-00-810	Cjto. cigüeñal / Crankshaft assy.	1
2	BB01-11191-00-810	Rodamiento cigüeñal / Crankshaft bearing 6204 C4	2
3	BB01-11195-00-810	Retén cigüeñal / Crankshaft seal 20x30x7 TC	2
4	BB01-11210-00-810	Cjto. biela / Rod assy.	1
5	BB01-11283-00-810	Rodamiento pistón / Piston bearing 12x16x15	1
6	BB01-11308-00-810	Cjto. pistón / Piston assy. Ø39,89	-
7	BB01-11309-00-810	Cjto. pistón / Piston assy. Ø39,88	-
8	BB01-11310-00-810	Cjto. pistón / Piston assy. Ø39,87	1
9	BB01-11320-00-810	Cjto. segmentos pistón / Piston ring kit	1
10	BB01-16175-00-810	Pasador engranaje bomba aceite / Oil pump gear pin	1
11	00280224	Tuerca / Nut M10x1,25 DIN 6923 8 zinc (5 unit/kit)	1
12	00280239	Circlip Ø19 DIN 471 (25 unit/kit)	1

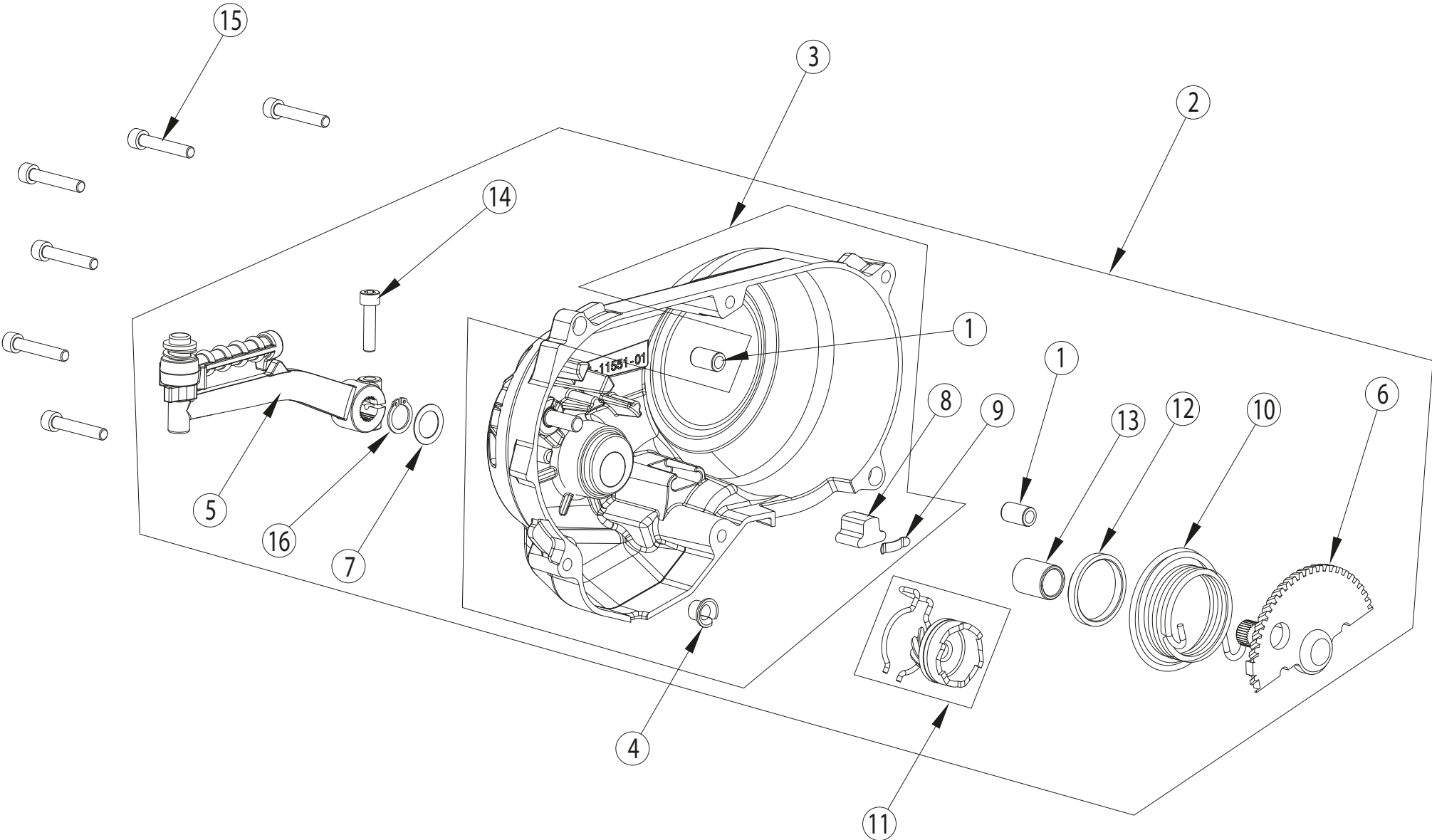


\* La pieza n°2 incluye cilindro + cjto. pistón / Part n°2 include cylinder + piston assy.





13

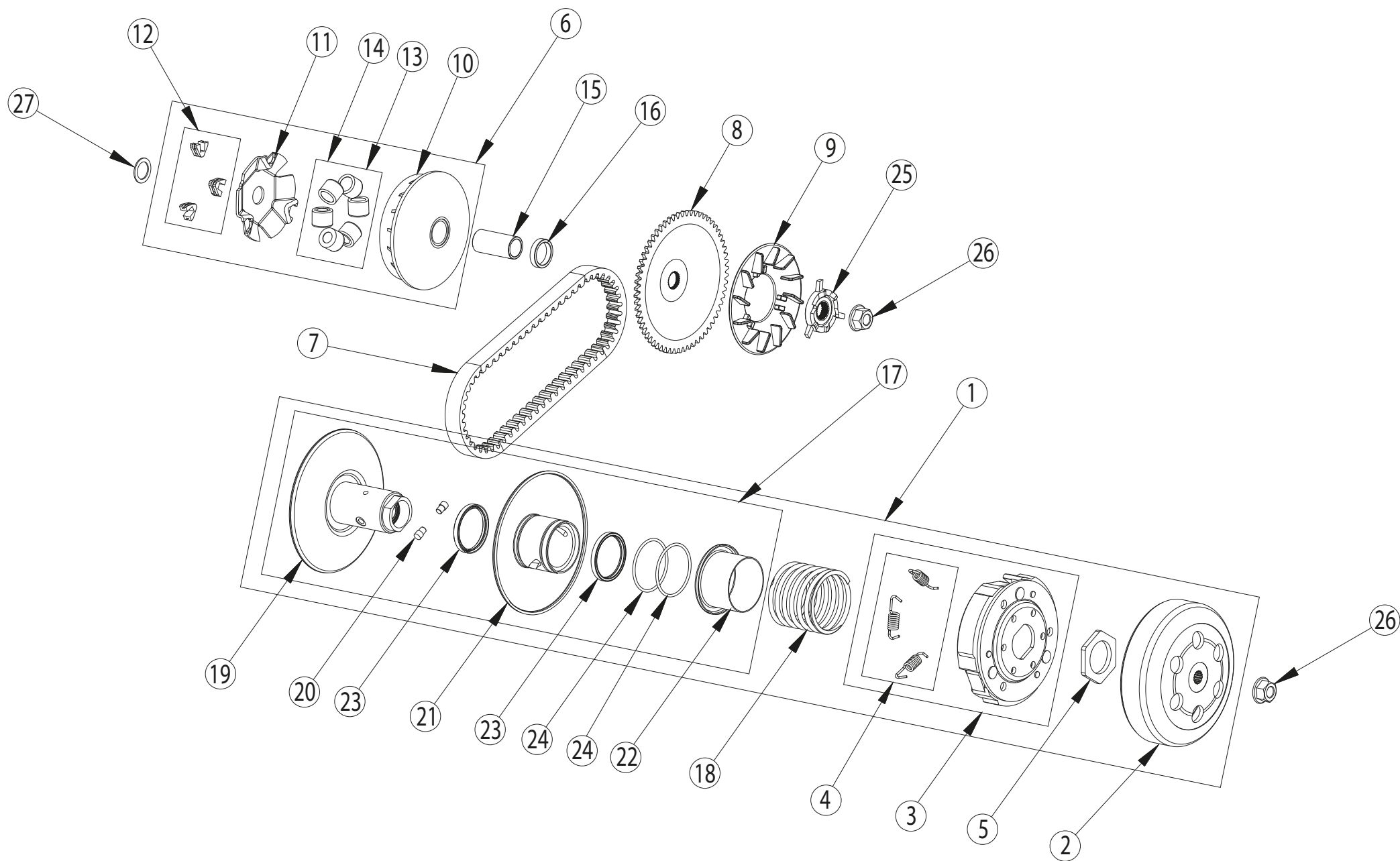




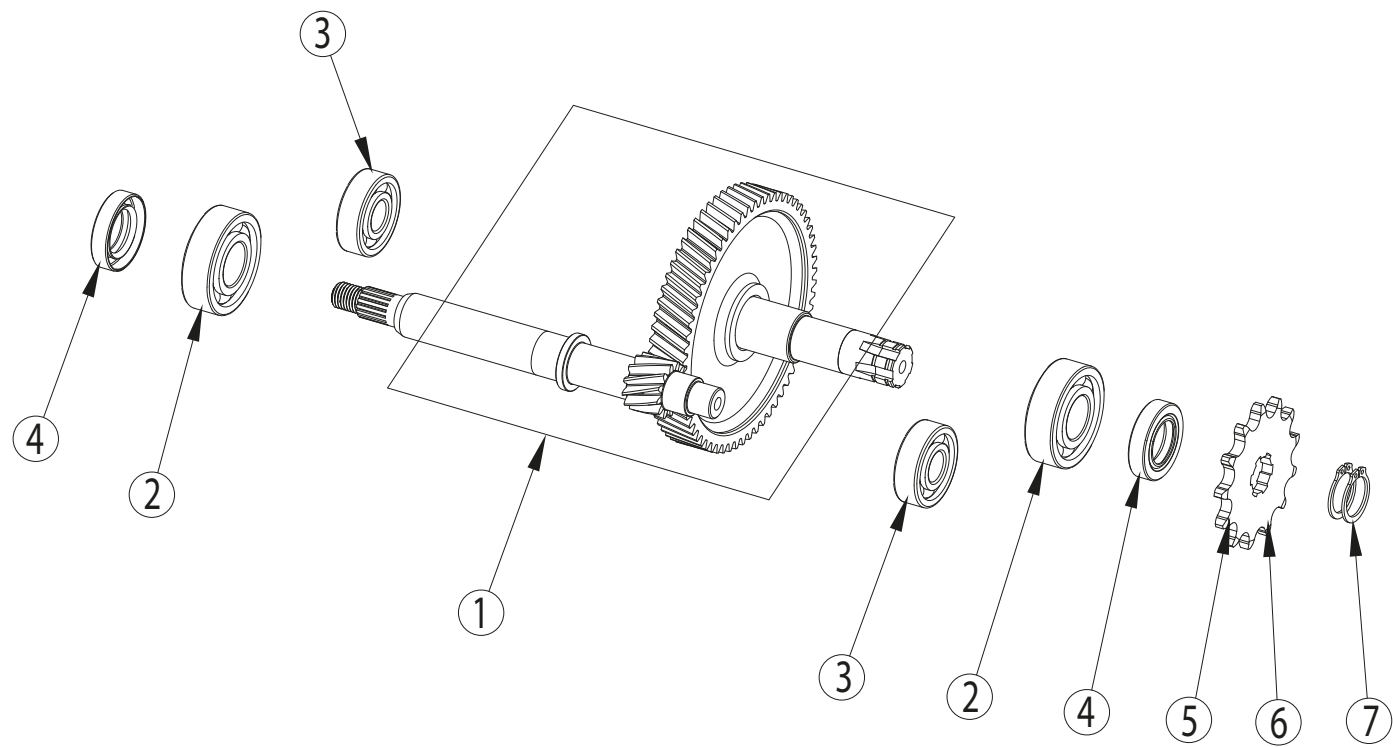
Nº	Ref.	Descripción / Description	Qty.
1	BB01-11485-00-810	Casquillo centrador / Dowel pin	2
2	BB01-11550-01-810	Cjto. tapa cárter variador (Negro) / Variator crankcase cover assy. (Black) *	1
2	BB01-11550-01-811	Cjto. tapa cárter variador (Aluminio) / Variator crankcase cover assy. (Aluminium) *	1
3	BB01-11551-01-810	Tapa cárter variador (Negro) / Variator crankcase cover (Black)	1
3	BB01-11551-01-811	Tapa cárter variador (Aluminio) / Variator crankcase cover (Aluminium)	1
4	BB01-19391-00-810	Casquillo bendix / Bendix bush	1
5	BB01-19420-00-810	Pedal arranque / Kickstarter	1
6	BB01-19432-00-810	Eje pedal arranque / Kickstarter axis	1
7	BB01-19435-00-810	Arandela ajuste eje pedal arranque / Kickstarter axis washer	1
8	BB01-19437-00-810	Goma tope pedal arranque / Kickstarter rubber	1
9	BB01-19438-00-810	Clip goma tope eje pedal arranque / Kickstarter rubber clip	1
10	BB01-19441-00-810	Muelle pedal arranque / Kickstarter spring	1
11	BB01-19452-00-810	Piñón ataque arranque / Kickstarter gear	1
12	BB01-19485-00-810	Casquillo centrador muelle arranque / Kickstarter spring dowel pin	1
13	BB01-19491-00-810	Casquillo pedal arranque / Kickstarter spacer	1
14	00280068	Tornillo allen / Allen screw M6x25 DIN 912 8.8 zinc (25 unit/kit)	1
15	00280234	Tornillo allen / Allen screw M6x35 DIN 912 8.8 zinc (25 unit/kit)	1
16	00280257	Circlip Ø14 DIN 471 (25 unit/kit)	1

## OBSERVACIONES / REMARKS

\* La pieza nº2 no incluye la pieza nº1 en el conjunto de piezas. / Part nº2 do not include part nº1 in part assembly.

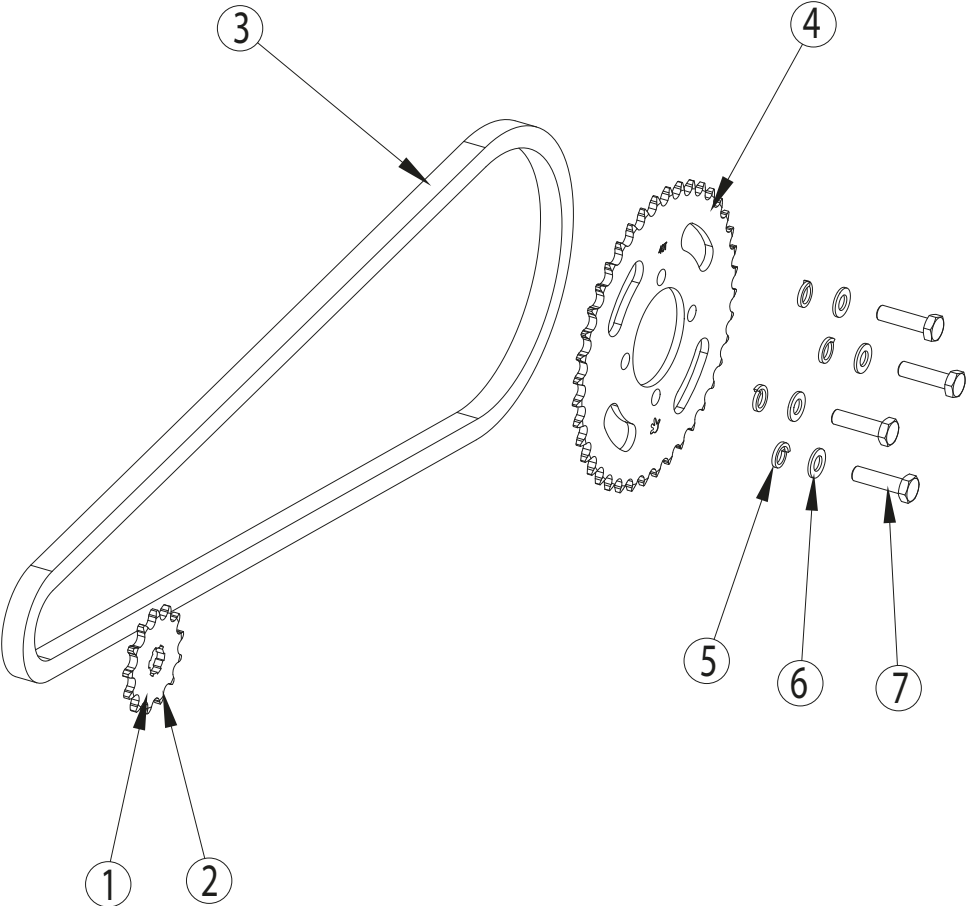


17

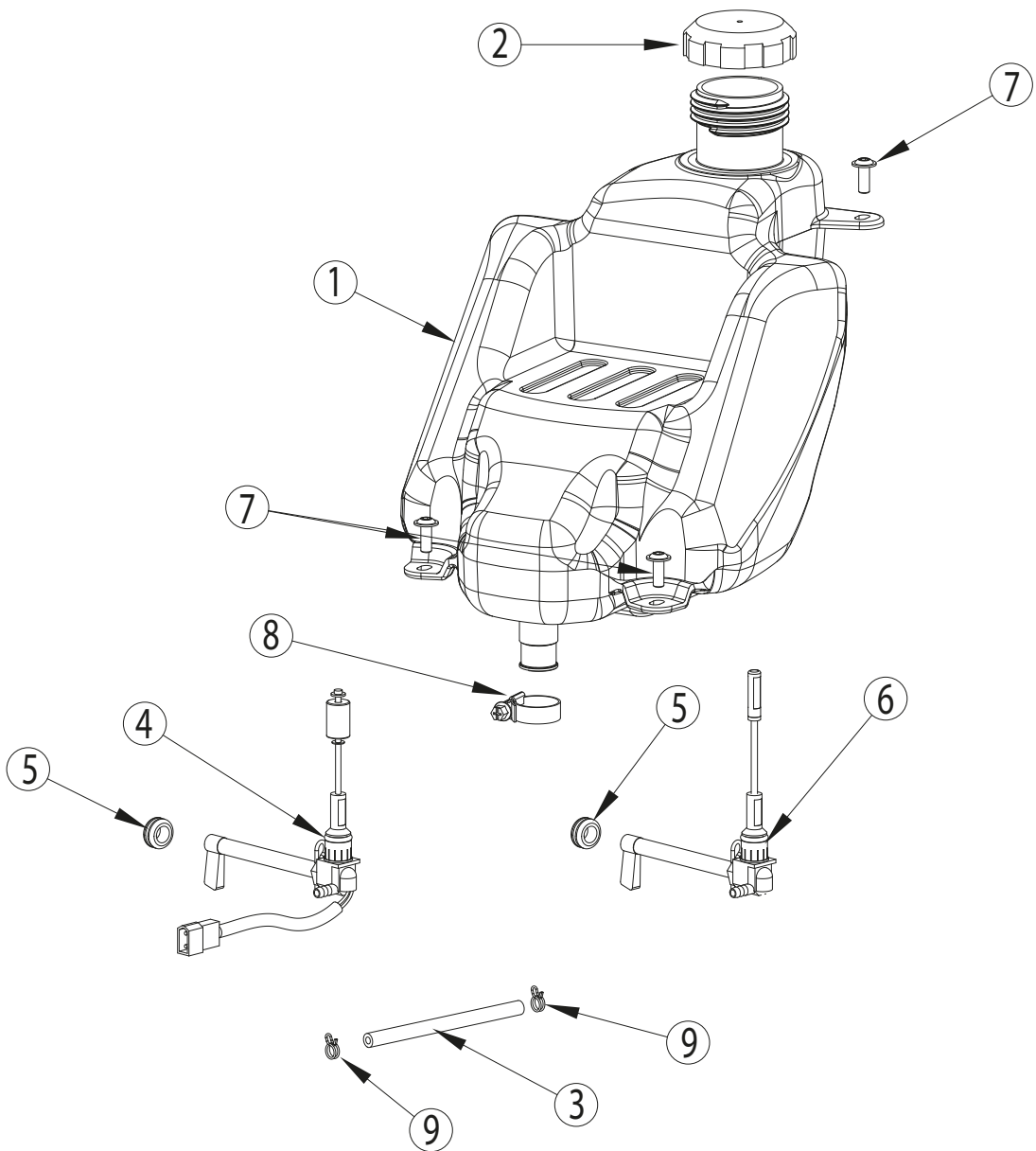




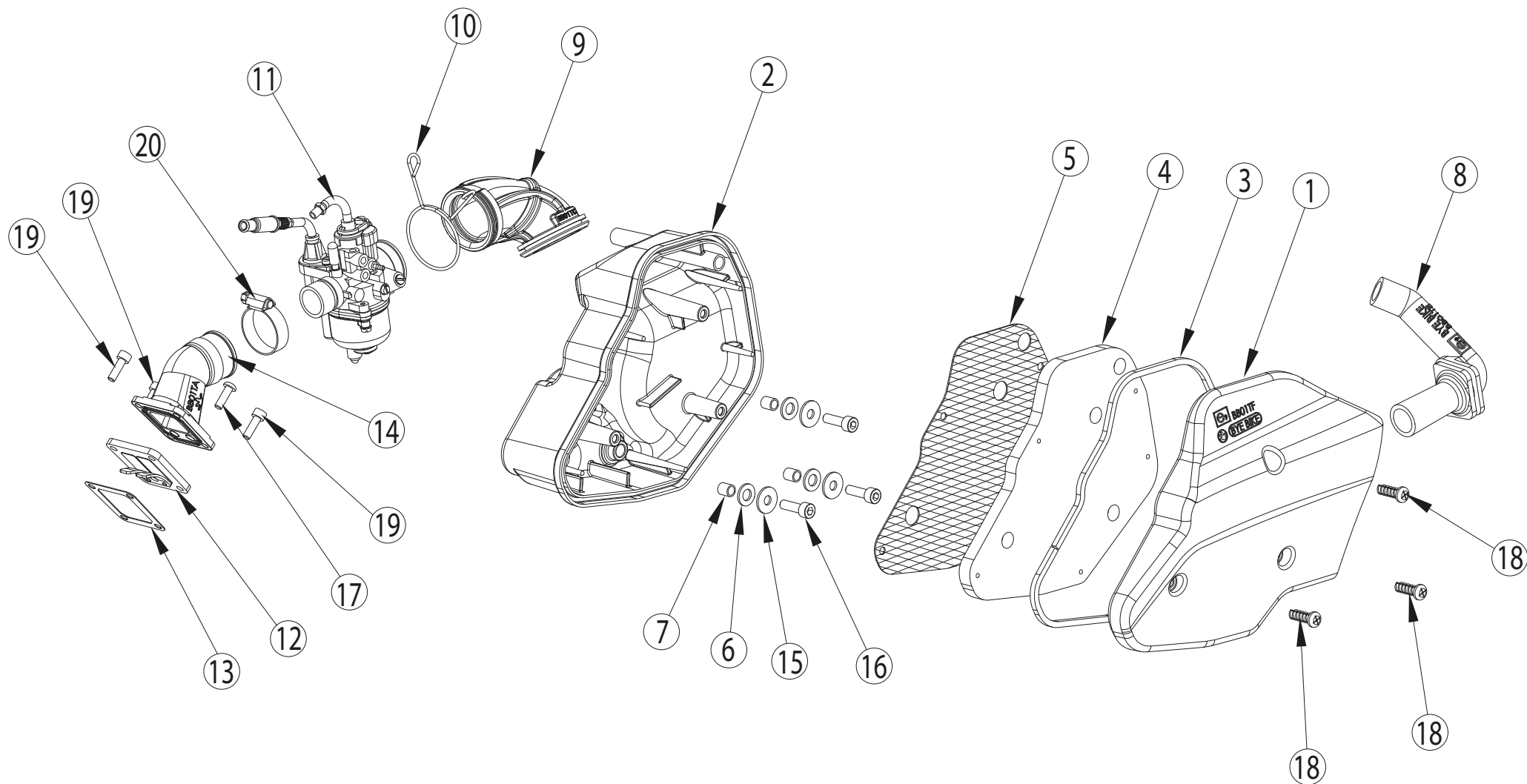




21



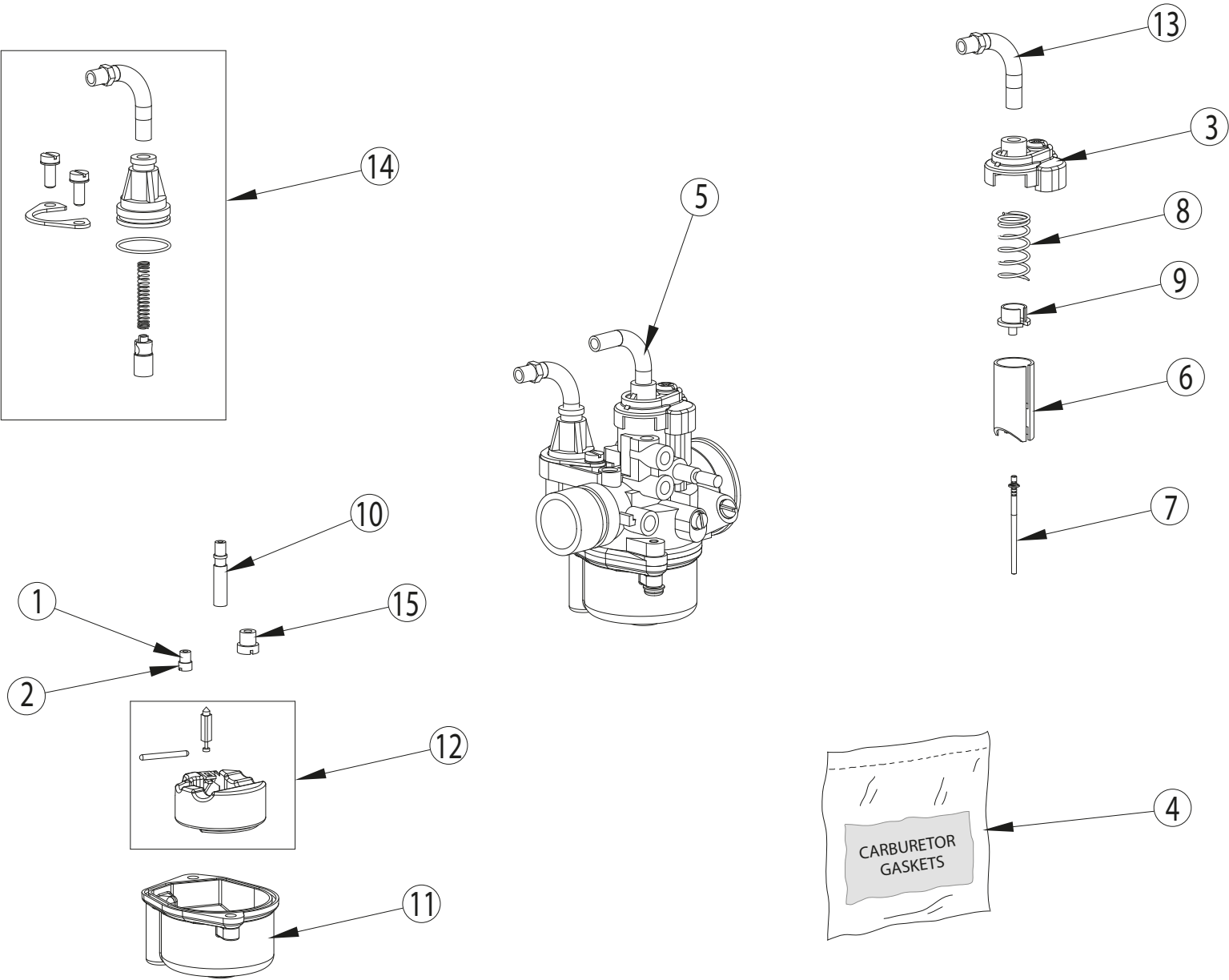
23



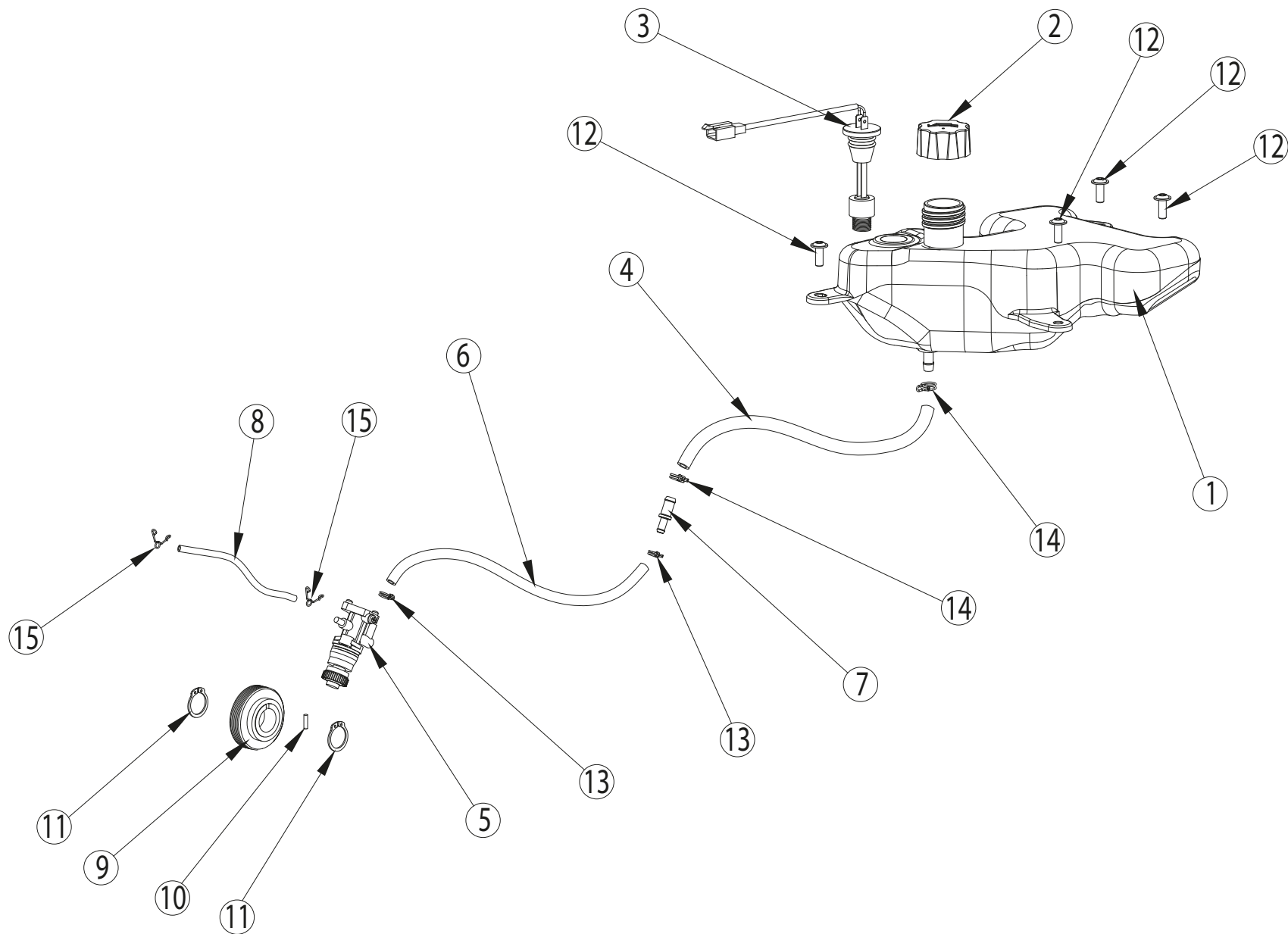


Nº	Ref.	Descripción / Description	Qty.
1	BB01-15315-00-810	Caja de filtro ext. / Airbox cover	1
2	BB01-15317-00-810	Caja de filtro int. / Airbox	1
3	BB01-15325-00-810	Junta caja de filtro / Airbox gasket	1
4	BB01-15331-00-810	Filtro de aire / Air filter	1
5	BB01-15334-00-810	Rejilla filtro de aire / Air filter suport	1
6	BB01-15335-00-810	Arandela goma caja de filtro / Airbox rubber washer	3
7	BB01-15336-00-810	Casq. centrador caja de filtro / Airbox dowel pin	3
8	BB01-15341-00-810	Tobera entrada caja de filtro / Airbox inlet nozzle	1
9	BB01-15345-00-810	Tobera salida caja de filtro / Airbox outlet nozzle	1
10	BB01-15351-00-810	Brida tobera salida / Outlet nozzle clamp	1
11	BB01-15500-00-810	Cjto. carburador TKG-01 X76 MAN. M1 / Carburetor kit TKG-01 X76 MAN. M1	1
12	BB01-15630-00-810	Cjto. laminas admision / Reed valves case	1
13	BB01-15635-00-810	Junta laminas admision / Reed valves case gasket	1
14	BB01-15661-00-810	Tobera admision / Manifold	1
15	00280001	Arandela ancha / Wide washer M6 DIN 9021 zinc (50 unit/kit)	1
16	00280027	Tornillo allen / Allen screw M6x20 DIN 912 8.8 zinc (25 unit/kit)	1
17	00280227	Tornillo ULS CE / ULS CE screw M5x16 ISO 7380 zinc (10 unit/kit)	1
18	00280228	Tornillo rosca plastico PH / PH plastic thread screw 6x20 ainc (5 unit/kit)	1
19	00280256	Tornillo allen / Allen screw M5x16 DIN 912 8.8 zinc (50 unit/kit)	1
20	00280308	Abrazadera / Clamp Ø8 W1 20-32 (5 unit/kit)	1

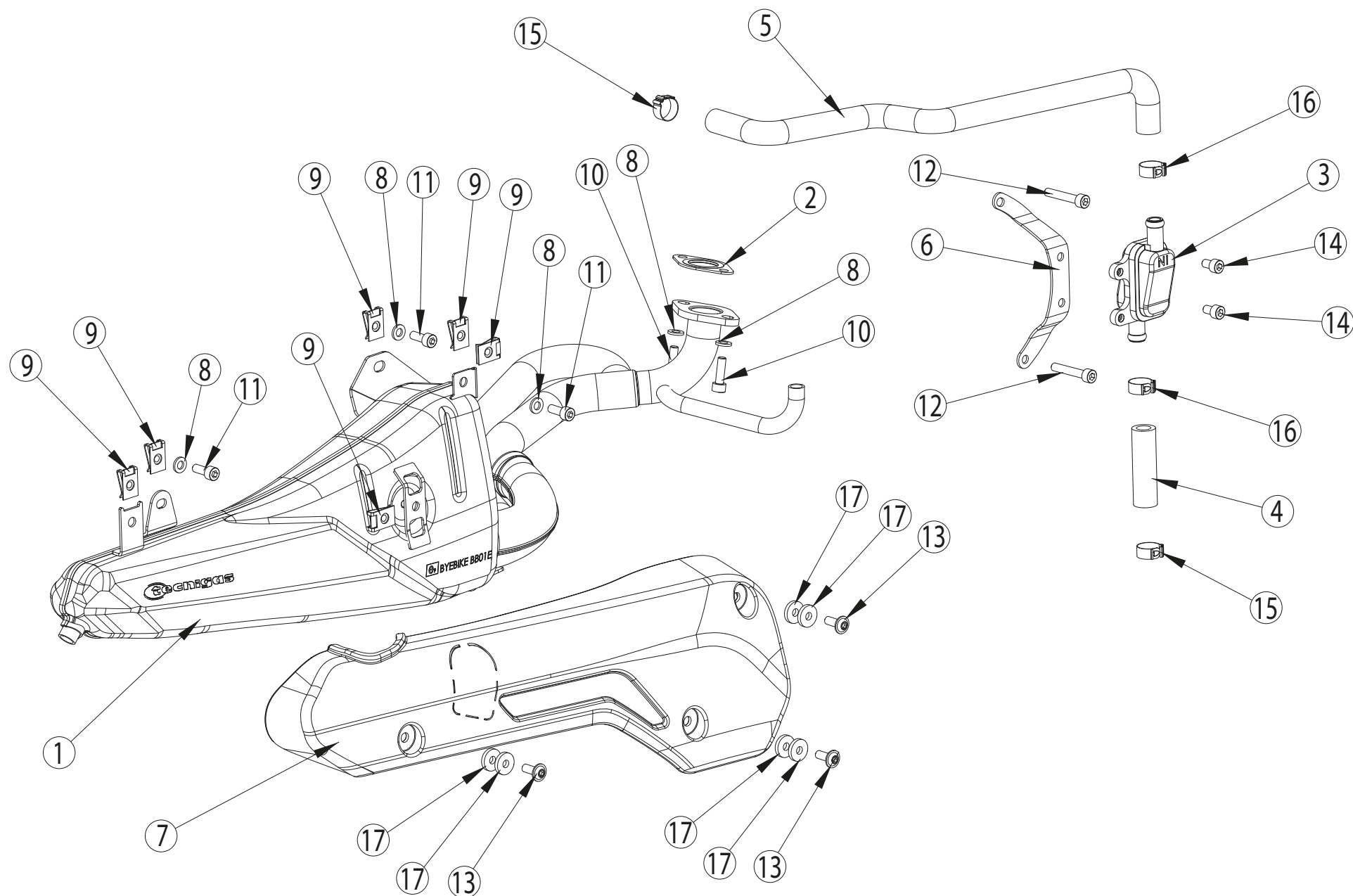




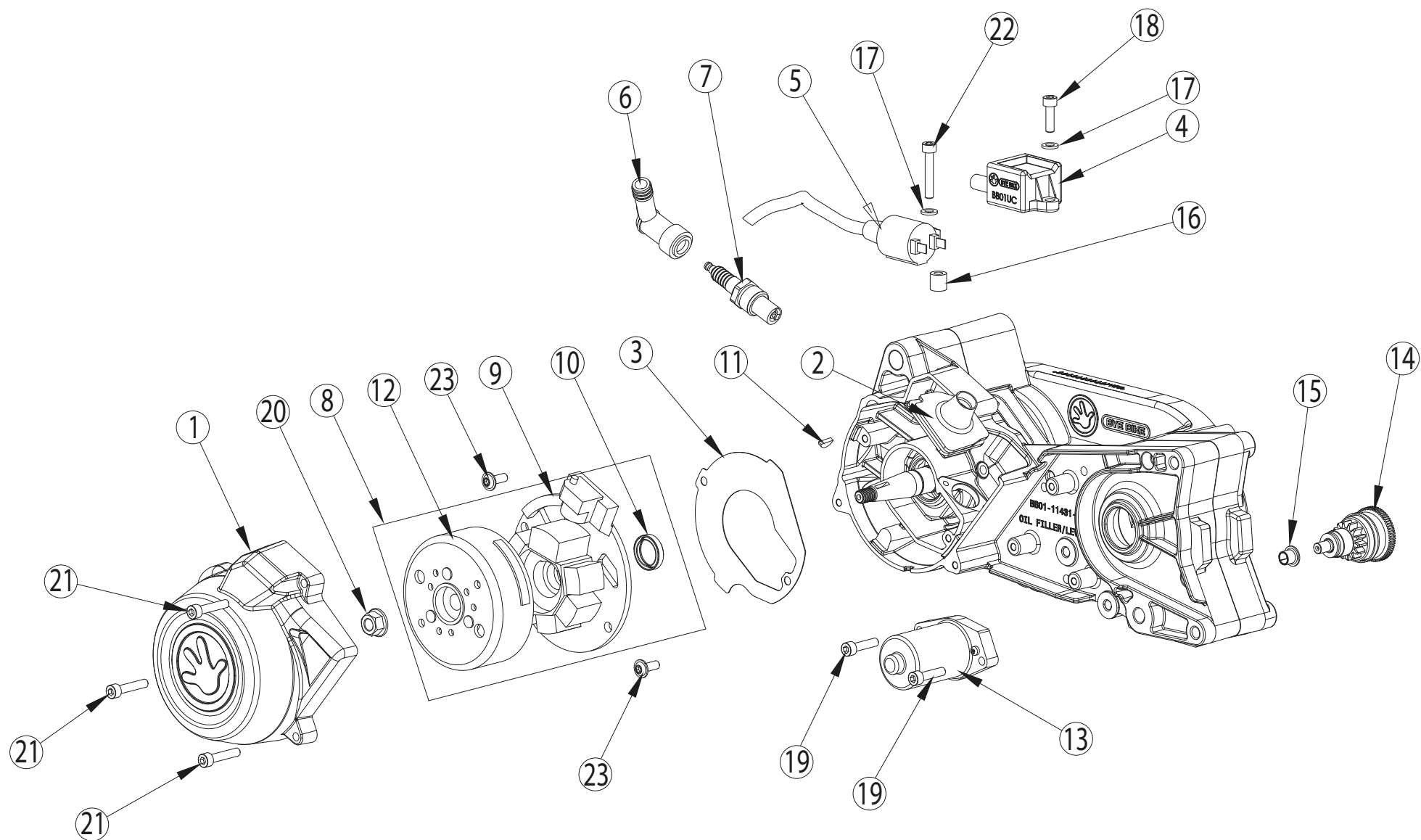
27



29

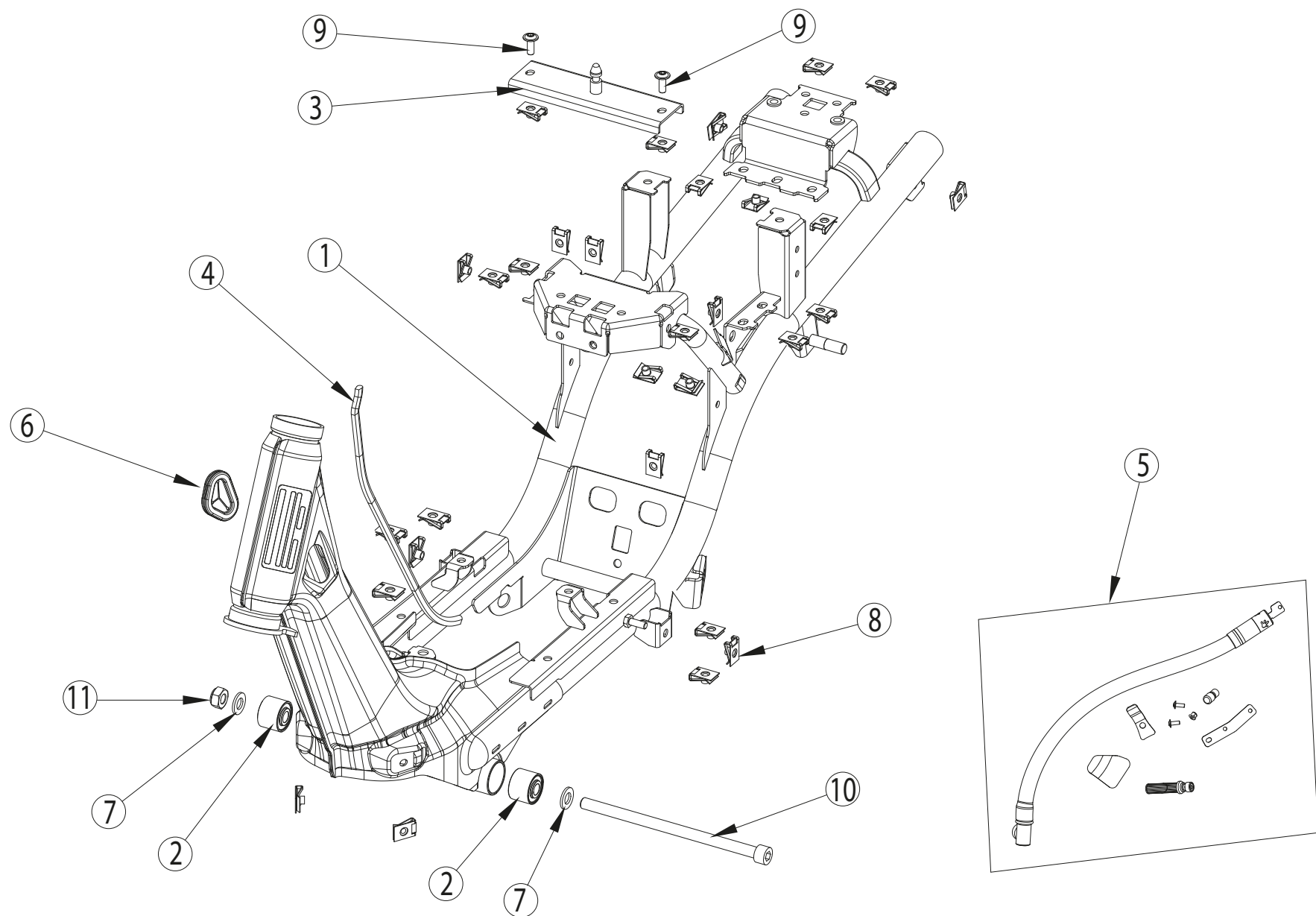


31





33

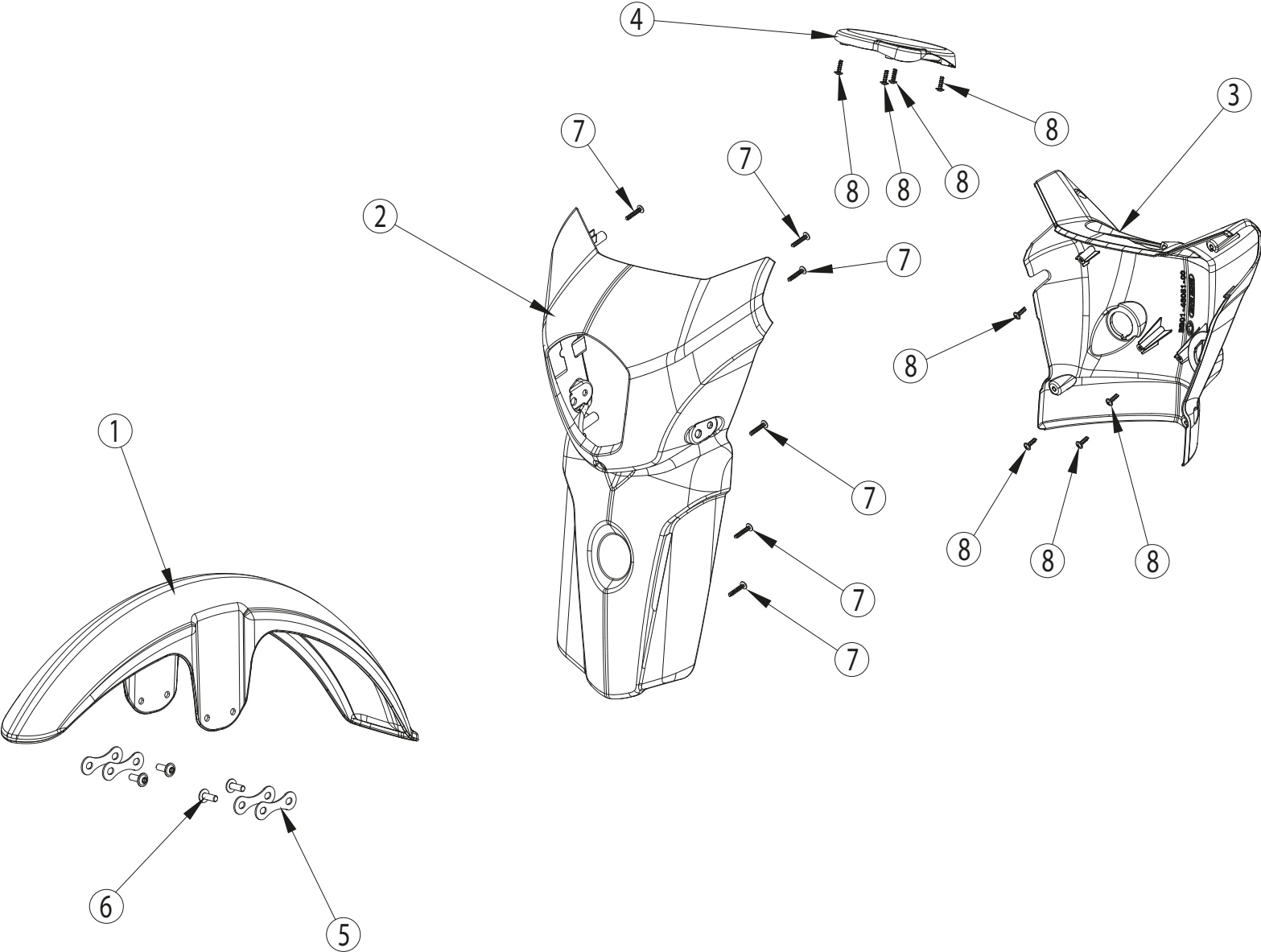




Nº	Ref.	Descripción / Description	Qty.
1	BB01-41010-00-810	Cjto. bastidor / Frame assy. *	1
2	BB01-41718-00-810	Silentblock motor / Silentblock engine	2
3	BB01-41790-00-810	Cjto. puente sillin motor / Seat bracket	1
4	BB01-45655-00-810	Bordón embellecedor / Frame trim 335mm	1
5	BB01-49210-00-810	Cjto. antirobo / Anti-theft assy.	-
6	BB01-81081-00-810	Pasacables inst. electrica / Rubber grommet frame	1
7	00280012	Arandela / Washer M10 DIN 125 zinc (50 units/kit)	1
8	00280019	Tuerca rapida universal / Universal snap nut M6 (10 units/kit)	1
9	00280241	Tornillo ULS+ar / ULS+ar screw M6x16 ISO 7380-2 8.8 zinc (25 units/kit)	1
10	00280252	Tornillo allen / Allen screw M10x180 DIN 912 8.8 zinc (1 units/kit)	1
11	00280280	Tuerca autoblocante / Locknut M10 DIN 985 8 zinc (25 units/kit)	1

OBSERVACIONES / REMARKS

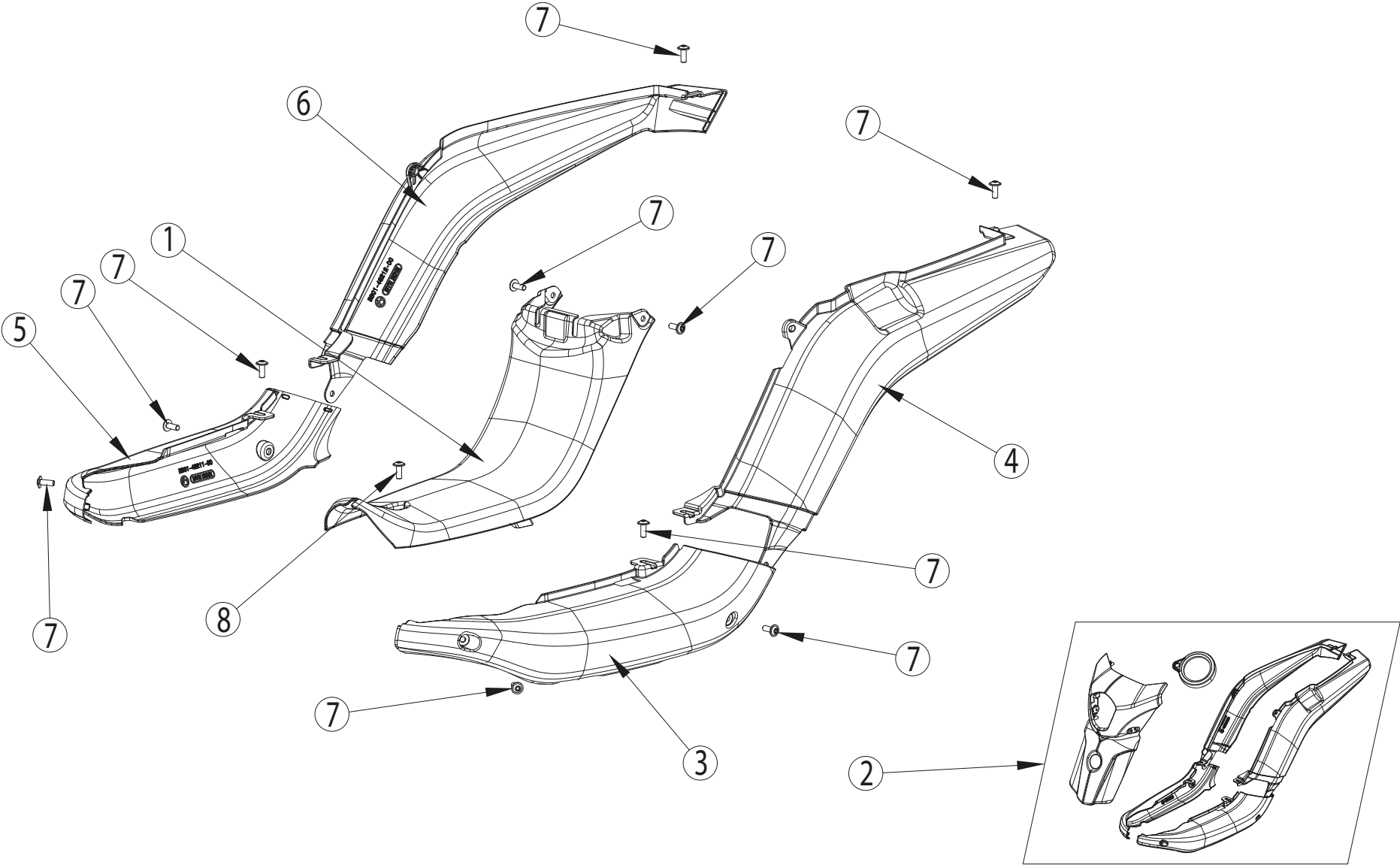
\* La pieza nº1 incluye pistas de dirección (x2), placa de fabricante, adhesivo antimanipulación, marcaje VIN, silent-blocks (x2) y tuercas remachables (x4).  
Part nº1 include steering bearing (x2), manufacture plate, antitampering stick, VIN mark, silent-blocks (x2) and ribet nut (x4).





Nº	Ref.	Descripción / Description	Qty.
1	BB01-46011-00-810	Guardabarros delantero / Front mudguard	1
2	BB01-46041-00-***	Tapa manillar delantera / Front handlebar cover * Seleccionar el código de color / Select the color code	1
3	BB01-46051-00-810	Tapa manillar trasera / Rear handlebar cover	1
4	BB01-46311-00-***	Embellecedor instr. / Dashboard trim ring * Seleccionar el código de color / Select the color code	1
5	BB01-46371-00-810	Pletina carroceria / Bodyguard bracket	4
6	00280241	Tornillo ULS+ar / ULS+ar screw M6x16 ISO 7380-2 8.8 zinc (25 units/kit)	1
7	00280243	Tornillo rosca plastico PH / PH plastic thread screw 4x20 (25 units/kit)	1
8	00280244	Tornillo rosca plastico PH / PH plastic thread screw 4x12 (25 units/kit)	1

PART REFERENCE - ***		
VIN Number	Color code	Color description
Until *UBJBB1101G0000286*	Part ref. - 800	Metallic midnight
Until *UBJBB1101G0000286*	Part ref. - 801	Deep titanium
Until *UBJBB1101G0000286*	Part ref. - 802	Pearl wihite
All	Part ref. - 803	Red PP
All	Part ref. - 804	White PP
From *UBJBB1101G0000286*	Part ref. - 806	Shiny black
From *UBJBB1101G0000286*	Part ref. - 807	Graphite
From *UBJBB1101G0000286*	Part ref. - 808	Frost white

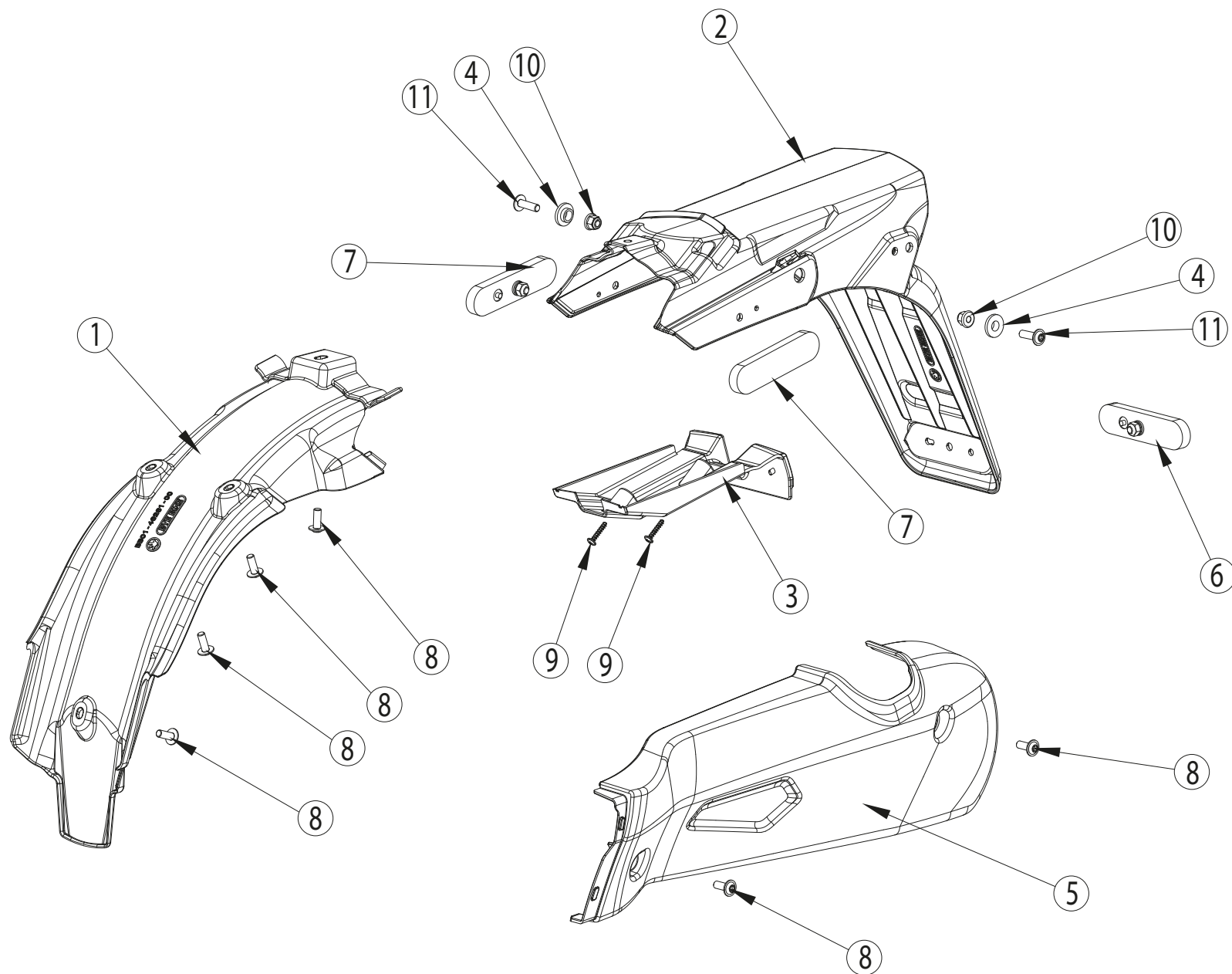




Nº	Ref.	Descripción / Description	Qty.
1	BB01-46171-00-810	Tapa central / Central cover	1
2	BB01-46190-00-***	Cjto. tapas carenado / Body cover set * Seleccionar el código de color / Select the color code	1
3	BB01-46201-00-***	Tapa lateral izq. delantera / Front left side cover * Seleccionar el código de color / Select the color code	1
4	BB01-46202-00-***	Tapa lateral izq. trasera / Rear left side cover * Seleccionar el código de color / Select the color code	1
5	BB01-46211-00-***	Tapa lateral drcha. delantera / Front right side cover * Seleccionar el código de color / Select the color code	1
6	BB01-46212-00-***	Tapa lateral drcha. trasera / Rear right side cover * Seleccionar el código de color / Select the color code	1
7	00280241	Tornillo ULS+ar / ULS+ar screw M6x16 ISO 7380-2 8.8 zinc (25 units/kit)	1
8	00280303	Tornillo ULS+ar / ULS+ar screw M6x12 ISO 7380-2 8.8 zinc (25 units/kit)	1

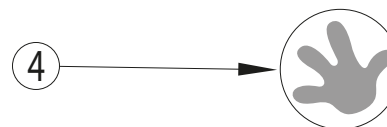
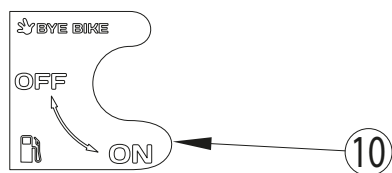
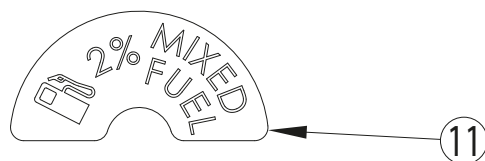
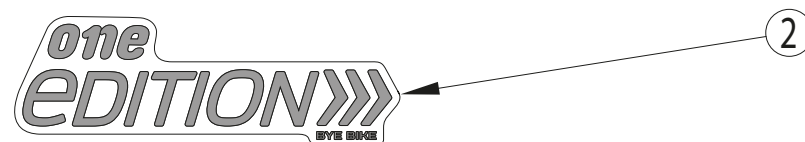
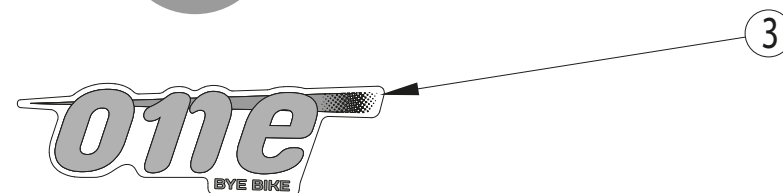
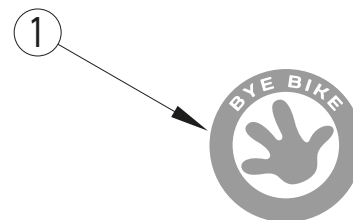
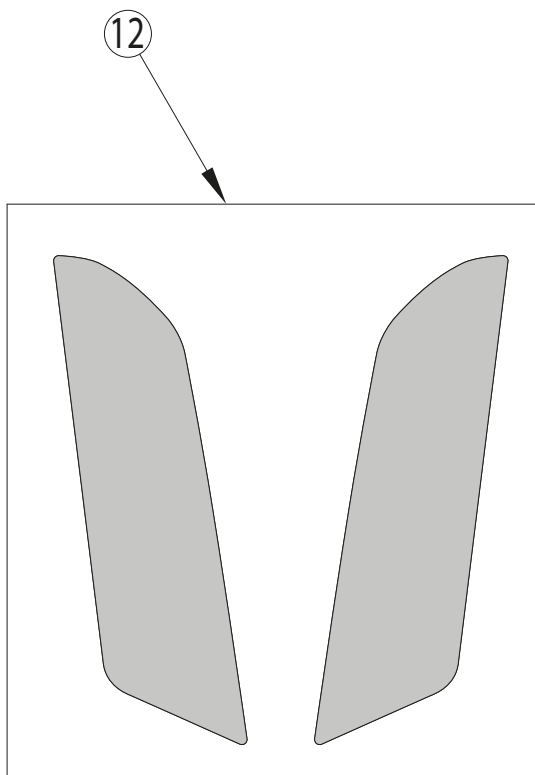
PART REFERENCE - \*\*\*

VIN Number	Color code	Color description
Until *UBJBB1101G0000286*	Part ref. - 800	Metallic midnight
Until *UBJBB1101G0000286*	Part ref. - 801	Deep titanium
Until *UBJBB1101G0000286*	Part ref. - 802	Pearl white
All	Part ref. - 803	Red PP
All	Part ref. - 804	White PP
From *UBJBB1101G0000286*	Part ref. - 806	Shiny black
From *UBJBB1101G0000286*	Part ref. - 807	Graphite
From *UBJBB1101G0000286*	Part ref. - 808	Frost white

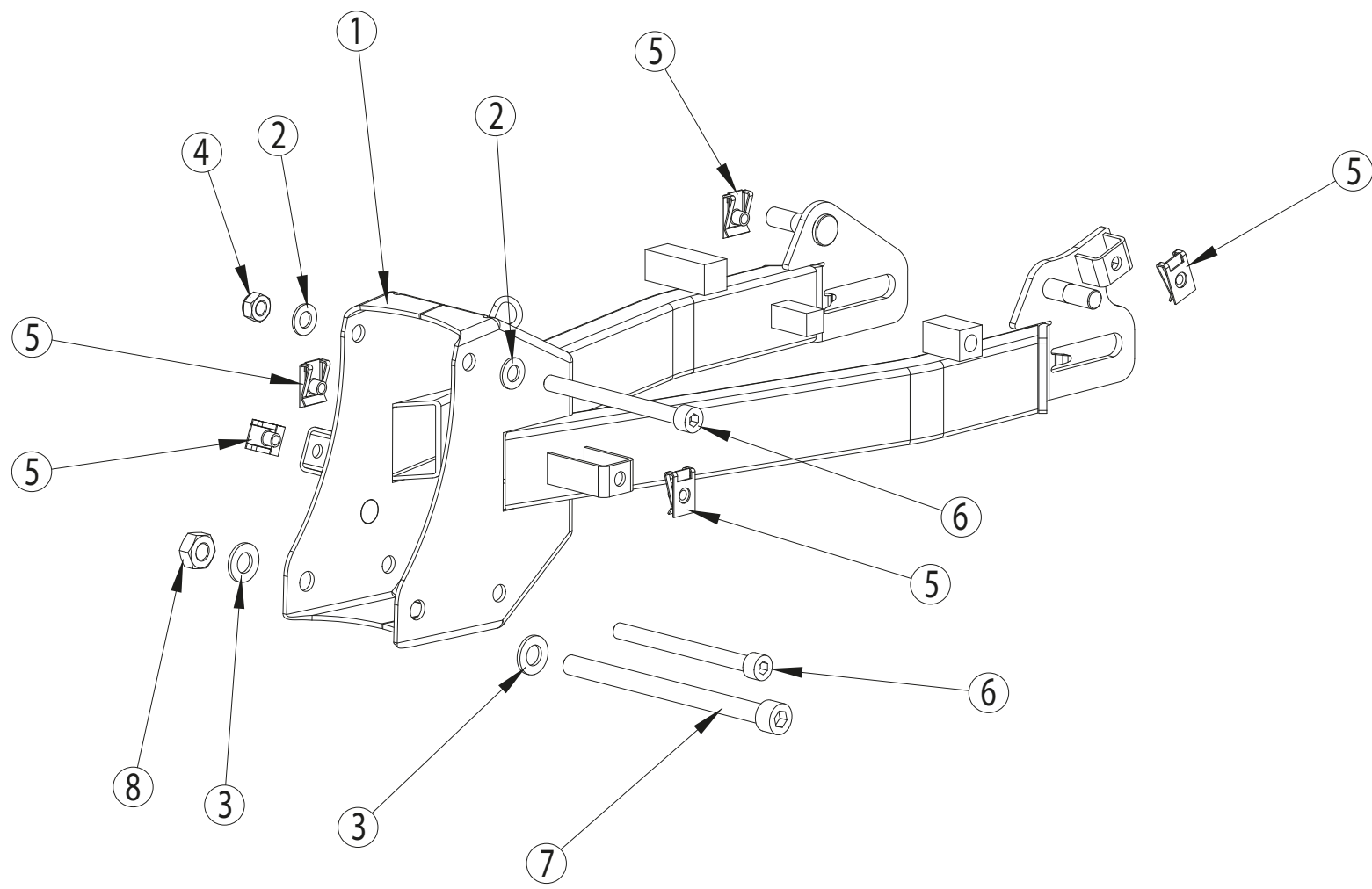




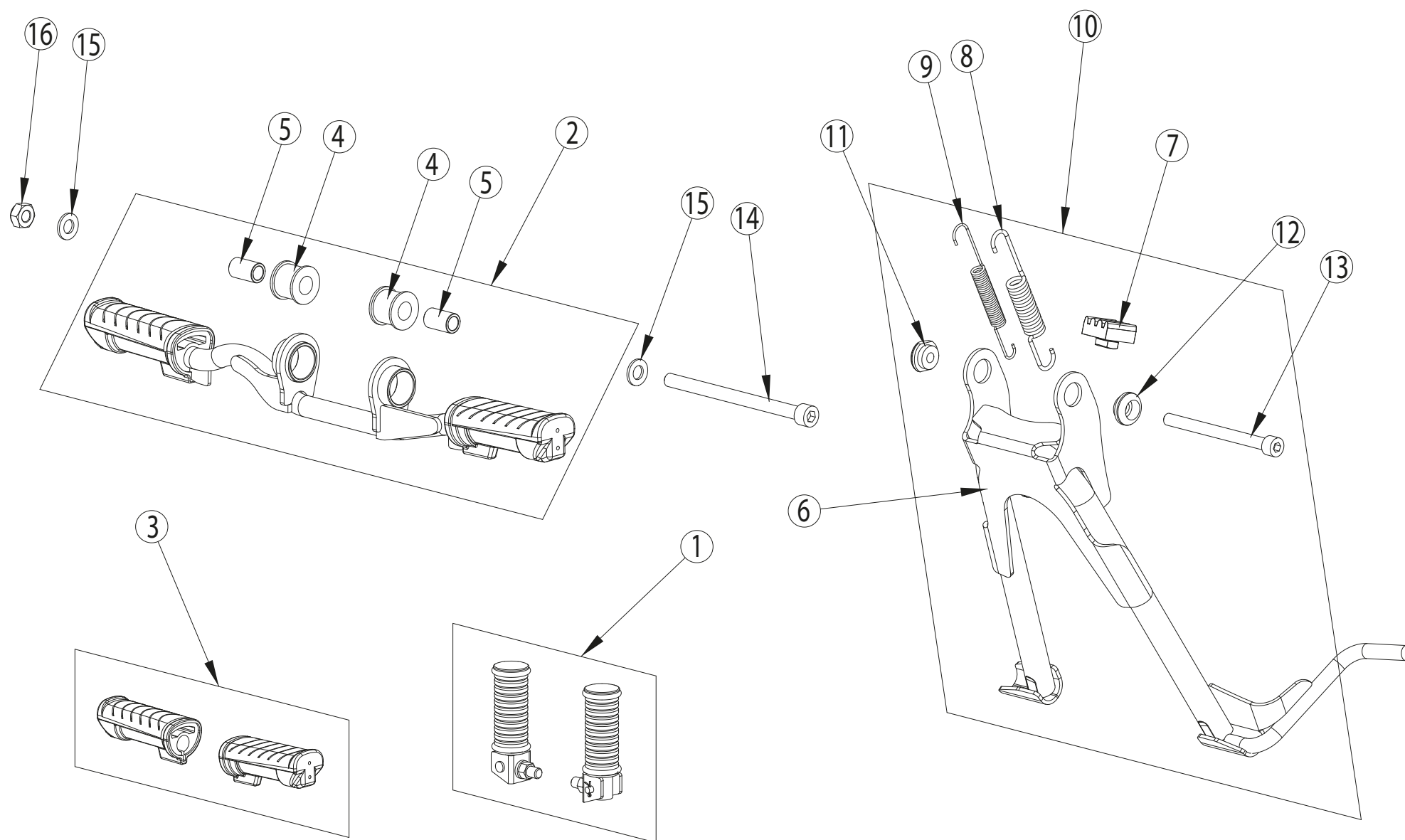
41



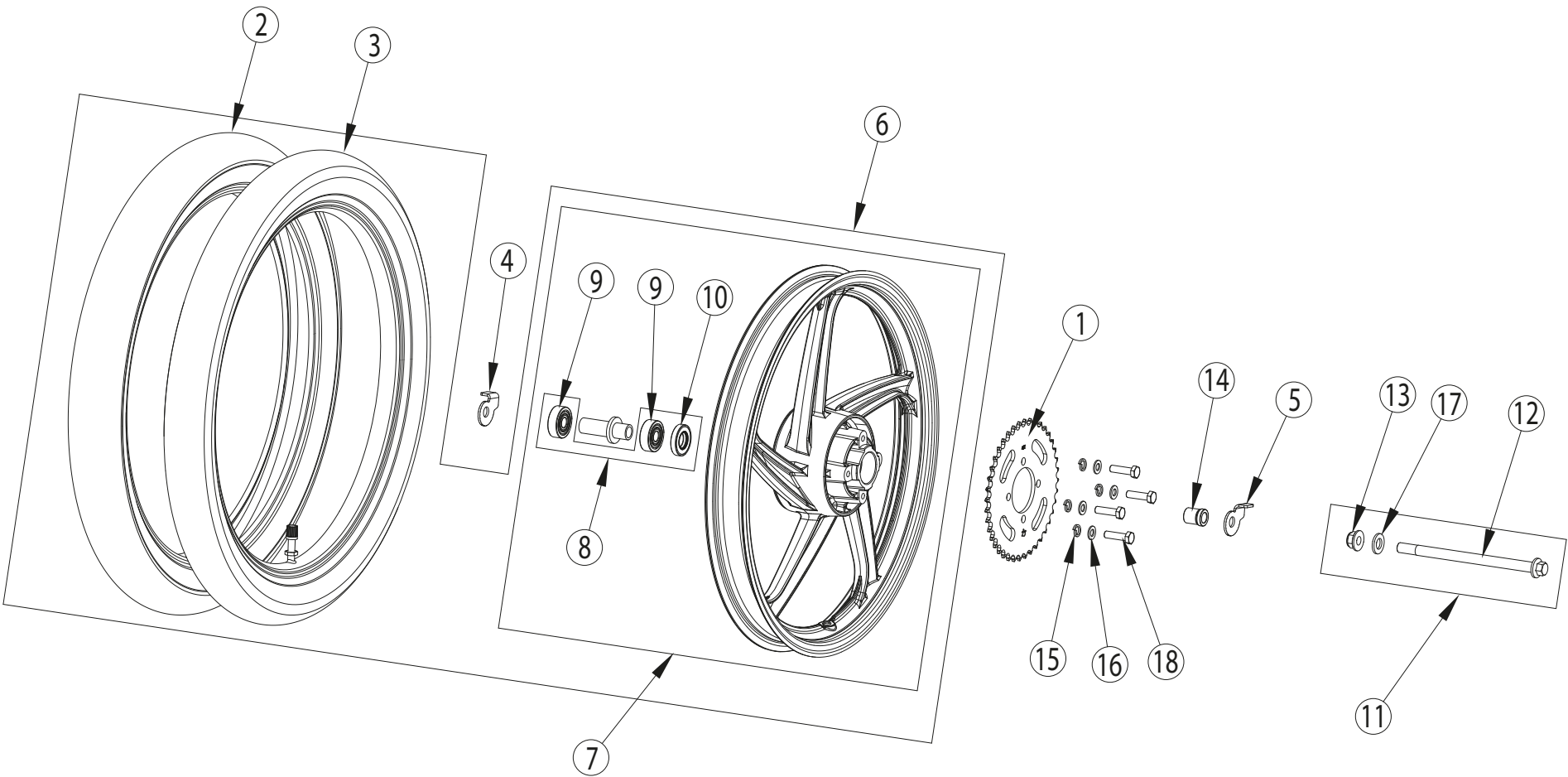




45

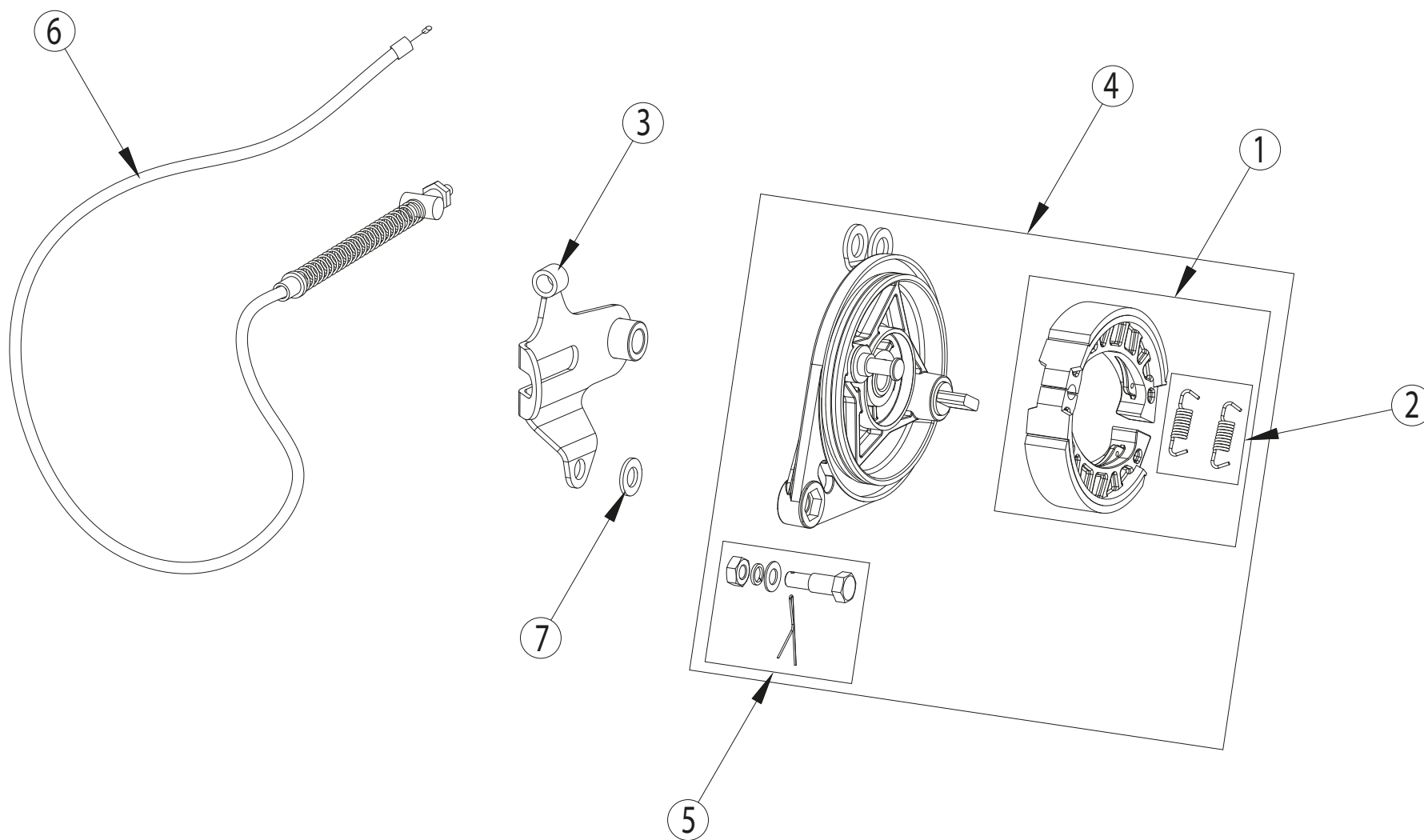




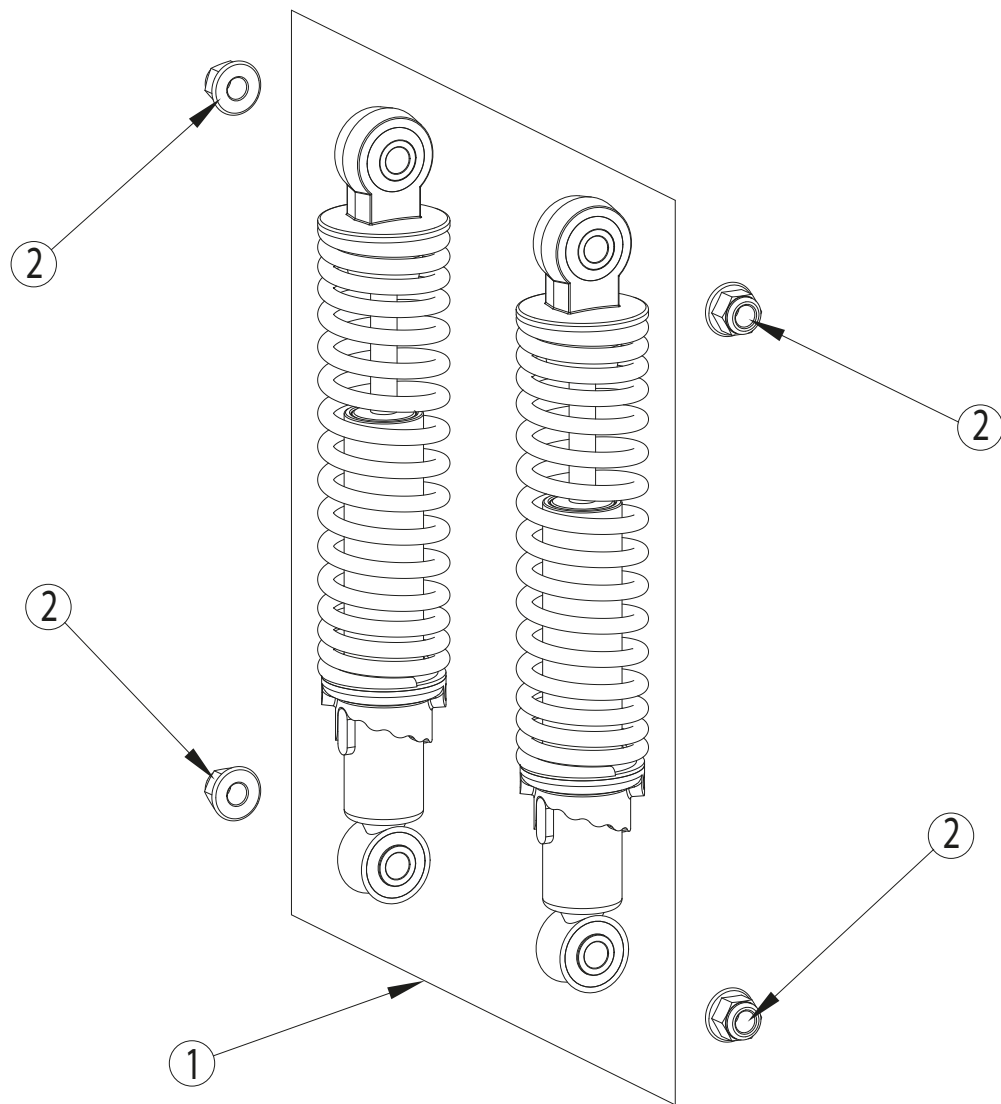




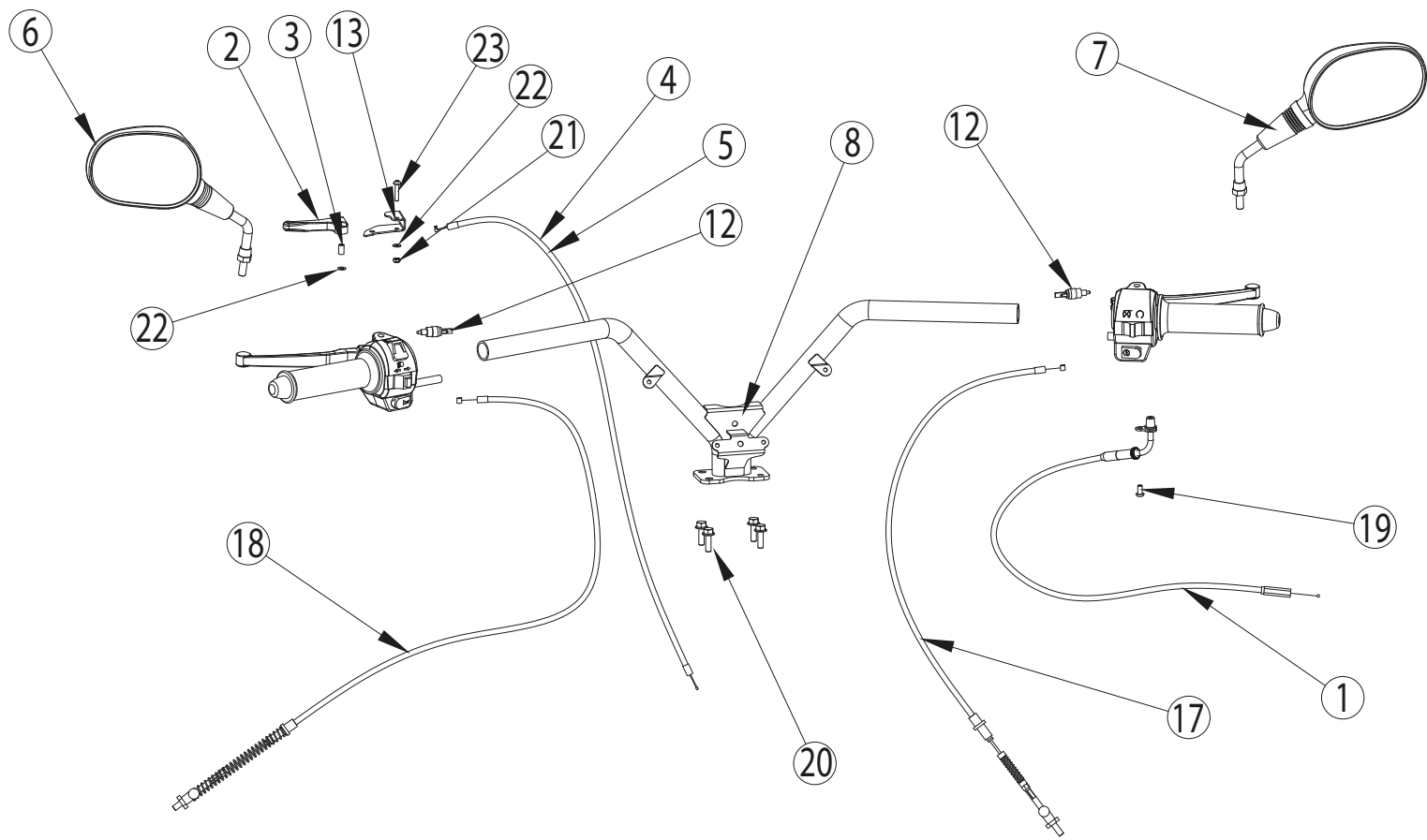
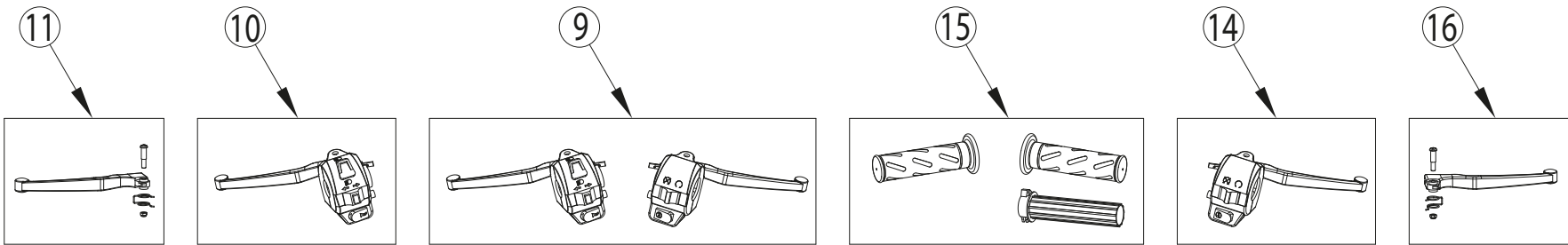
49



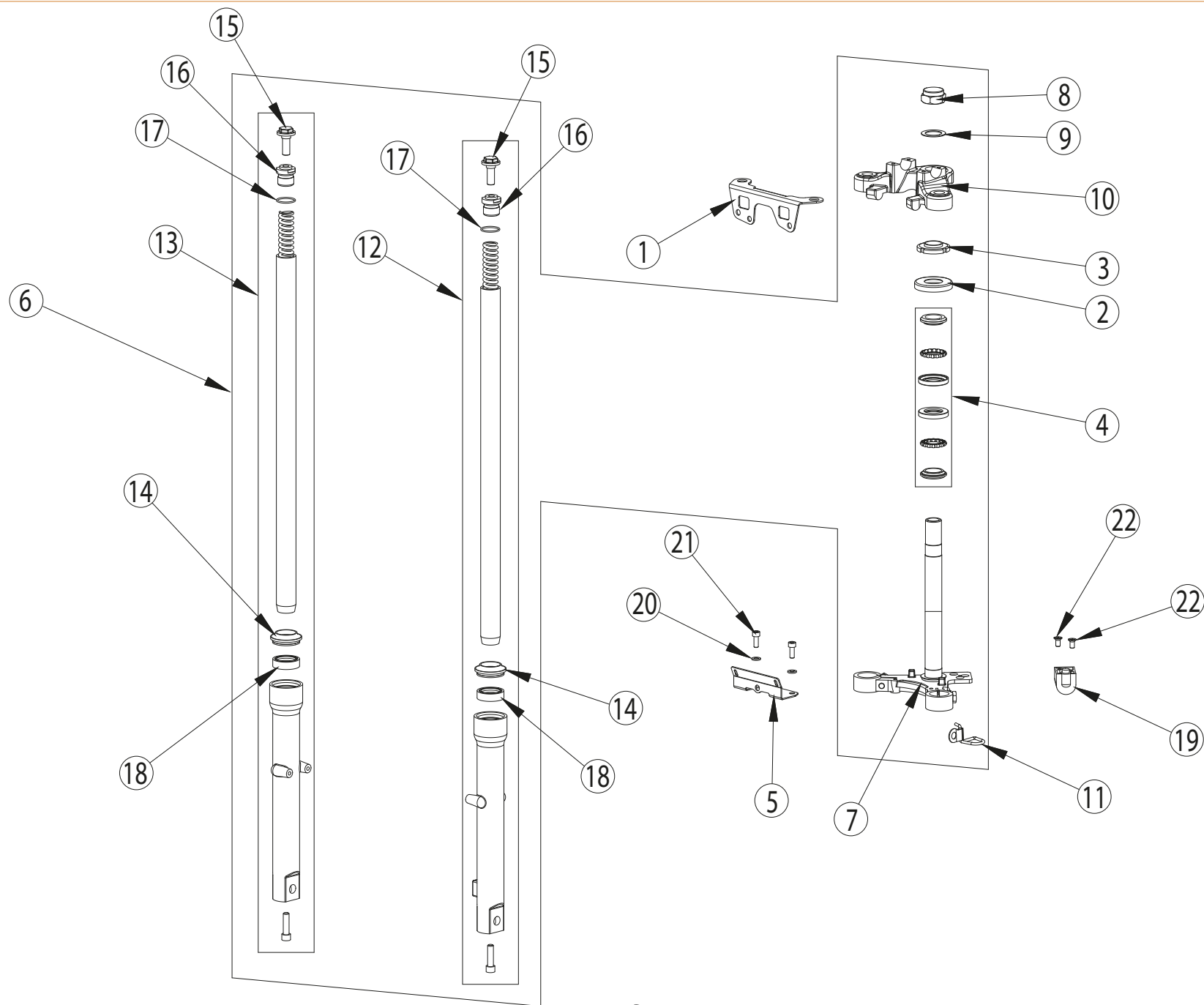
51



53



55



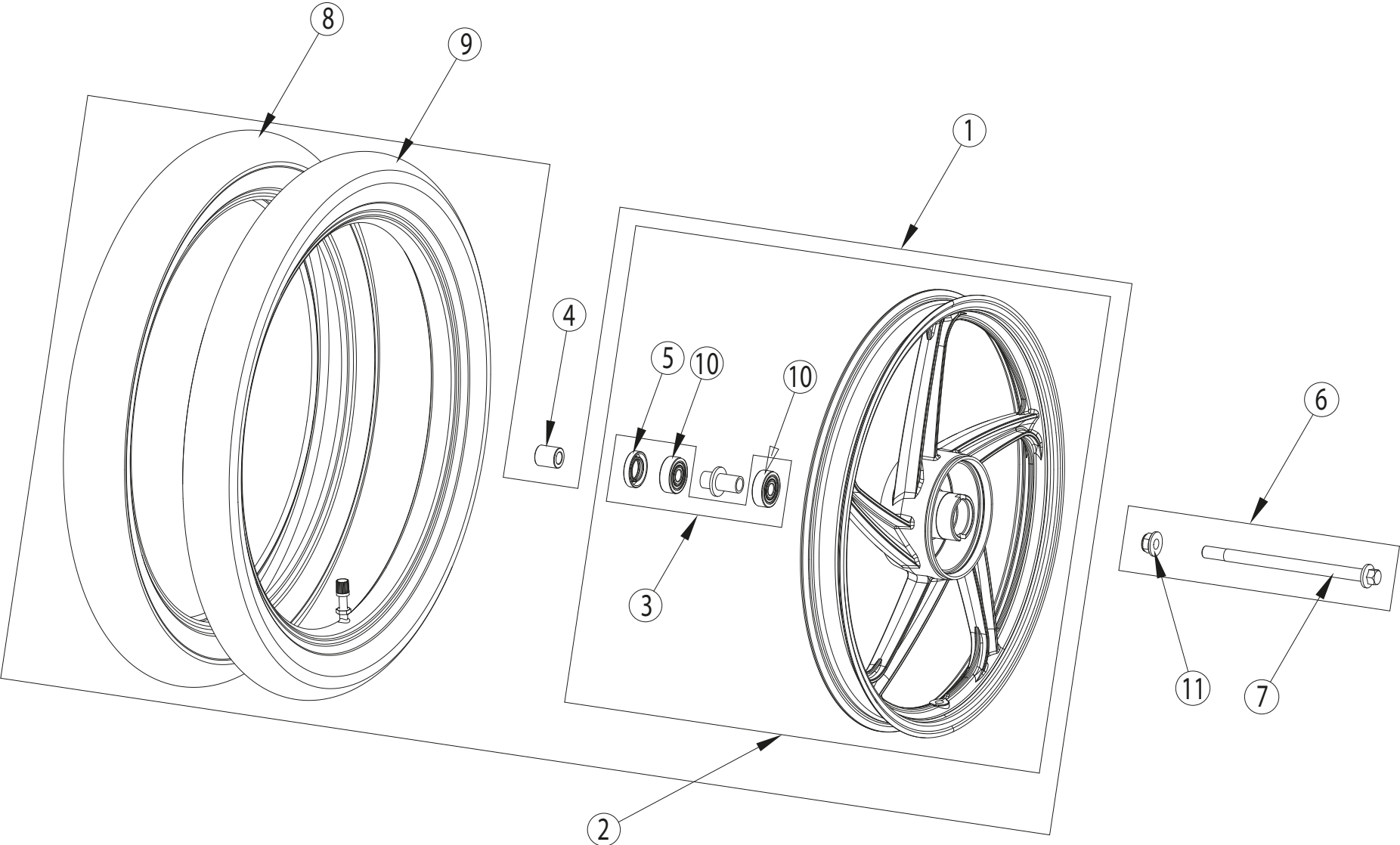




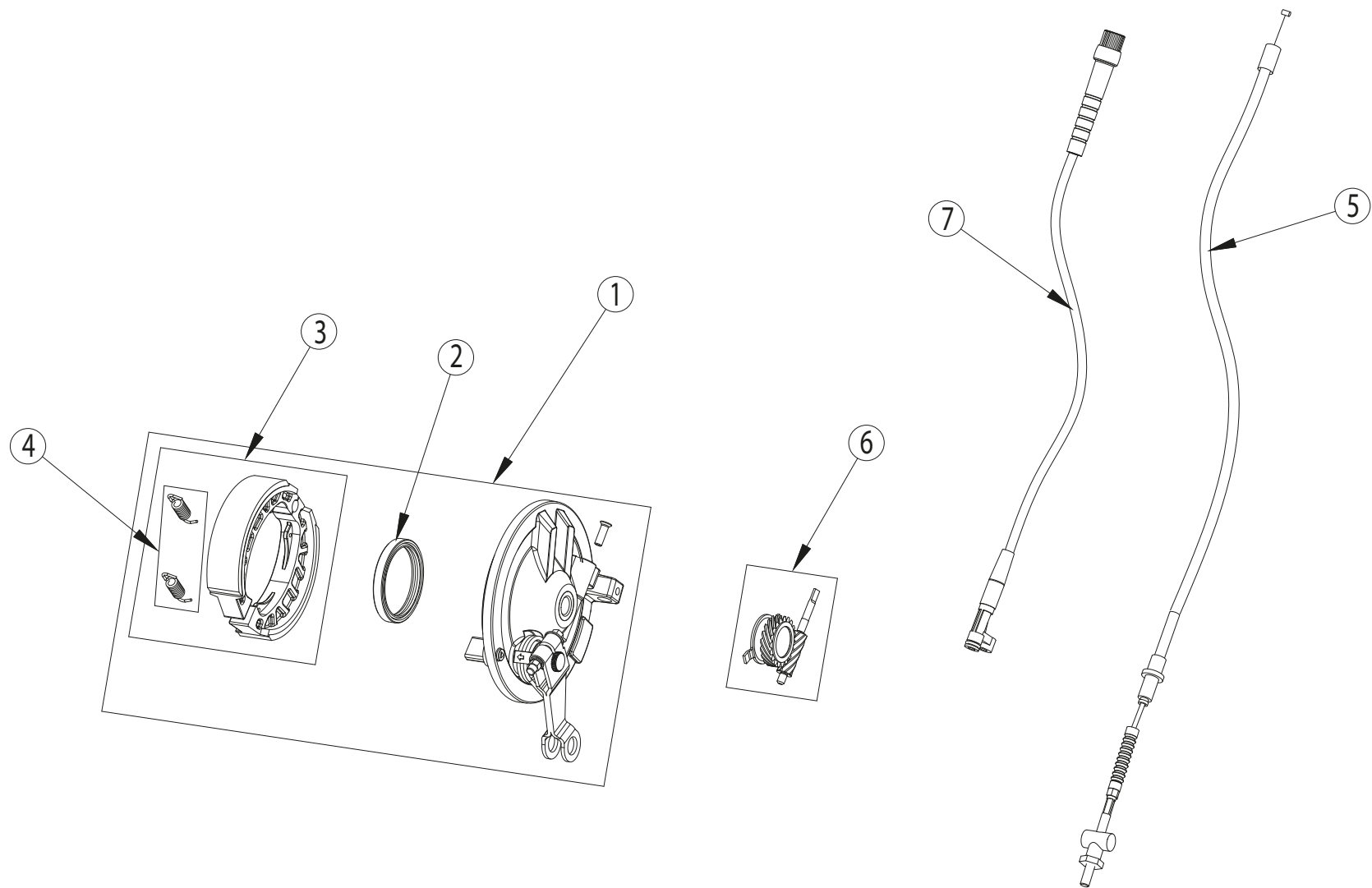
Nº	Ref.	Descripción / Description	Qty.
1	BB01-46661-00-810	Spte. cesta superior / Bodywork bracket	1
2	BB01-51084-00-810	Guardapolvo / Dust cover	1
3	BB01-51096-00-810	Tuerca direccion / Steering nut	1
4	BB01-51120-00-810	Cjto. rodamientos direccion / Steering bearings assy.	1
5	BB01-51281-00-810	Spte. careta frontal / Front body cover bracket	1
6	BB01-52010-00-810	Cjto. horquilla delantera Ø27 / Front fork assy.	1
7	BB01-52021-00-810	Pletina inferior / Lower bracket	1
8	BB01-52031-00-810	Tuerca pletina sup. / Upper bracket nut	1
9	BB01-52035-00-810	Arandela pletina sup. / Upper bracket washer	1
10	BB01-52051-00-810	Pletina superior / Upper bracket	1
11	BB01-52071-00-810	Guía cable freno delantero / Front wire guide bracket	1
12	BB01-52130-00-810	Cjto. barra izquierda / Left bar assy.	1
13	BB01-52230-00-810	Cjto. barra derecha / Right bar assy.	1
14	BB01-52338-00-810	Guardapolvo barra horquilla / Fork bar dust cover	2
15	BB01-52345-00-810	Tornillo fijación barra / Front bar fixing screw	2
16	BB01-52355-00-810	Tapon sup. barra horquilla / Front bar upper plug	2
17	BB01-52357-00-810	Tórica tapón barra horquilla / O-ring front bar plug	2
18	BB01-52368-00-810	Reten barra horquilla / Fork bar seal	2
19	BB01-84005-00-810	Kit interruptores encendido/bloqueo / Switch/Lock kit *	1
20	00280004	Arandela / Washer M6 DIN 125 zinc (50 units/kit)	1
21	00280070	Tornillo allen / Allen screw M6x16 DIN 912 8.8 zinc (50 units/kit)	1
22	00280306	Tornillo avellanado PH / Countersunk PH screw M6x12 DIN 965-H zinc (25 units/kit)	1

## OBSERVACIONES / REMARKS

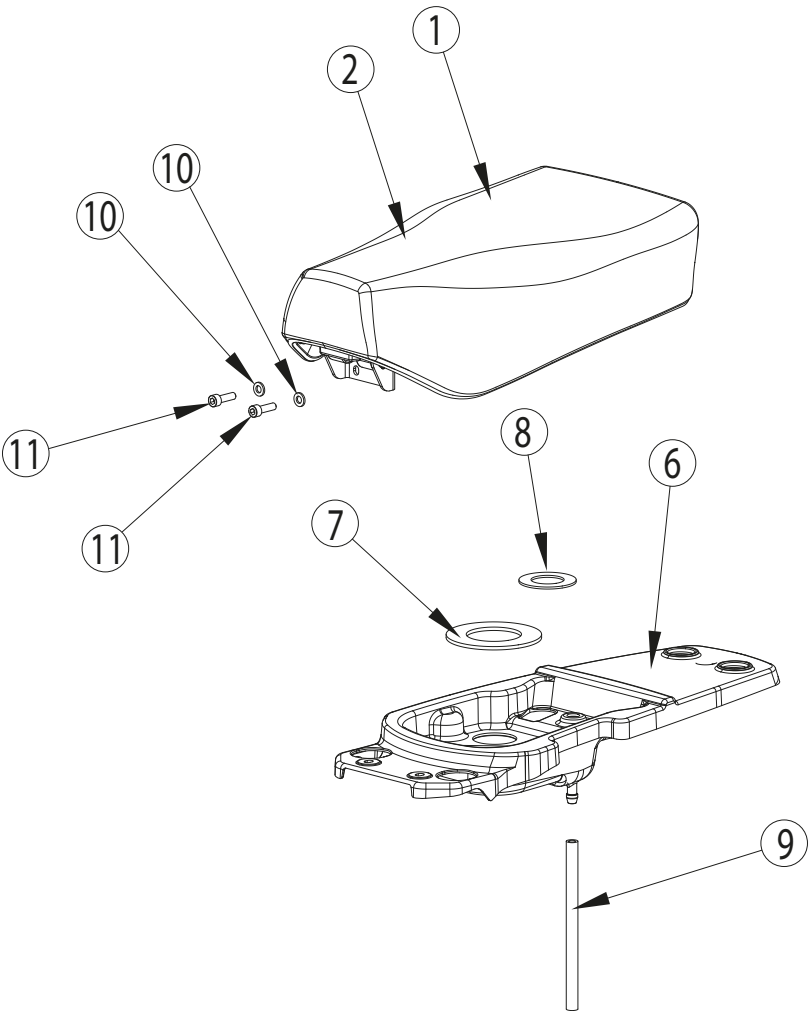
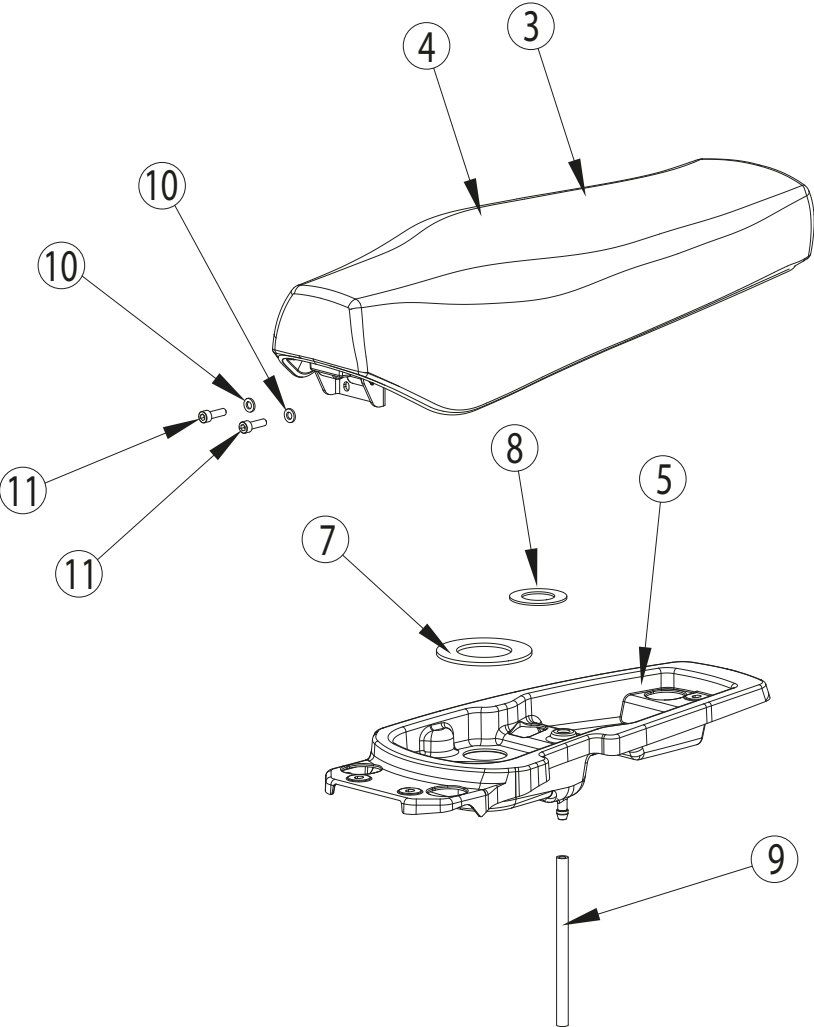
\* La pieza nº19 incluye el interruptor principal y el clausor horquilla delantera. / Part nº18 include main switch and front fork lock.



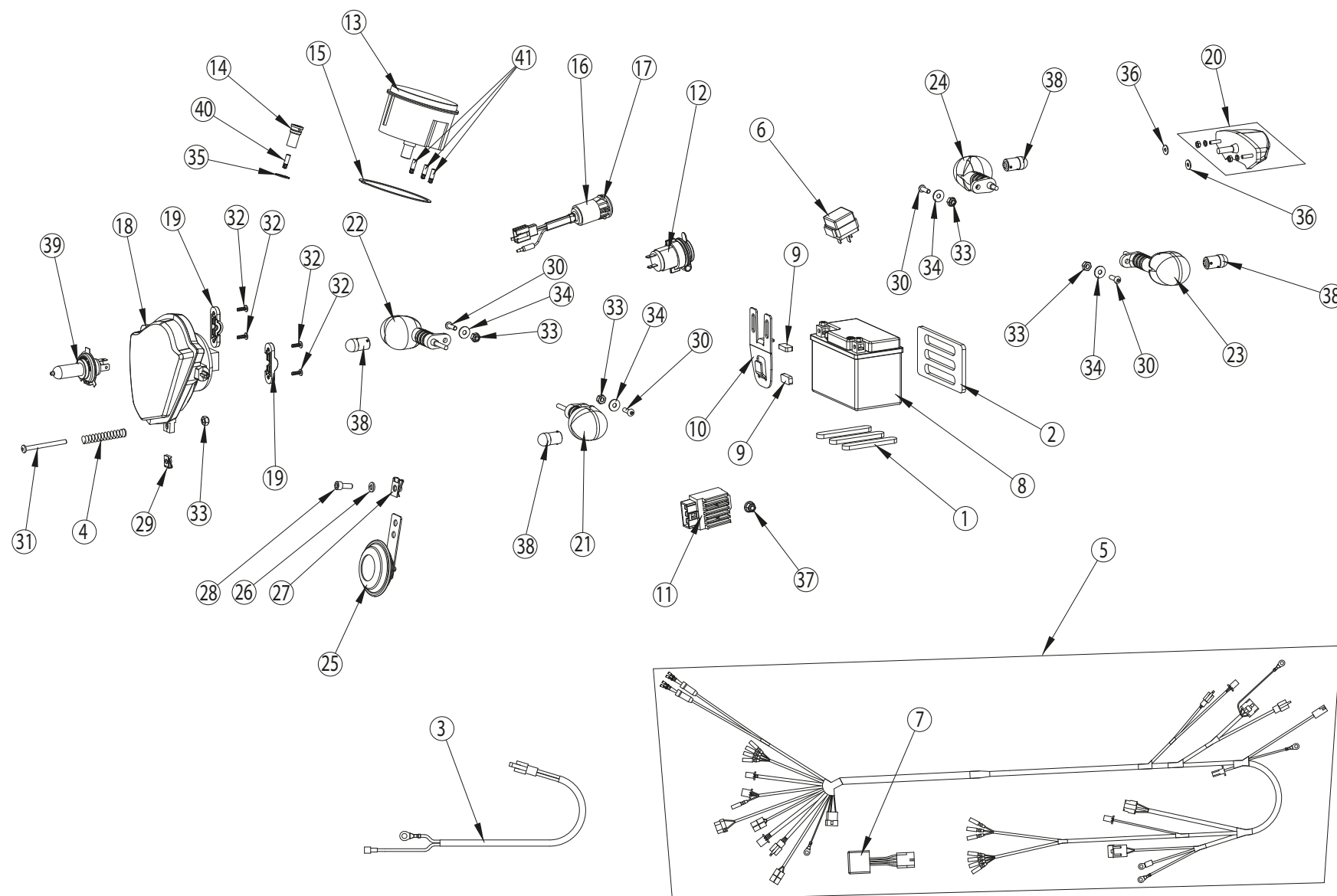
59



[illegible]



63



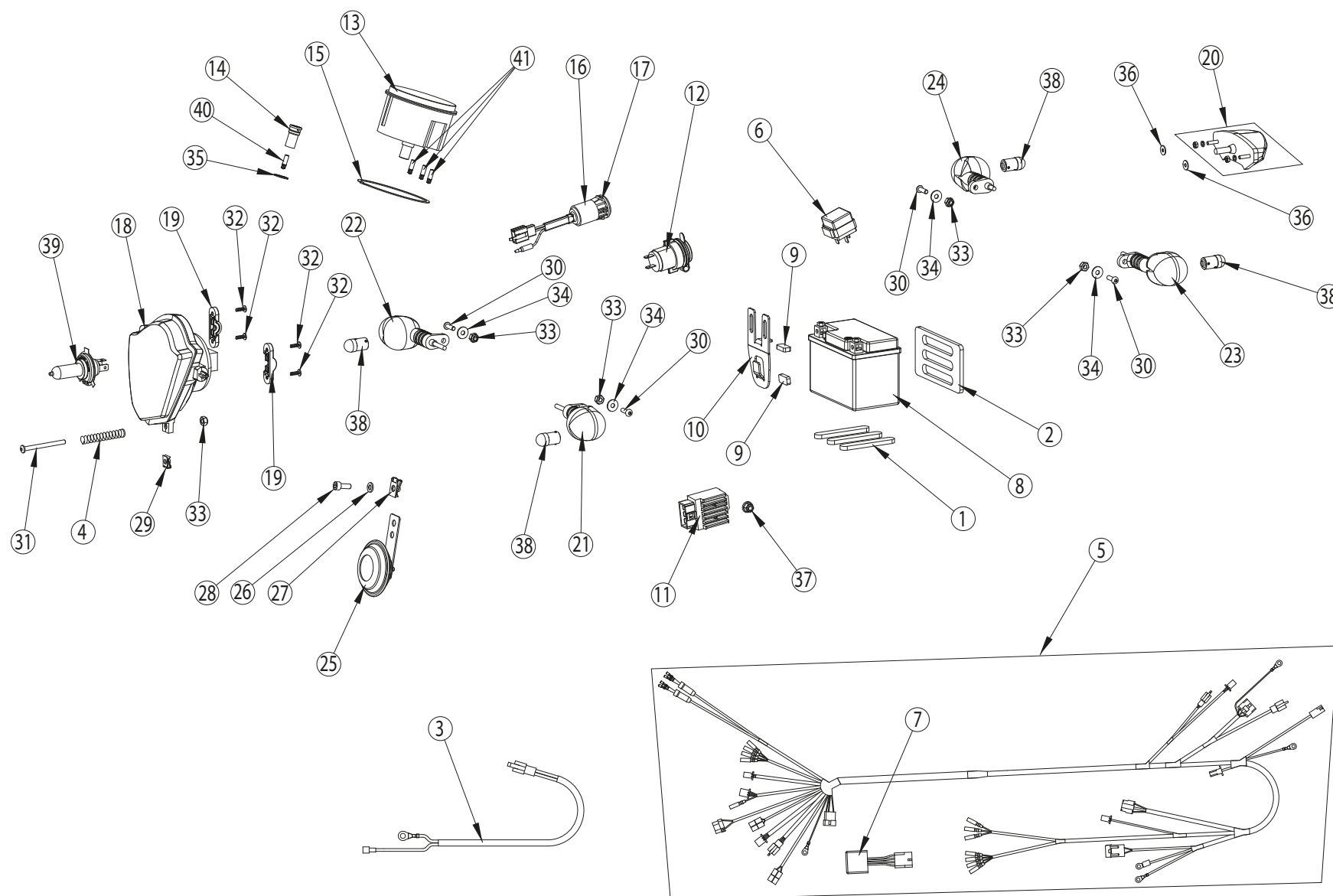




Nº	Ref.	Descripción / Description	Qty.
1	BB01-15086-00-810	Espuma batería inf. / Lower battery foam	3
2	BB01-15087-00-810	Espuma batería tras. / Rear battery foam	1
3	BB01-19330-00-810	Cables motor arranque / Starter motor cables	-
4	BB01-45195-00-810	Muelle retorno cierre sillín / Seat closure return spring	1
5	BB01-81010-00-810	Instalación eléctrica base / Basic electrical installation	1
6	BB01-81021-00-810	Rele motor de arranque / Starter motor relay	-
7	BB01-81025-00-810	Check testigo luces / Check lamp	1
8	BB01-82010-00-810	Batería / Battery CT4L-BS 12V 4Ah	-
9	BB01-82015-00-810	Espuma batería frontal / Front battery foam	-
10	BB01-82021-00-810	Brida sujeción batería / Battery bracket	-
11	BB01-82030-00-810	Regulador-rectificador / Regulator rectifier	1
12	BB01-82071-00-810	Toma corriente / Power output 12V	-
13	BB01-83020-00-810	Velocímetro / Speedometer Ø80 3 ind.	1
14	BB01-83025-00-810	Piloto azul luz larga / High beam blue indicator	1
15	BB01-83028-00-810	Junta velocímetro / Speedometer gasket	1
16	BB01-84005-00-810	Kit interruptores encendido/bolqueo / Switch/Lock kit *	1
17	BB01-84010-00-810	Interruptor principal / Main switch	1
18	BB01-85010-00-810	Faro delantero / Front lamp	1
19	BB01-85071-00-810	Soporte fijación faro delantero / Front lamp bracket	2
20	BB01-85150-00-810	Piloto trasero / Rear lamp	1
21	BB01-85210-00-810	Intermitente del. izq. / Front left turn light	-
22	BB01-85220-00-810	Intermitente del. drcho. / Front right turn light	-
23	BB01-85230-00-810	Intermitente tras. izq. / Rear left turn light	-
24	BB01-85240-00-810	Intermitente tras. drcho. / Rear right turn light	-
25	BB01-86010-00-810	Claxon / Horn	1

## OBSERVACIONES / REMARKS

\* La pieza nº16 incluye interruptor principal y el clausor horquilla delantera / Part nº16 include main switch and front fork lock.

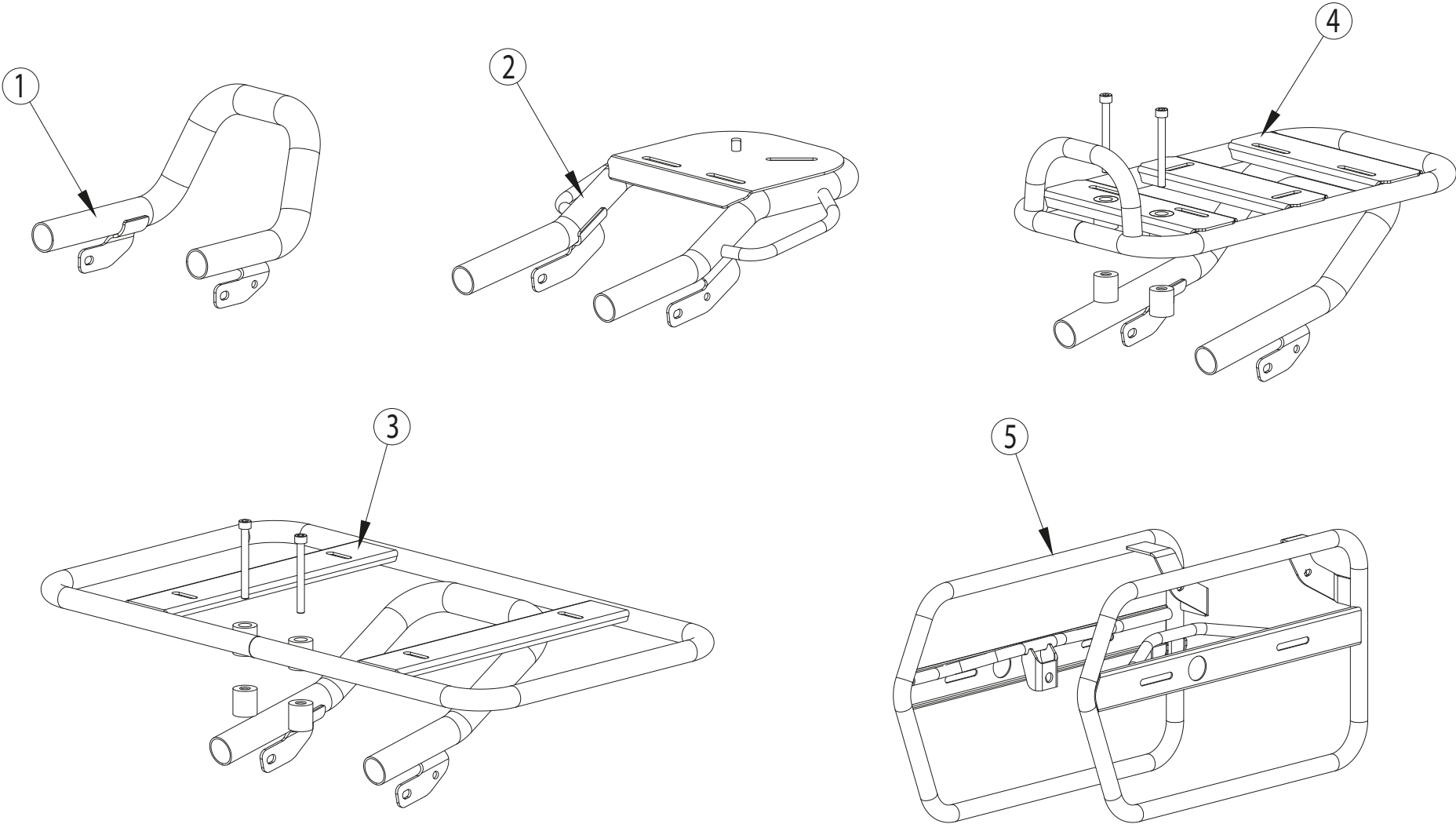




Nº	Ref.	Descripción / Description	Qty.
26	00280004	Arandela / Washer M6 DIN 125 zinc (50 units/kit)	1
27	00280019	Tuerca rapida universal / Universal snap nut M6 (10 units/kit)	1
28	00280070	Tornillo allen / Allen screw M6x16 DIN 912 8.8 zinc (50 units/kit)	1
29	00280110	Tuerca rapida universal / Universal snap nut M5 (10 units/kit)	1
30	00280226	Tornillo ULS / ULS screw M5x20 ISO 7380 10.9 zinc (50 units/kit)	1
31	00280242	Tornillo ULS / ULS screw M5x60 ISO 7380 8.8 zinc (10 units/kit)	1
32	00280244	Tornillo rosca plastico PH / PH plastic thread screw 4x12 E0209 (25 units/kit)	1
33	00280245	Tuerca autoblocante / Locknut M5 DIN 985 8 zinc (50 units/kit)	1
34	00280246	Arandela ancha / Wide washer M5 DIN 9021 zinc (10 units/kit)	1
35	00280257	Circlip Ø14 DIN 471 (25 units/kit)	1
36	00280273	Arandela ancha / Wide washer M4 DIN 9021 zinc (50 units/kit)	1
37	00280278	Tuerca autoblocante / Locknut M6 DIN 6926 8 zinc (25 units/kit)	1
38	EL00001	Bombilla piloto / Turn light bulb 12V 10W R10W	1
39	EL00002	Bombilla / Front light bulb 12V 30/35W HS1	1
40	EL00003	Bombilla / Tachometer light bulb 1,2W W2x4,6D	1
41	EL00004	Bombilla / Tachometer light bulb 2W W2x4,6D	1

## OBSERVACIONES / REMARKS

\* La pieza nº15 incluye el interruptor principal y el clausor horquilla delantera. / Part nº15 include main switch and front fork lock.







## **BYE BIKE**

TECNIGAS PARTS S.L.

Pol. Pla de la Font, Parc. 1.

E-17832, Crespia. SPAIN.

Tel. (+34) 972 570 988

Fax (+34) 972 570 950

[www.byebike.com](http://www.byebike.com)

[info@byebike.com](mailto:info@byebike.com)